

QUICK REFERENCE GUIDE

1. Login and Logout

! CAUTION

We recommend to use **Google Chrome, Mozilla Firefox or Microsoft Edge** latest version to access the ViewZ web management system. **To run the full function of ViewZ web management system, you should run the browser as administrator.** The detailed method is described at page 10 of IPPVM's web user manual.

Login



Step 1 Open the web browser. Enter the IP address of the PVM IP camera (default value: 192.168.0.120) in the address box and then press Enter. The login page is displayed, as shown in Figure 1-1.

Figure 1-1 Login Page

Factory Default IP address : 192.168.0.120
Factory Default Subnet Mask : 255.255.255.0
Factory Default Gateway : 192.168.0.1
Factory Default DNS 1 : 192.168.0.1
Factory Default DNS 2 : 192.168.0.2

Caution: IP address and gateway address should be set with the same IP parameters. For example, if IP address is "A.B.C.0 ~ 255", then gateway address should be set as "A.B.C.0 ~ 255" (however, IP and gateway address cannot be the same.)



Step 2 Enter the user name, and password




Note

- The default user name is **admin** and the default password is **admin**. Change the password when you log in to the system for the first time to ensure system security.
- You can change the system display language on the login page.



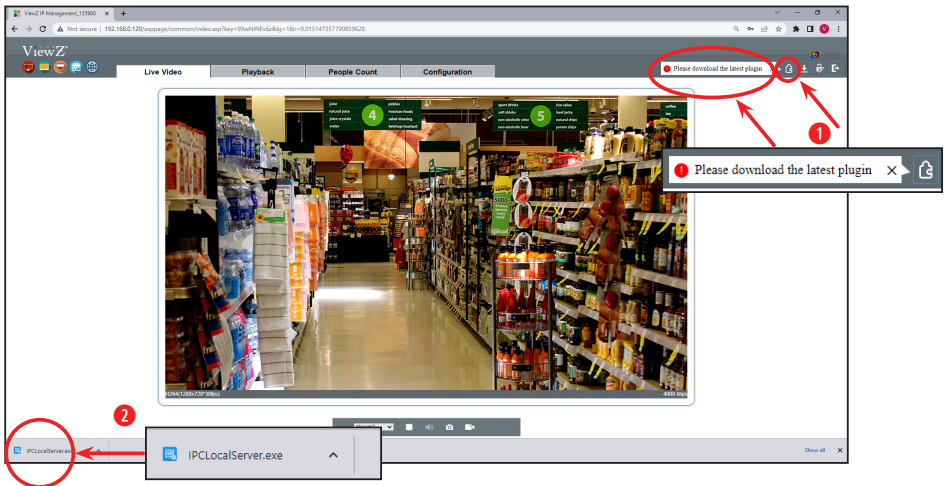
Step 3 Click Login. The main page will be displayed.

Logout


To log out of the system, click the icon  in the upper right corner of the main page. The login page is displayed after you log out of the system.

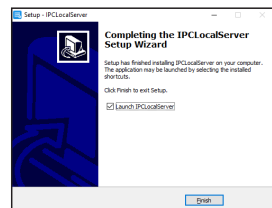
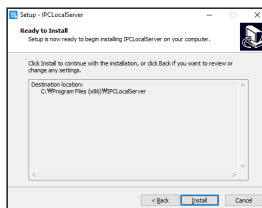
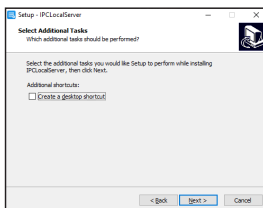
QUICK REFERENCE GUIDE

1. Login and Logout



Step 4 When you log in, you now see the main page. Before using this software, you need to install a plugin program which named '**IPCLocalServer**' to use '**Playback**' function correctly.

- 1) Click the  icon to download a plugin
- 2) Double click the left bottom tab to run '**IPCLocalServer.exe**' plugin program
- 3) After the installation of '**IPCLocalServer.exe**' plugin program, you can now use '**Playback**' function



QUICK REFERENCE GUIDE

2. Main Page Layout

On the main page, you can see real-time video, receive alarm and fault notifications, set parameters, change the password, and log out of the system. Figure 1-2 shows the main page layout. Table 1-1 describes the features on the main page.

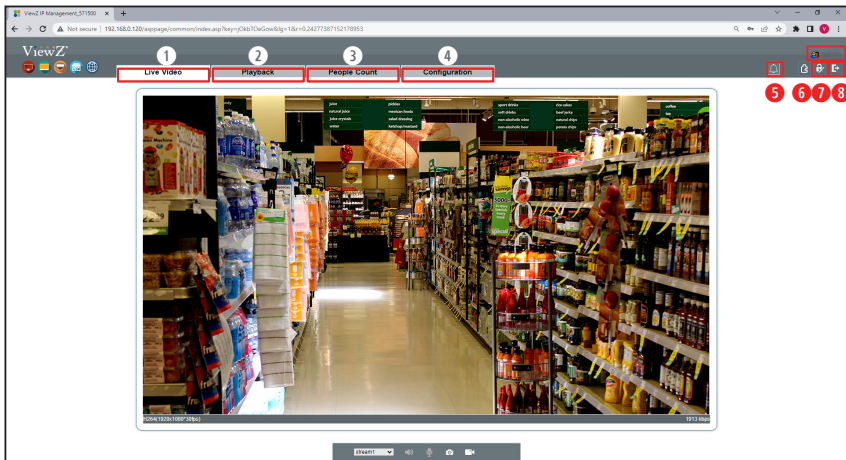







Figure 1-2 Main Page Layout

Table 1-1 Interface parameters

No.	ELEMENT	DESCRIPTION
1	LIVE VIDEO	Real-time video stream is displayed in this area. You can also set sensor parameters.
2	CONFIGURATION	You can select options to set device configuration, including the device information, audio and video streams, alarm setting, and privacy mask function.
3	PLAYBACK	You can select options to play recorded video by using Micro SD card (MAX 256GB).
4	PEOPLE COUNT	You can select options to count the number of people - in & out.
5	ALARM	When the device generates an alarm, the alarm icon  is displayed. You can click  to view the alarm information. NOTE : When the device accepts an alarm signal, the alarm icon will display within 10s in the web management system.
6	CHANGE PASSWORD	You can click  to download 'IPCLocalServer' program.
7	CHANGE PASSWORD	You can click  to change the password.
8	LOG OUT	You can click  to return to the login page.
9	ACCOUNT INFO.	Logged in user account will be displayed.

QUICK REFERENCE GUIDE

2. Main Page Layout

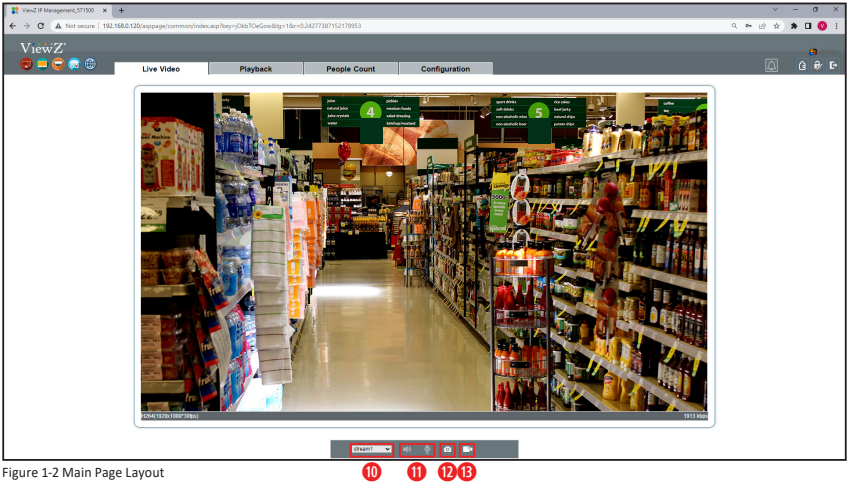


Figure 1-2 Main Page Layout

Table 1-1 Interface parameters

No.	ELEMENT	DESCRIPTION
10	STREAM	You can select options to show the stream of camera.
11	MIC / AUDIO	Not working
12	SCREEN SHOT	You can click this icon to take a screenshot of live video.
13	LOCAL RECORD	You can click this icon to record the live video.