



IP-PVMZ®

F/W update manual

(Firmware Version-v3.5.0804.1003.147.0.27.13.12)

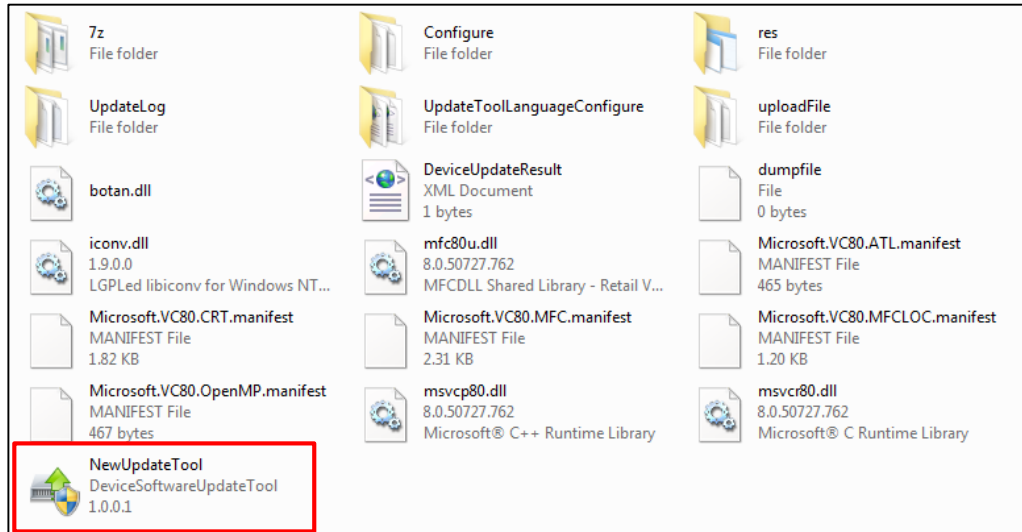
Version 1.8

ViewZ

<http://www.viewzusa.com>

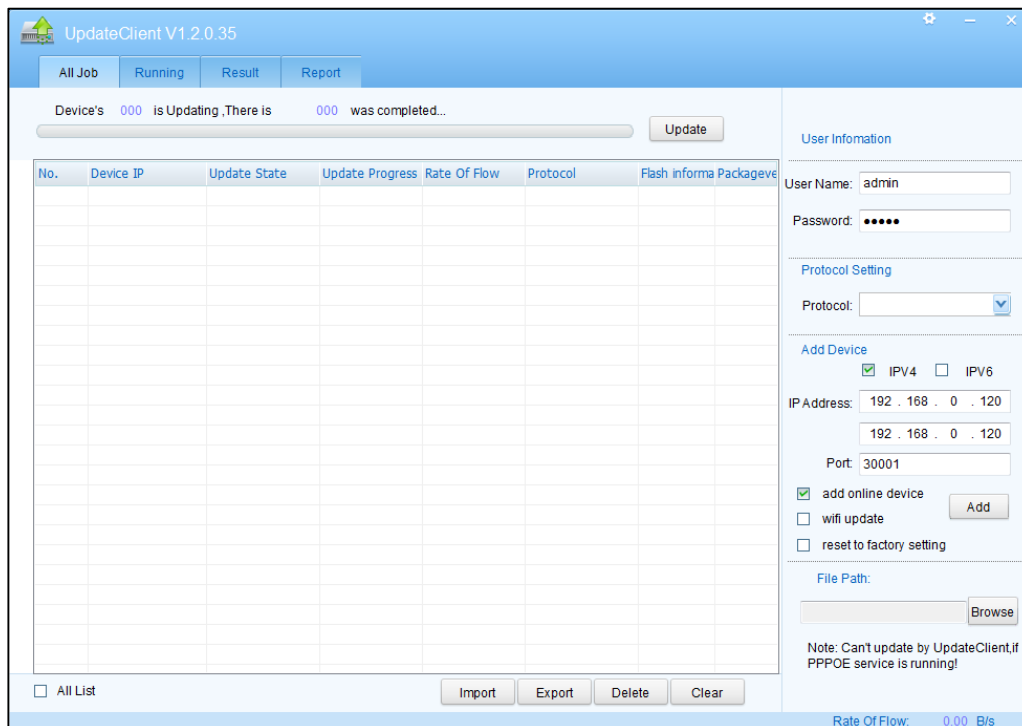
1. Connect

Connect the computer in LAN (Same local Network: PC & IP PVM), and double click "**NewUpdateTool**" to execute the program.

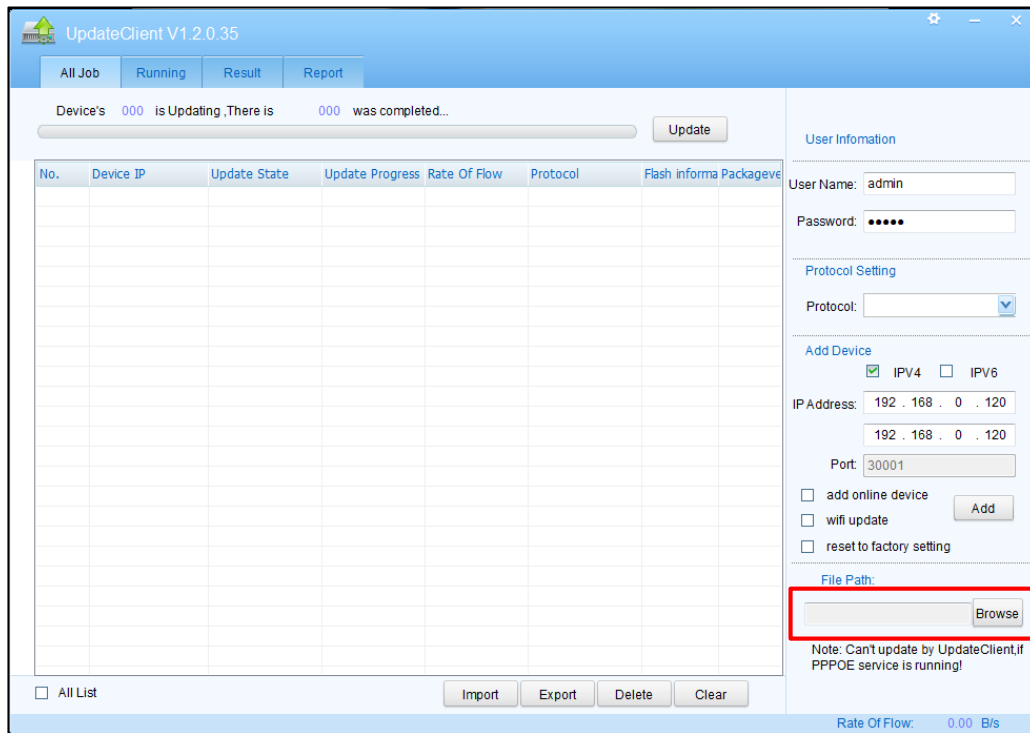


2. Software Interface

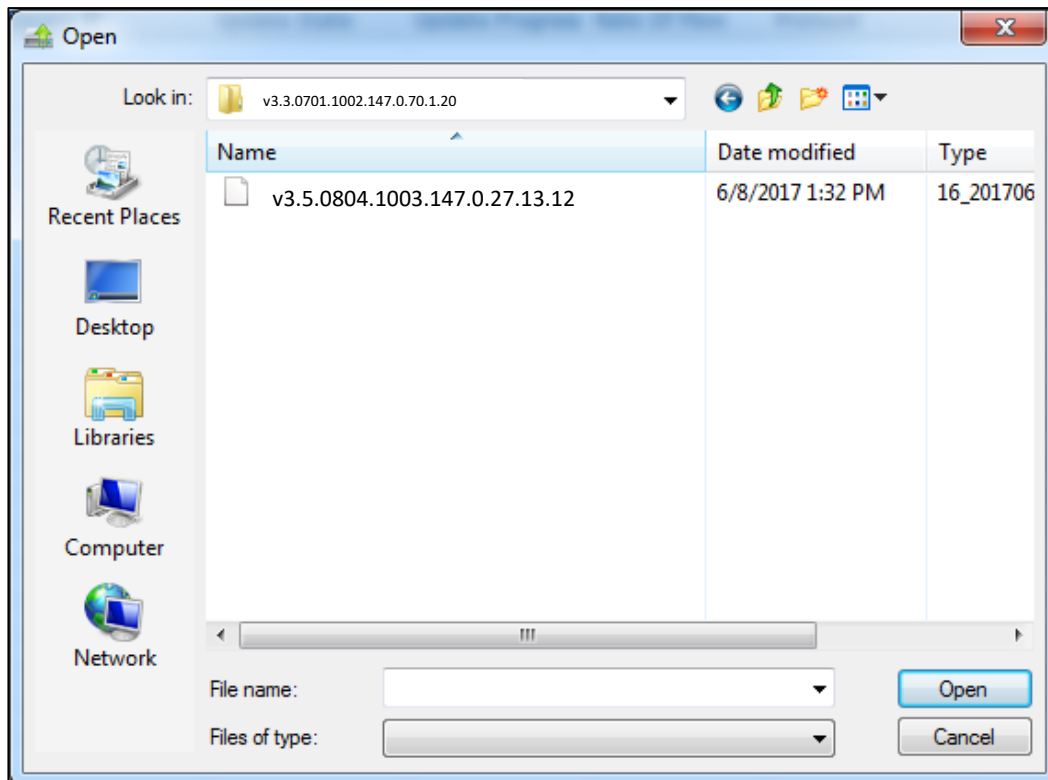
Software interface shown below will appear.



3. Open Firmware – Click “Browse”



Select folder that contains updated f/w file.



4. Add Device

UpdateClient V1.2.0.35

All Job Running Result Report

Device's 000 is Updating ,There is 000 was completed...

Update

No.	Device IP	Update State	Update Progress	Rate Of Flow	Protocol	Flash informa	Packageve
1	192.168.0.122	connect success	0%	0.00 KB/s	onvif2.4	107 MB	v3.3.070

☐ All List

Import Export Delete Clear

Rate Of Flow: 0.00 B/s

User Information

User Name: admin

Password:

Protocol Setting

Protocol: [dropdown]

Add Device

☒ IPV4 ☐ IPV6

IP Address: 192 . 168 . 0 . 122

192 . 168 . 0 . 122

Port: 30001

☐ add online device

☐ wifi update

☐ reset to factory setting

Add

File Path:

Browse

Note: Can't update by UpdateClient, if PPPOE service is running!

- User Name : admin
- Password : admin
- Put the IP address of IP PVM
- Click "Add" button

5. Connected Device

UpdateClient V1.2.0.35

All Job Running Result Report

Device's 000 is Updating ,There is 000 was completed...

Update

No.	Device IP	Update State	Update Progress	Rate Of Flow	Protocol	Flash informa	Packageve
1	192.168.0.122	connect success	0%	0.00 KB/s	onvif2.4	107 MB	v3.3.070

☐ All List

Import Export Delete Clear

Rate Of Flow: 0.00 B/s

User Information

User Name: admin

Password:

Protocol Setting

Protocol: [dropdown]

Add Device

☒ IPV4 ☐ IPV6

IP Address: 192 . 168 . 0 . 122

192 . 168 . 0 . 122

Port: 30001

☐ add online device

☐ wifi update

☐ reset to factory setting

Add

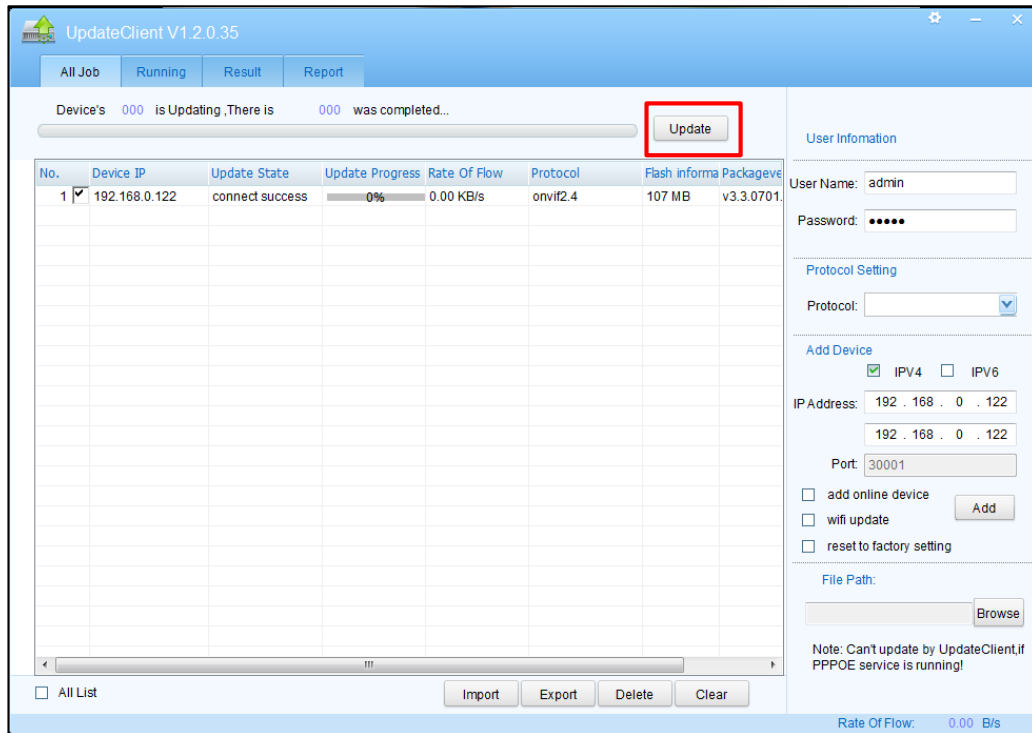
File Path:

Browse

Note: Can't update by UpdateClient, if PPPOE service is running!

6. Start Firmware update

A. Click "Update"

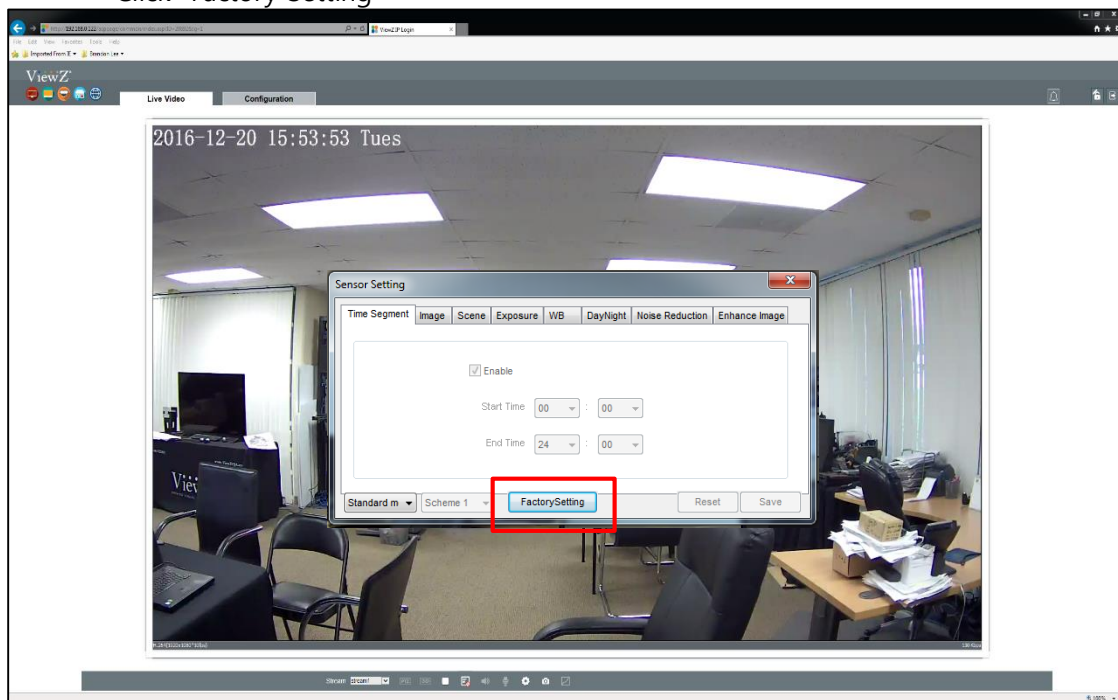


7. When update is completed, the system will be automatically rebooting.

8. After reboot, You need to factory restore of IPC(IP PVMZ)

A. Sensor Setting

⇒ Click "Factory Setting"



B. Camera Maintenance

