

VZ-IP-PVM-N SERIES

10", 23", 27" & 32" IP PUBLIC VIEW MONITOR

IP SEARCH & Firmware UPDATE **MANUAL**



ViewZ®
www.viewzusa.com

Please read this manual thoroughly before use, and keep it handy for future reference.

IP SEARCH

Instructions

**Note**

- IP Search tool finds IP devices on the network, change the IP address of devices and upgrade the firmware of devices. Here are the steps to use this program.

1. Connect



Connect the computer in LAN, and double click the icon (under "IPSearch Tools" folder) to execute the program.

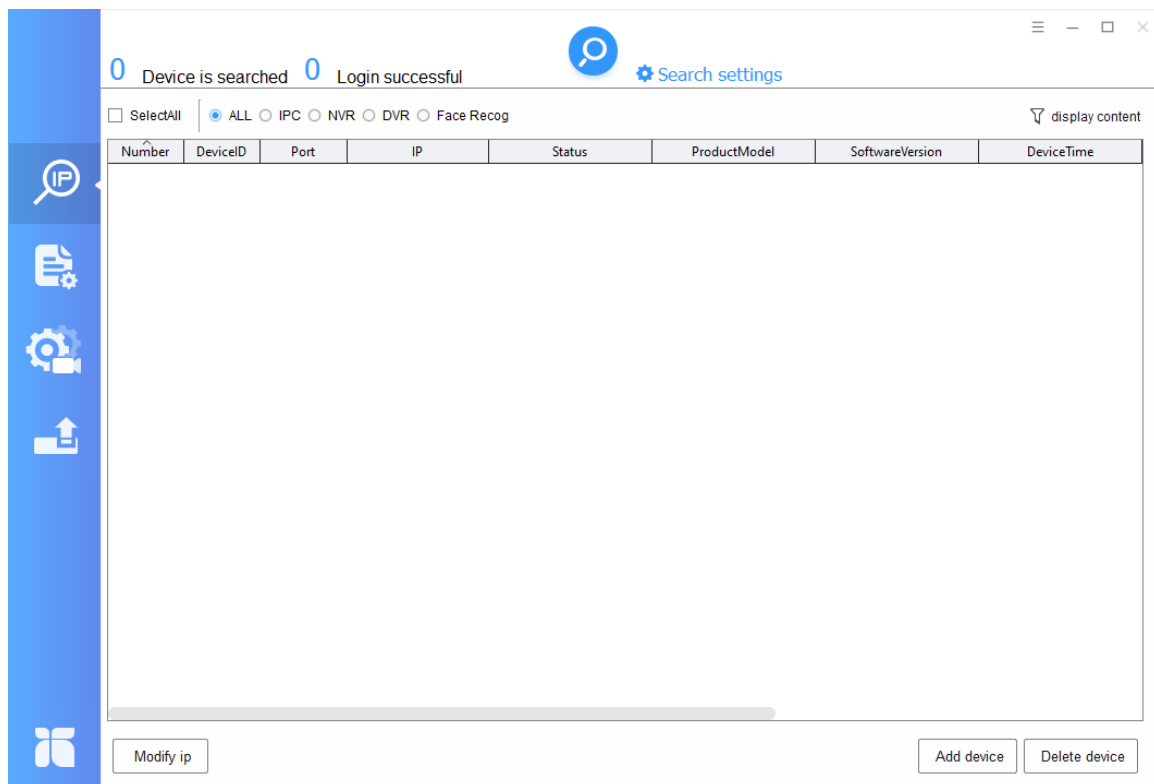


IP SEARCH

2. Software Interface



Software interface shown below will appear.

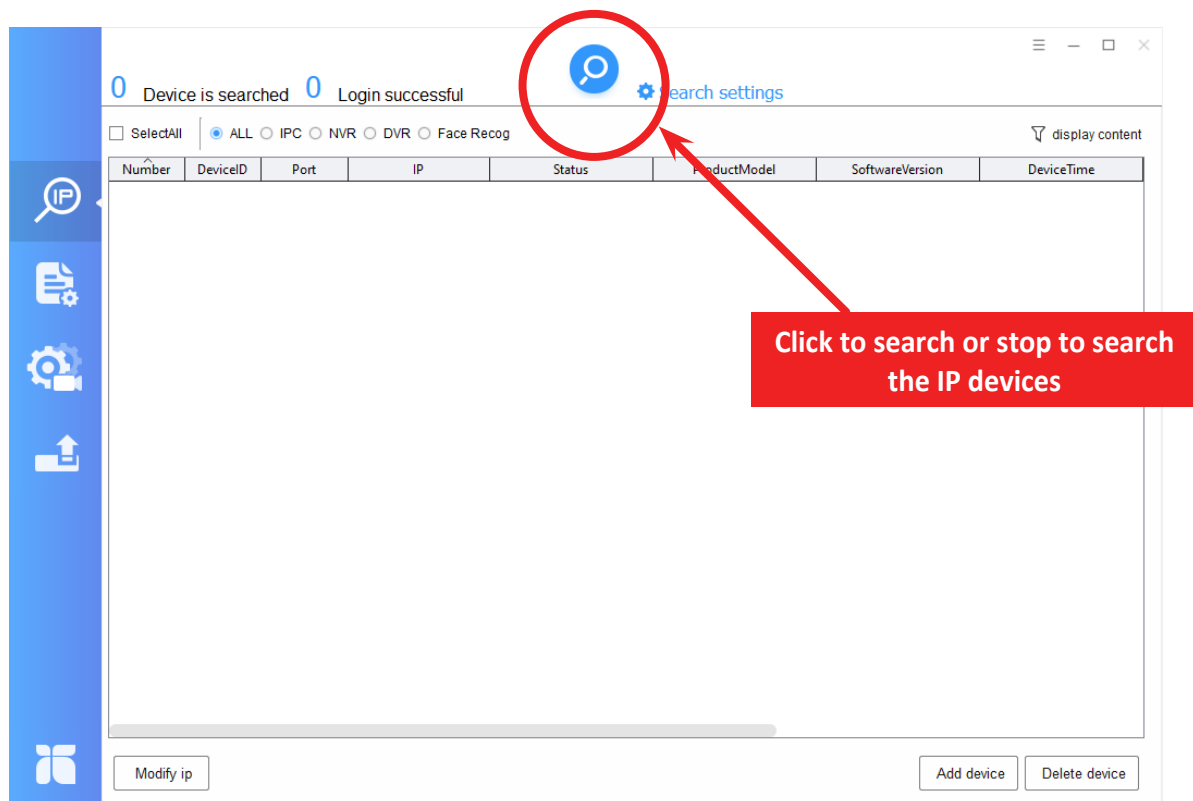


IP SEARCH

3. Start



Click “Start” button to automatically search the IP devices on the network, as shown below.



It will search for IP devices on the same network, and show the “Device ID”, “IP Address”, “Product Model” and “Software Version”

You can click “Search Icon” to stop the search when you find device/devices that you want.

IP SEARCH

4. Change IP address of IP encoder

To change the IP address of the desired IP device, select the device from the list and then click "Modify IP". You can also change the other network parameters by doing the same.

6 Devices are searched 5 Login successful

SelectAll ALL IPC NVR DVR Face Recog display content

Number	DeviceID	Port	IP	Status	ProductModel	SoftwareVersion	DeviceTime
1	0E315C	30001	192.168.255.229	Connection failed	iPVMZ	v3.3.0701.1002.147.0.70.1.20	
2	19E...18	30001	192.168.0.220	Online	iPVMZ	v3.6.1601.1004.147.0.12.9...	2022-02-28 14:29:53
3	10BE...	30001	192.168.0.193	Online	iPVMZ	v3.5.0804.1003.147.0.27.1...	
4	15B...	30001	192.168.0.120	Online	iPVMZ	v3.5.0804.1003.147.0.27.1...	
5	09...A15	30001	192.168.0.99	Online	iPVMZ	v3.3.0701.1002.147.0.70.1.23	
6	1B0...	30001	192.168.0.222	Online	iPVMZ	v3.6.1601.1004.147.0.12.9...	2022-02-28 22:29:50

Modify ip Add device Delete device

1. Check the box to select the device
2. Click 'Modify IP' button

Modify IP

Mode ☒ Static ☐ DHCP

Begin IP

☐ Set to same IP

Subnet mask

Gateway

OK

When click "Modify IP" button, this window will popup. You can choose 'Static' or 'DHCP' option.

Modify IP

Mode ☒ Static ☐ DHCP

Begin IP

☐ Set to same IP

Subnet mask

Gateway

OK

The 'Static' option let you type the IP address / subnet mask / gateway.

Modify IP

Mode ☐ Static ☒ DHCP

Begin IP

☐ Set to same IP

Subnet mask

Gateway

OK

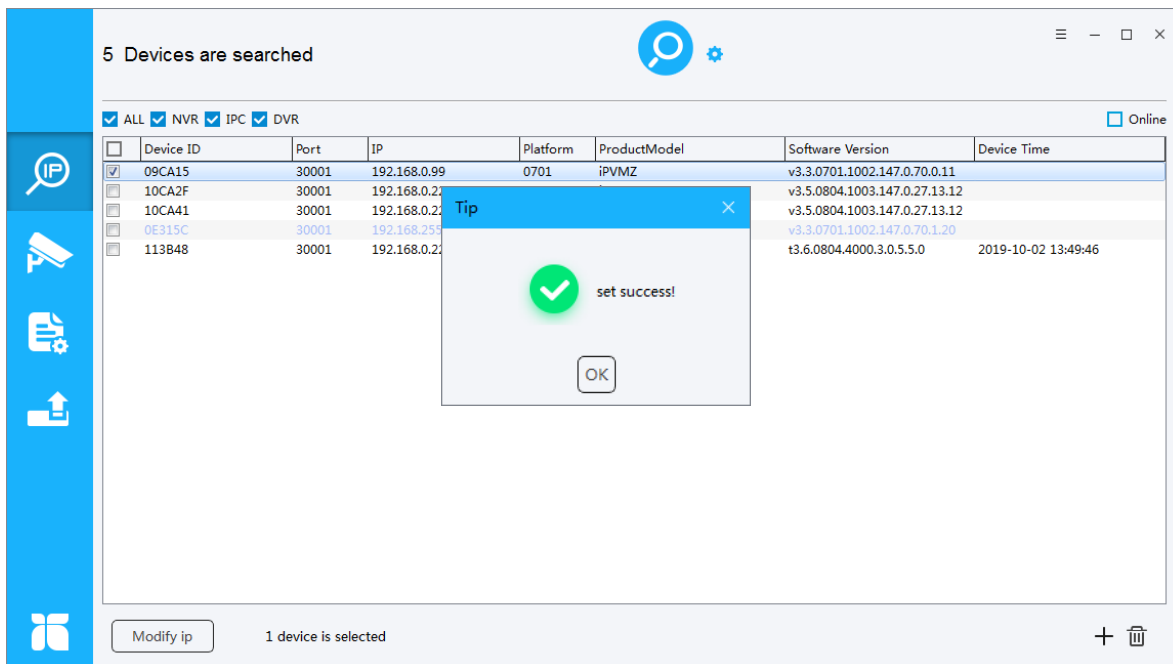
The 'DHCP' option will let you have a proper IP address automatically.

IP SEARCH

5. Complete



Once the changes have take place, the message shown below will be prompted to confirm the change.



FIRMWARE UPGRADE

6. Firmware Upgrade

To update the firmware of the desired IP device , select the device from the list and then click "Upgrade".

6 Devices are searched 4 Login successful

SelectAll ALL IPC NVR DVR Face Recog

Number	DeviceID	IP	ProductModel	SoftwareVersion	UpgradePort	Upgrade status
<input type="checkbox"/> 1	1B07E7	192.168.0.222	iPVMZ	v3.6.1601.1004.147.0.12.9....	8083	
<input type="checkbox"/> 2	0E315C	192.168.255.229	iPVMZ	v3.3.0701.1002.147.0.70.1.20	8083	
<input type="checkbox"/> 3	19CA15	192.168.0.99	iPVMZ	v3.3.0701.1002.147.0.70.1.23	8083	
<input type="checkbox"/> 4	15B692	192.168.0.120	iPVMZ	v3.5.0804.1003.147.0.27.1...	8083	
<input checked="" type="checkbox"/> 5	19EC18	192.168.0.220	iPVMZ	v3.6.1601.1004.147.0.12.9....	8083	
<input type="checkbox"/> 6	10BE15	192.168.0.193	iPVMZ	v3.5.0804.1003.147.0.27.1...	8083	

1. Click 'Firmware Update' button
 2. Check the box to select the device
 3. Click 'Choose File' button & select the firmware file
 4. Click 'Upgrade' button to upgrade the firmware

D:\ViewZ_Brochure\Security\YZ-IPVM-New\Software Choose File

☐ Reset ☒ Forced to upgrade Upgrade

* Do not power off during the upgrade process, the device will restart automatically after the upgrade is successful.

5. Do not turn off the 'IPSearchTool' program and selected device during the process of upgrade. When you click the 'Upgrade button', the message will be popup on the '⑤' area. The displaying message is 'uploading, upgrading and success'. When you see the 'success' message, the selected device will be automatically rebooting.

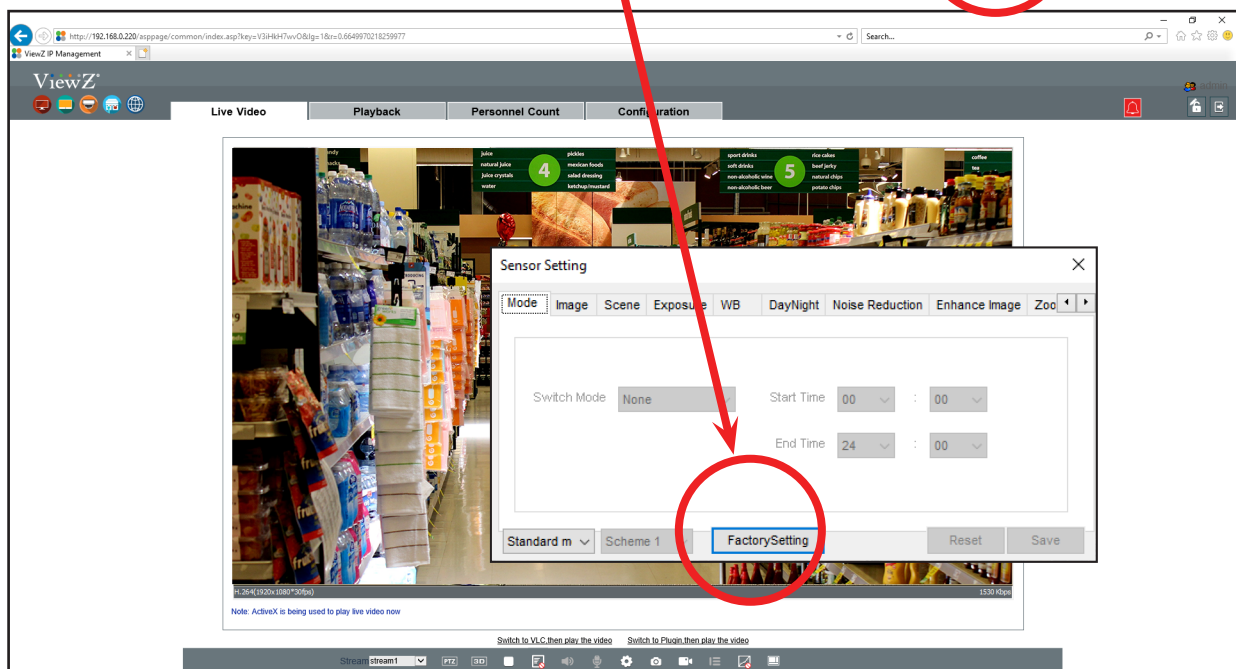
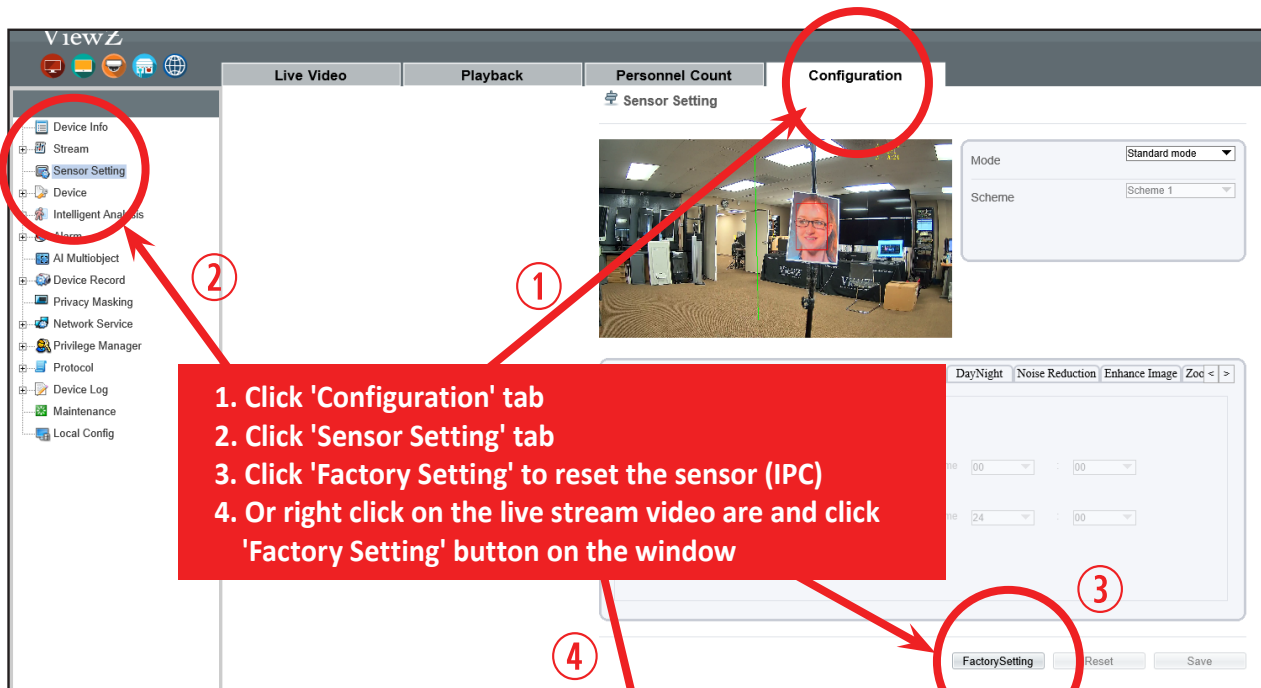
FIRMWARE UPGRADE

6. Firmware Upgrade



After upgrading of firmware, you should reset the sensor(IPC) and then restore to Factory Default to apply the upgrading.

To reset the sensor, you have 2 choices - go to 'Configuration' or right-click on the Live Video stream - web IP management software on the browser.



FIRMWARE UPGRADE

6. Firmware Upgrade



To restore Factory Default, go to 'Maintenance' and click 'Restore to Factory Default' button - web IP management software on the browser.

Camera Maintenance

Restart

Auto Reboot

Reboot Interval

Time ☐ Sun ☐ Mon ☐ Tues ☐ Wed ☐ Thur ☐ Fri ☐ Sat :

Update Please select upgrade file

Reserve IP setting

Restore To Factory Default

Save to local Hard Drive

Load from Local Hard Drive Please choose file