

## ViewZ Monitor Size 26" ~ 40"

### Adjustable Tilt

12° of continuous tilt puts flat-panel at the perfect viewing angle

### Horizontal Adjustment

Built-in lateral shift allows for flexible placement of flat-panel

### Cable Routing

Built-in cable management hides unsightly cable clutter and prevents cable pinching

### Secure Mounting

Locking screws and knurl knobs secure flat-panel

### Versatile Design

Allows attachment to wall, Ceiling, cart or stand



26"-40"



160 lbs.



100 x 100  
Min.



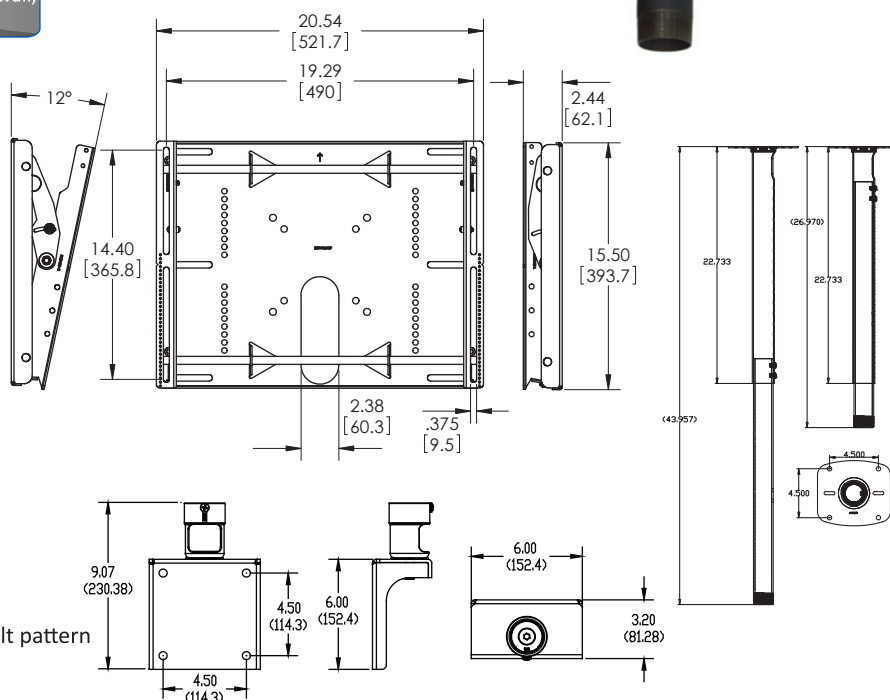
493 x 360  
Max.



+/-12°

## VZ-CMK03 ADVANTAGES:

- Mounts to walls, floor stands, carts and ceiling adapters
- Features patented Clevis technology for effortless tilt
- Built-in lateral shift
- Mounts to studs at 16 in. and 18 in. spacing
- Durable, textured powder coat finish
- Allows 12° continuous tilt
- Features Griplates™ (patent pending) to safely support flat-panel displays
- Adjusts from 24 - 46 in. (610-1168mm) in 1.25 in. increments
- Adapts to 1.5 in. NPT
- Works with both flat-panel mounts and projector mounts
- Multiple attachment points adapt to a single stud or a 4.5" bolt pattern
- Can be installed on a wood stud or concrete ceiling structure



## Contact ViewZ

- Address: 177 W. Orangethorpe Ave., Placentia, CA 92870
- Phone: (714)996-1177, Fax: (714)996-1138
- Sales: sales@viewzusa.com
- Specifications subject to change without notice.

MODEL #	VZ-CMK03
Display Range	26" - 40"
Weight	36 lbs
Weight Capacity	160 lbs. (72.57kg)
Tilt	+12.00°
Pole Extension	24" ~ 46"
Mounting Pattern Type	Range
Mounting Patterns	100 x 100(Min) ~ 490 x 360(Max)