

## VESA MOUNTING HEAD FOR CEILING MOUNT



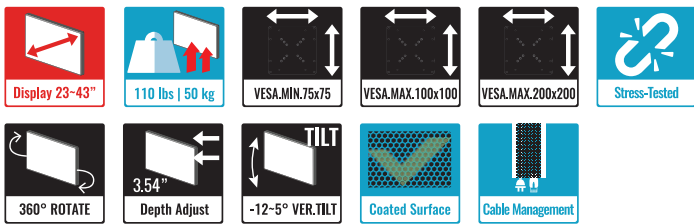
### VZ-CM-V1 ADVANTAGES

- Mounting head for 23" to 43" CCTV & Video Wall Monitors
- Load Capacity is 110 lbs / 50 kg
- 5° Tilt Up and 12° Tilt Down Adjustment along with 360° Pan Rotation For Achieving that Perfect Viewing Angle
- VESA Standard - 75x75, 100x100, 200x100 and 200x200
- Easy Cable Management
- Pole Option : VZ-CM-P36 (35.5") and VZ-CM-P15 (8.7" ~ 14.55")

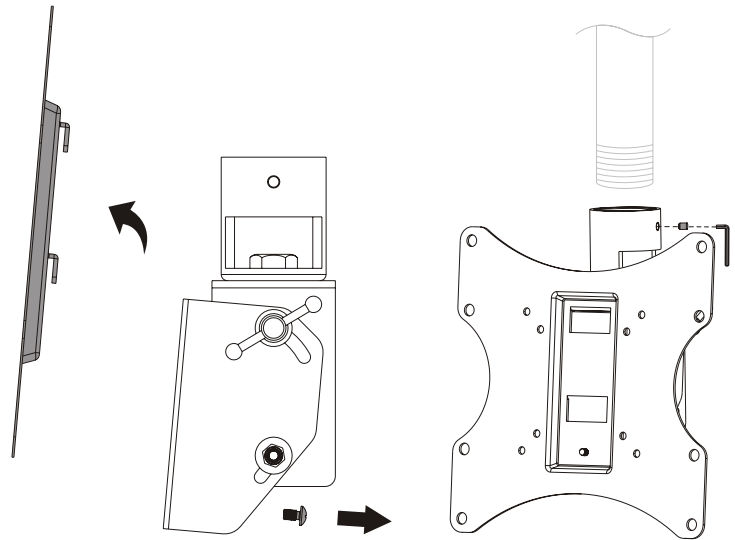
### Designed specifically for

VZ-24/27/32/43CMP	VZ-PVM-I2W3-N	VZ-PVM-I2B3-N
VZ-PVM-I3W3-N	VZ-PVM-I3B3-N	VZ-PVM-I4W3-N
VZ-PVM-I4B3-N	VZ-PVM-I5W3-N	VZ-PVM-I5B3-N
VZ-PVM-P4B3/P4W3	VZ-PVM-P5B3/P5W3	VZ-24/32IPM

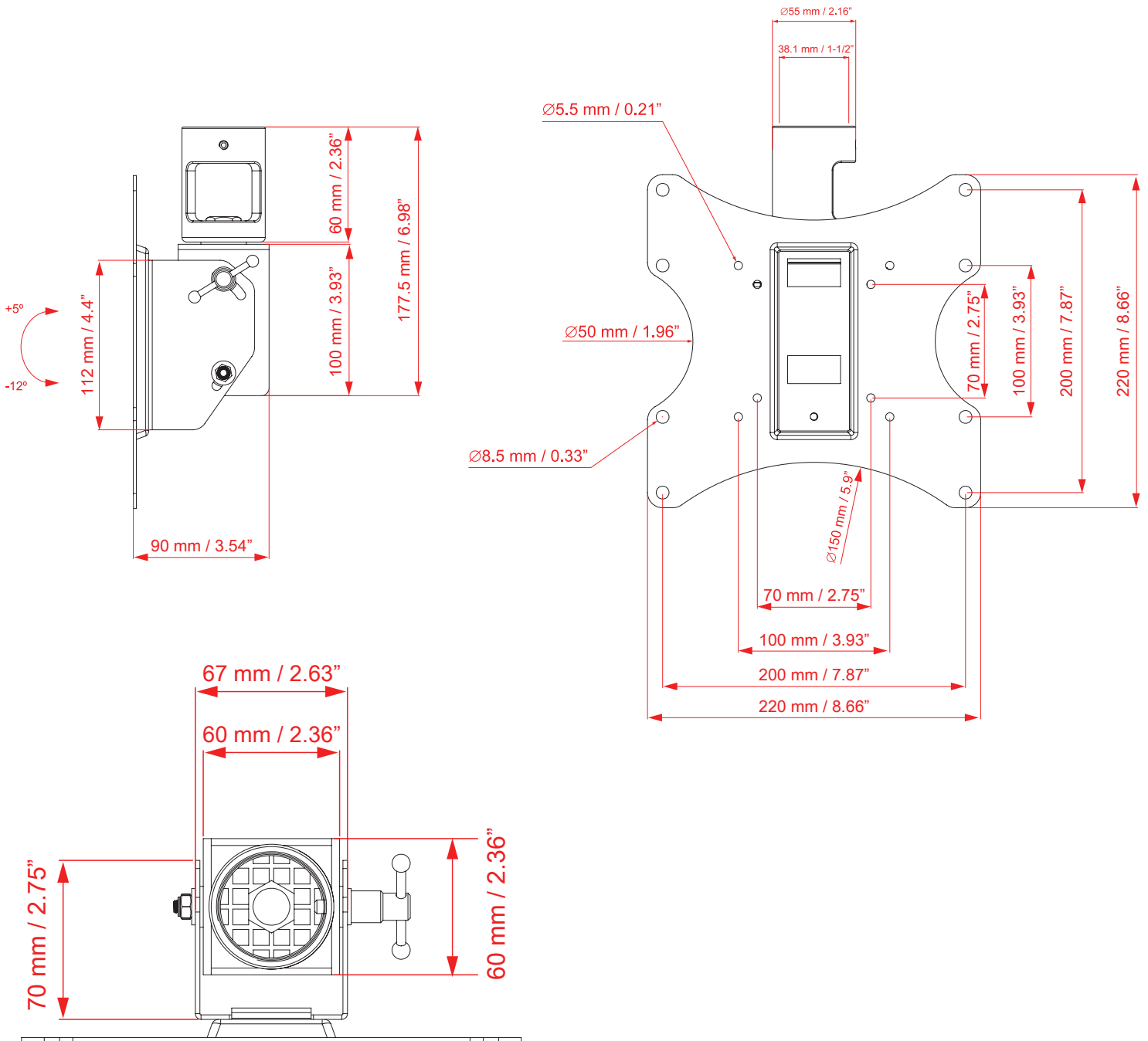
### FEATURES



MODEL #	VZ-CM-V1
<b>FEATURES</b>	
Net Weight	3.85 lbs / 1.75 kg
Weight Capacity	110 lbs / 50 kg
Display Range	23" ~ 43"
Size (Width x Height x Depth)	220 x 252 x 90mm / 8.66 x 9.92 x 3.54"
Pole ( R x Length )	Ø 38.1 x 76mm / Ø 1-1/2" x 3"
PAN Rotation	360°
Tilt Capability	+5° ~ -12°
Mounting Patterns Type	VESA
Mounting Patterns	75x75, 100x100, 200x100, 200x200



### DIMENSIONS



### Contact ViewZ

- Address : 1030 N ARMANDO ST., ANAHEIM, CA 92806
- Phone : (714) 996-1177, Fax : (714) 996-1138
- Sales : sales@viewzusa.com