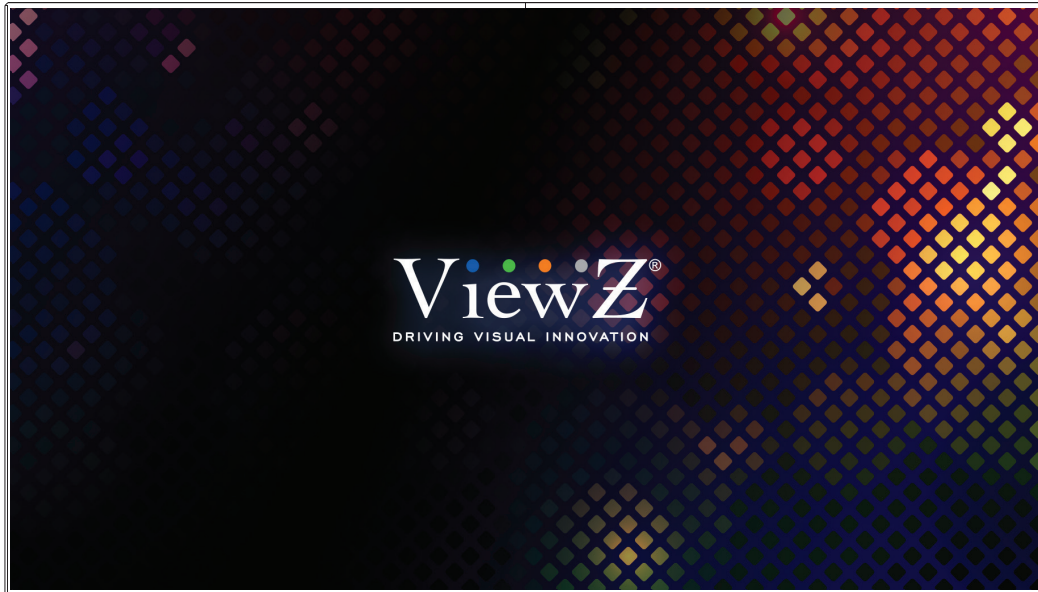


VZ-UNBS SERIES

Video Wall Software

USER MANUAL



ViewZ®
www.viewzusa.com

Please read this manual thoroughly before use, and keep it handy for future reference.

CONTENTS

Cable Configuration	4
Launch the Program	5
1. Interface	6
2. Communication Setting	7
3. Video Wall Splicing Set up	9
4. Administration Tool Bar - ID Setting	10
Menu Bar	12
1. Sets / Com Setting	12
2. Sets / Splice Setting	14
3. Sets / Matrix Setting	15
4. Sets / Switch Setting	18
5. Tool / Frame Effect	19
6. Tool / Image Adjustment	20
7. Tool / Static Screen	25
8. Tool / Save Machine	26
9. Plans / Save Plan	27
10. Plans / Read Plan	28
11. Plans / Polling Plan	29
12. Subtitle	30
13. Display / HDMI Type, Display Mode & Information Display	31
14. Display / Query Display & Clear Query	32
15. Help / User Registration	33

CONTENTS

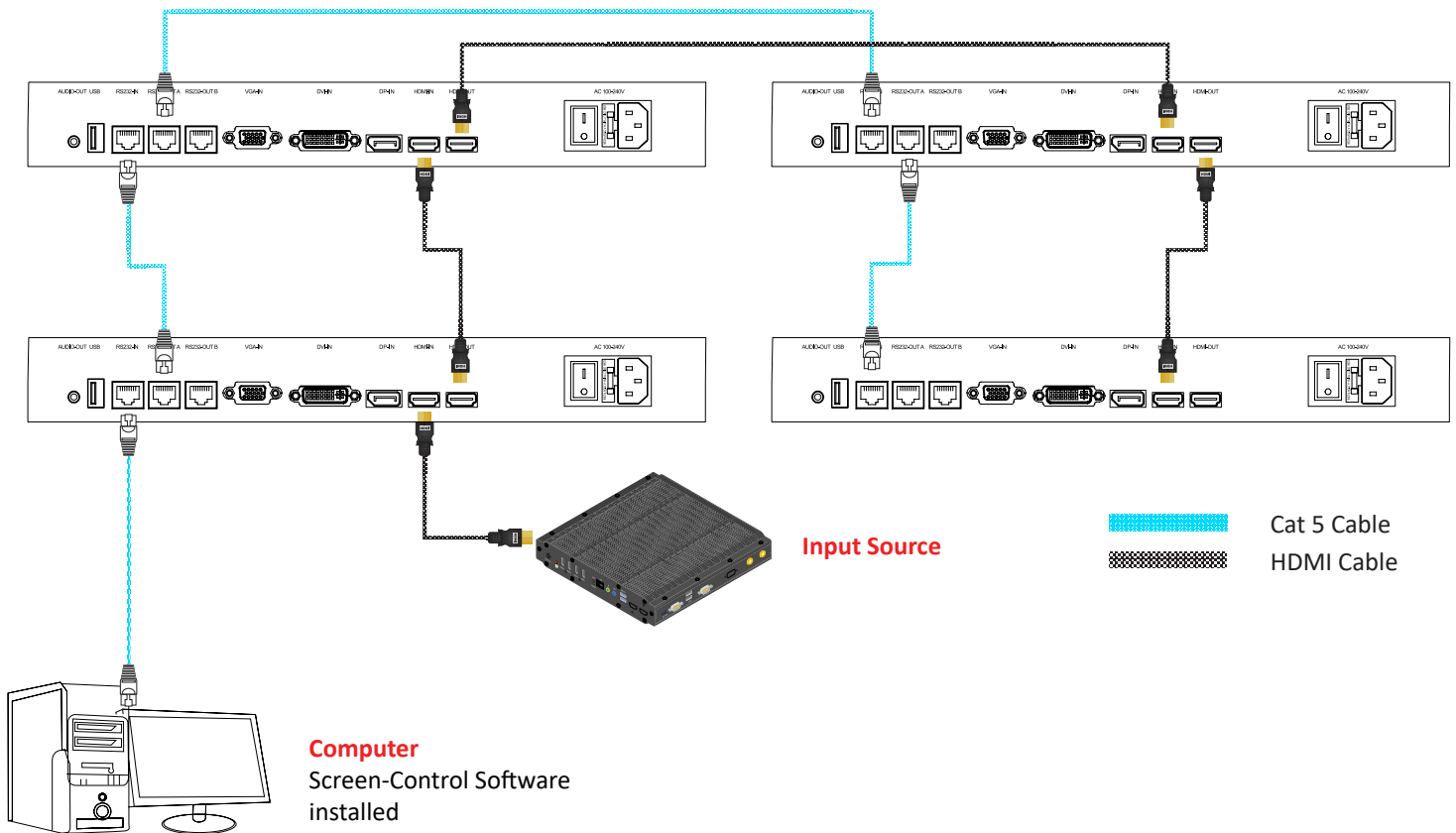
Tool Bar	34
Operation Area	35
Administrator Tool Bar	36
1. Temperature Control	37
2. Screen Setting	38
3. ID Setting	39
4. Heavy Penetrance	40
5. Logo	41
6. System Configuration	42
7. Debug Window	43
8. Command Display Window	44

SERIAL CABLE CONFIGURATION

Video Wall Wiring Configurations - Screen Control SW

! Caution

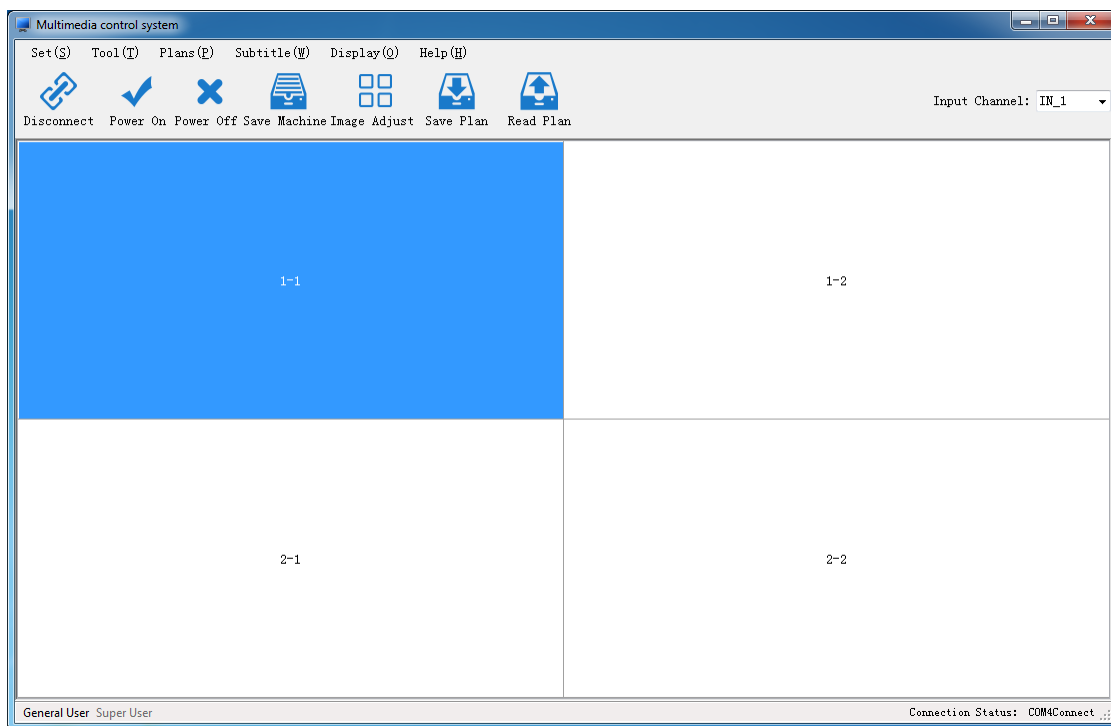
- Before the operation of this program, user need to confirm the connection between the computer (which has Screen-Control program) and monitors



CONTROL AND FUNCTION

Launch the program

- Find the '**ScreenControl**' program and double click to launch it.
- First of all, check the user account is the super user (administrator) or not.
If the User Account is not an Administrator (super user), you can change it as administrator account. If you want to know about more detailed information of Administrator (super user) account and its usage (administrator tool bar), please refer to **page 36**.



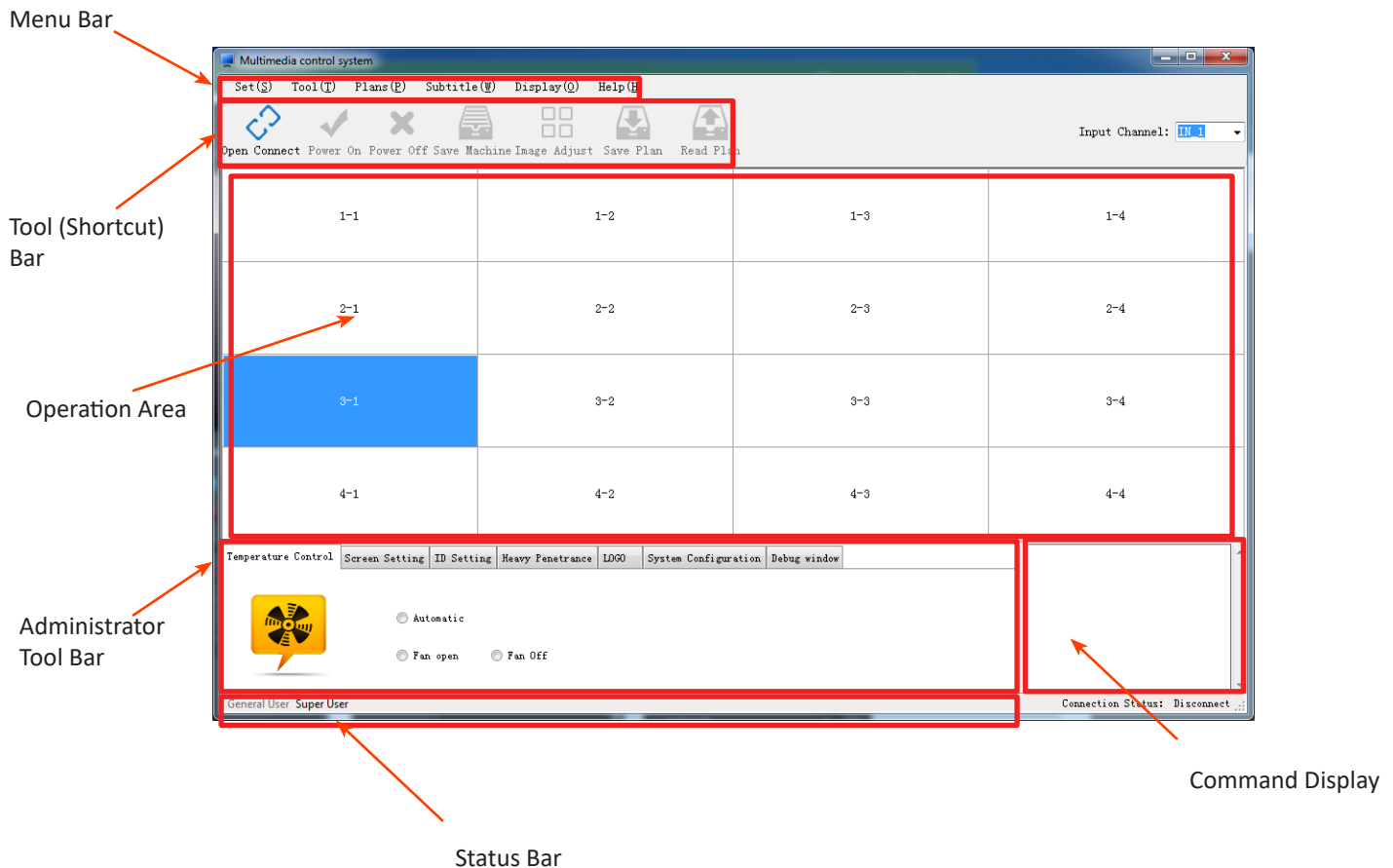
Caution

- Microsoft .NET 4.0 is required to run Video Wall Control program. If your computer does not have it, please install this program.
- If you cannot download, please check provided CD/USB to install Microsoft .NET 4.0
- If you can launch the program, first of all, you need to connect RS232 serial cable between monitor and computers.
- RJ-45 to RS232 converter & converter driver is included in CD/USB.

CONTROL AND FUNCTION

Launch the program - Interface

- Administrator & User interfaces will be different.
- Administrator interface consists of six parts: menu bar, tool bar, operation area, administrator tool bar (additional function bar), command display and status bar.
- General User can see 5 parts except administrator tool bar



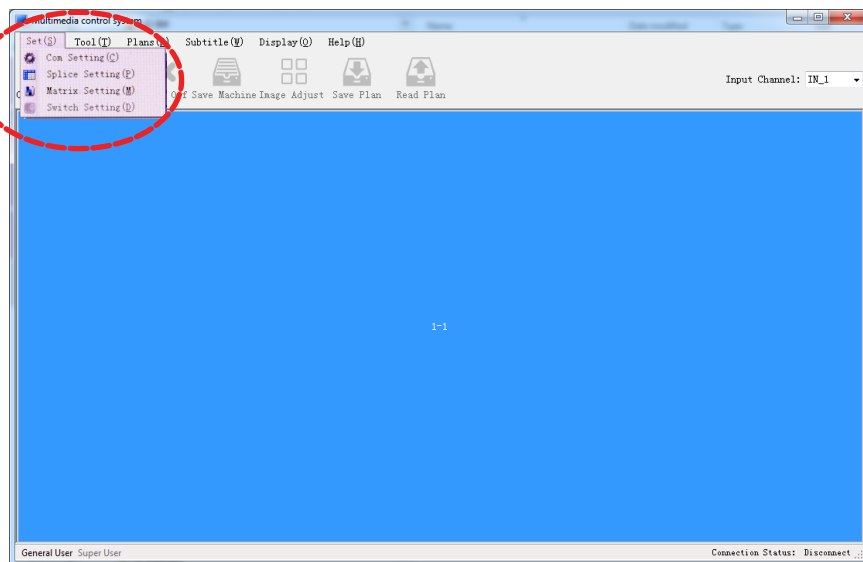
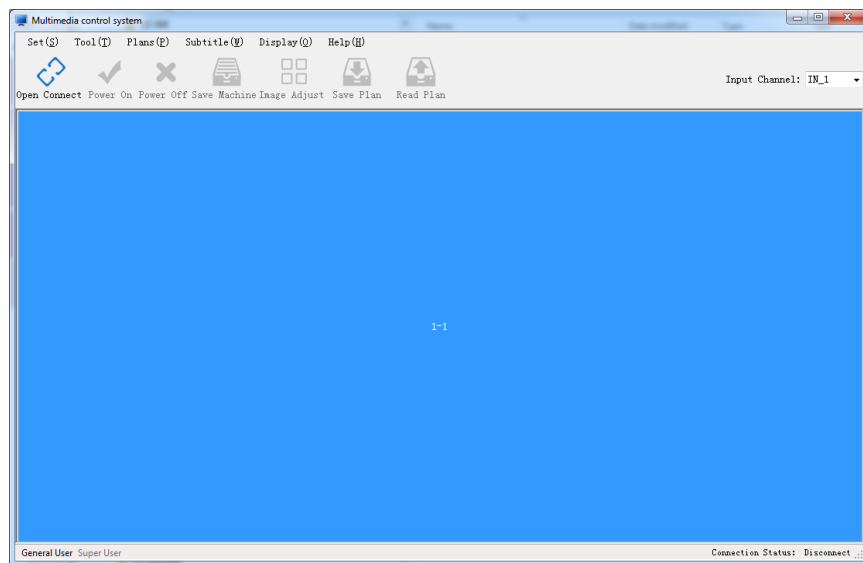
- Menu bar - Video wall system control
- Tool bar (shortcut) - Quick access to the function of program
- Operation area - Allow to control each monitor
- Administration tool bar - Control the monitor in factory level
- Status bar - Display the current status of program
- Command display - Show the ASCII code command for monitors

CONTROL AND FUNCTION

Launch the program - Menu Bar - Sets(S) / Com Setting (C)

- Before starting program, user should check **Com Setting (Communication Setting)**. Please check the connection between the computer and the monitor via RJ-45, RJ-45&RS-232 Converter and RS-232.

⚠ Caution : **Com Setting** should be done before **Open Connect** (Tool bar) button click. The **Com Setting** cannot be edited after **Open Connect - connected status**.

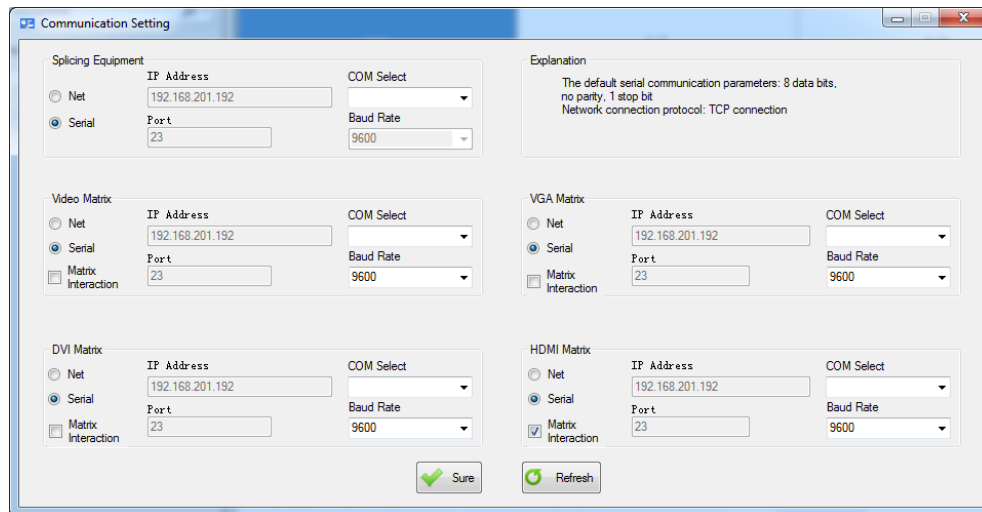


Select **Com Setting (C)**

Main window

CONTROL AND FUNCTION

Launch the program - Menu Bar - Sets(S) / Com Setting (C)



Communication Setting window

- **Network connection:** Select "**Net (Network Connection)**" and set the IP address and port number to be connected.
 - **Serial port connection:** Select "**Serial (Serial port connection)**" to set the COM port and baud rate to be connected.
 - **Matrix Interaction:** Check "**matrix interaction**" to perform matrix linkage, if necessary.
 - Click the **Refresh** button before set it up, and then input proper info or select it.
- ▶ **How do I know which COM number to choose?**
 Computer serial port info : you can check this at Computer Window (which run this program) and then Right-click "My Computer" → "Management" → "Device Manager" → "Port (COM and LPT)" → USB Serial Port (COM)
 Check the relevant serial port number of the computer and compare it with **Communication setting** window.

▶ **If you have a correct connection via serial cable, Serial port connection info will show COM info automatically.**


⚠ Caution : The (Communication) Connection should be connected by provided tools (RJ-45 & RJ-45 to RS232 converter). Or user can make own serial cable based on given info (please refer to **ViewZ UNBS User Manual**.)

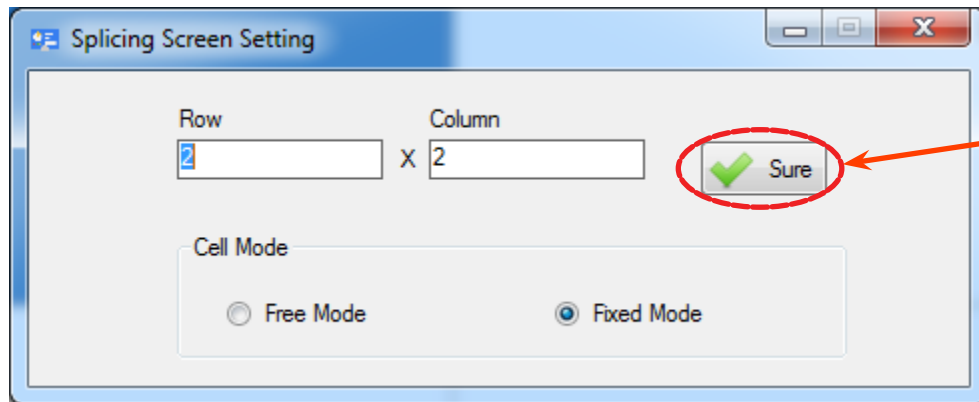
To use converter, user need to install the converter driver on the computer (which Video wall program installed). The converter driver (Prolific USB-to-Serial) is included in the CD/USB.

CONTROL AND FUNCTION

Launch the program - Menu Bar - Sets(S) / Splice Setting (P)

- If you correctly setup on **Com Setting**, you should type the correct monitor number to '**Sets/Splice Setting**.'
- Click **Set/Splice Setting** on menu bar
 - **Row** (Vertical number of monitors) - manually type the number
 - **Column** (Horizontal number of monitors) - manually type the number
 - **Cell Mode / Fixed Mode** - If selected, the height/width of unit(monitor)s will be fixed (based on detection). We recommend to choose 'Fixed Mode' be changed
 - **Cell Mode / Free Mode** - If selected, the height/width of unit(monitor)s can be changed

 **Note :** After selecting mode & updating row/column numbers, user need to click 'Sure' button to save current update. If not click, the updated value will not be applied.



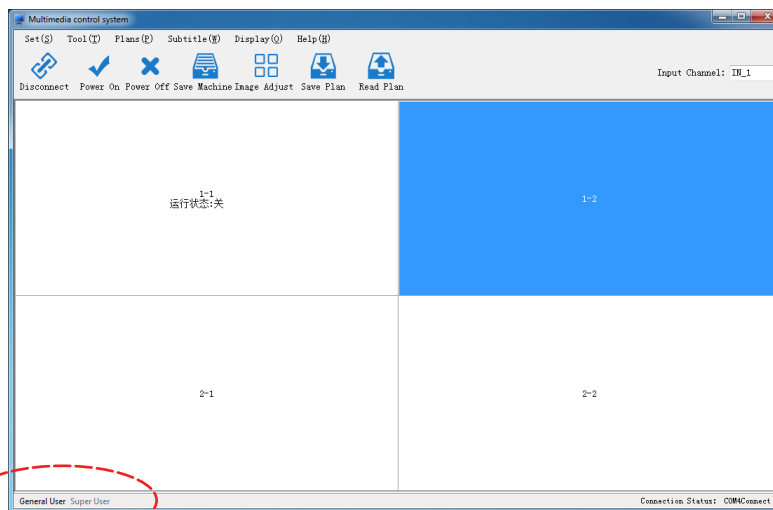
Splicing Screen Setting window

CONTROL AND FUNCTION

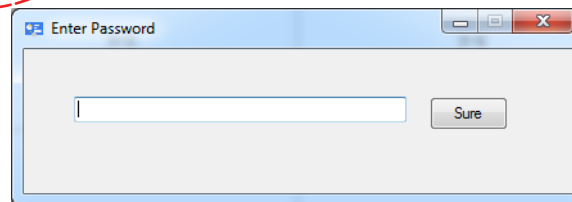
Launch the program - Administrator (Super User) Tool Bar / ID Setting

- Administrator Tool Bar**

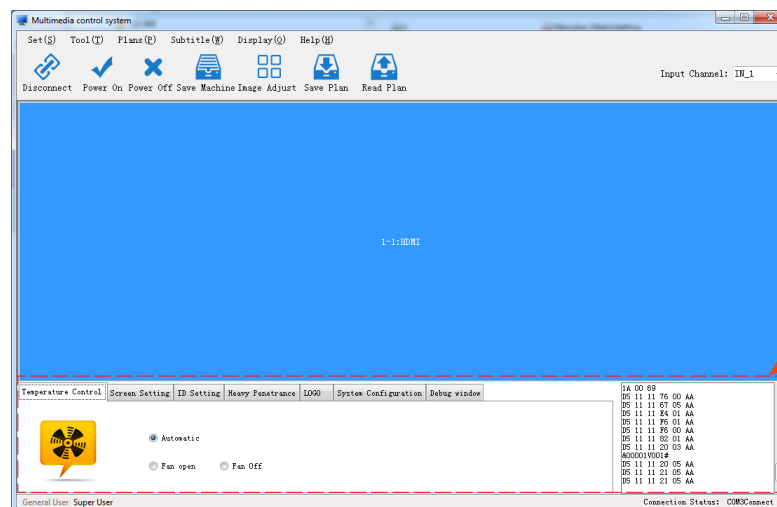
- The Administrator (Super User) Tool Bar is to manage more professional status of monitors. This administrator tool bar let user manage monitor temperature, monitor display, video wall system configuration, heavy penetrance, logo display, system configuration and debug mode.



Double Click this text ('Super User') area to launch the super admin menu



After double click on left-bottom area, the above window will popup. The default password is '123321'.



Another toolbar will be displayed at the bottom

Administrator (Super User) tool bar

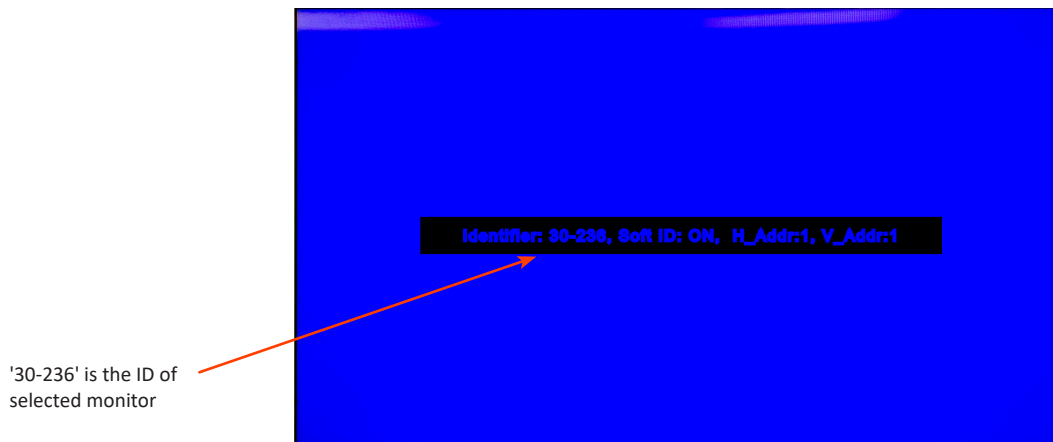
CONTROL AND FUNCTION

Launch the program - Administrator (Super User) Tool Bar / ID Setting

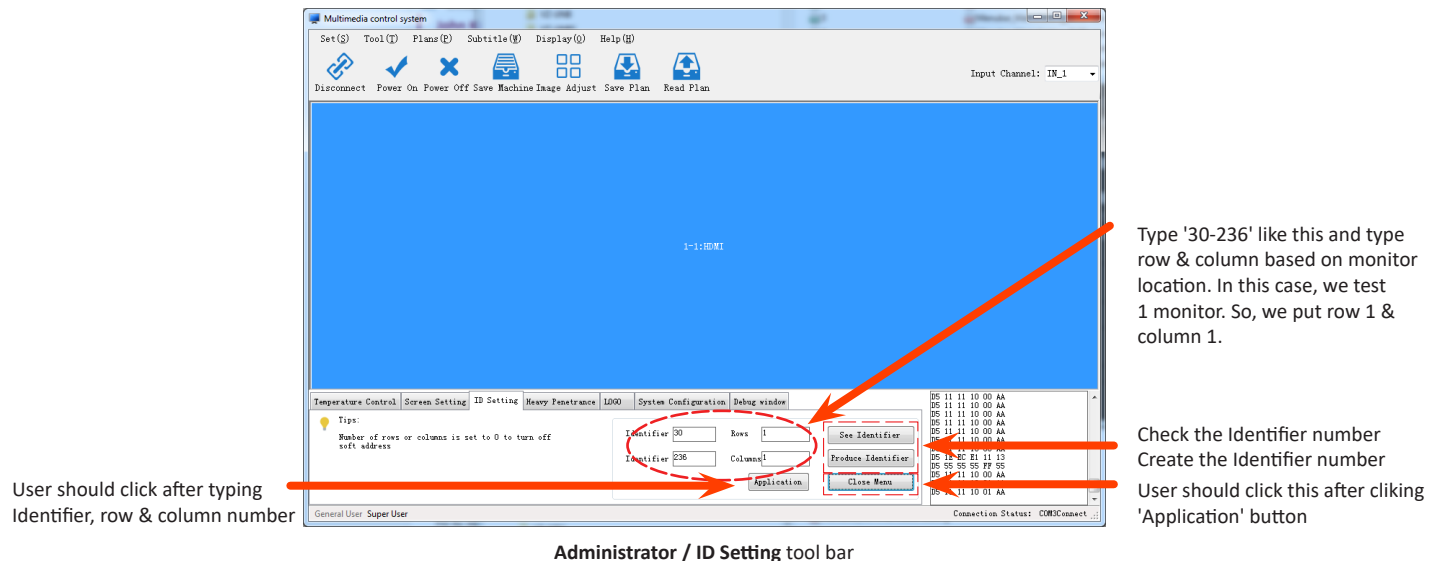
- Administrator Tool Bar / ID Setting**

- To use all function of 'ScreenControl (Video Wall Program)', user should setup the proper ID number for each monitor (based on **Splice Setting (page 7)**).

- On the video wall, click '**ID(0)**' button on the **remote controller** and see the **Identifier number** - Note !!
Or user can launch the 'ScreenControl' program, and get into **Administrator tool bar/ID Setting**. Then, user can see the Identifier number or create new Identifier number (we recommend use remote controller / check physical identifier number of monitor)
- Get into **Adminstrator Tool Bar/ID Setting**. Type the given **Identifier number, row & column** info on **ID Setting**.
- Click '**Application**' button and then click '**Close Menu**' button.
- Let's test the connection via **Power On / Power Off** (on Tool (Short Cut) Bar) click.



Sample Monitor ID information - you can see this, when click the 'Produce Identifier' (see below)

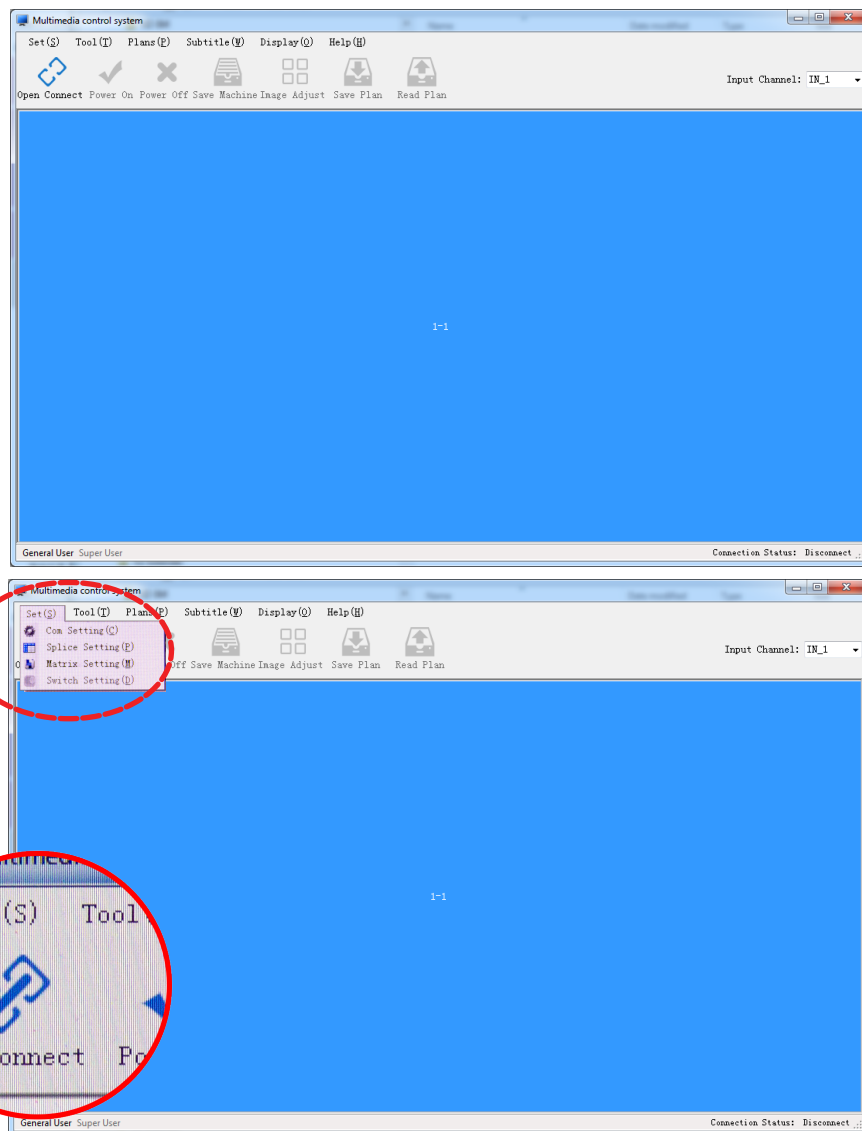


CONTROL AND FUNCTION

Menu Bar - Sets(S) / Com Setting (C)

- Before starting program, user should check **Com Setting (Communication Setting)**. Please check the connection between the computer and the monitor via RJ-45, RJ-45&RS-232 Converter and RS-232.
- **Com Setting (Communication Setting)** mainly includes: **network connection** setting, **serial port connection** setting, **monitor matrix connection** setting.
- **Sets/Com Setting** - Splicing equipment, Video matrix, DVI matrix, VGA matrix, HDMI matrix for Setting of network connection, serial port connection and matrix linkage.

⚠ Caution : **Com Setting** should be done before **Open Connect** (Tool bar) button click. The **Com Setting** cannot be edited after **Open Connect - connected status**.



Select Com Setting (C)

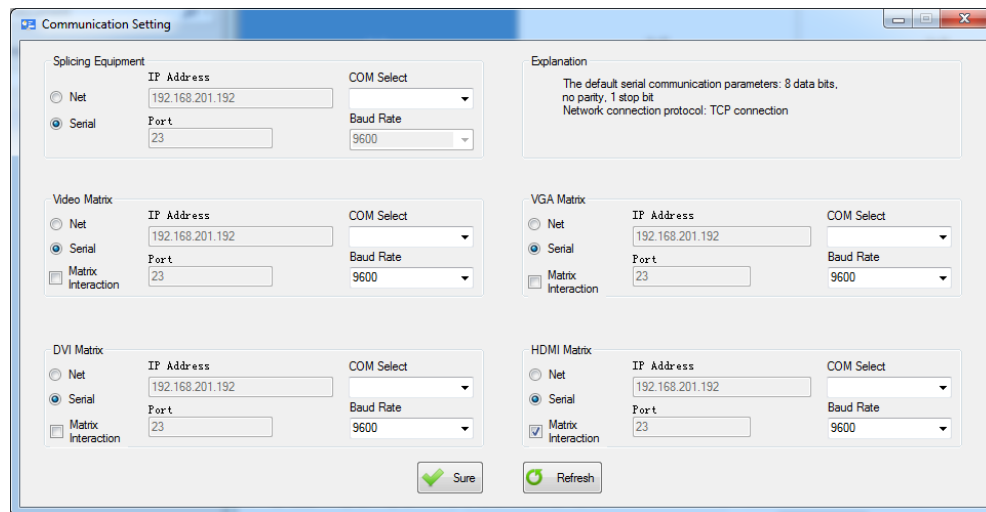
This means **Communication**
Connected

Sets/Com Setting menu

CONTROL AND FUNCTION

Menu Bar - Sets(S) / Com Setting (C)

- **Network connection:** Select "**Net (Network Connection)**" and set the IP address and port number to be connected.
- **Serial port connection:** Select "**Serial (Serial port connection)**" to set the COM port and baud rate to be connected.
- **Matrix Interaction:** Check "**matrix interaction**" to perform matrix linkage, if necessary.
- Click the **Refresh** button before set it up, and then input proper info or select it.
 - ▶ **How do I know which COM number need to be setup ?**
 Computer serial port info : you can check this at Computer Window (which run this program) and then Right-click "My Computer" → "Management" → "Device Manager" → "Port (COM and LPT)" → USB Serial Port (COM)
 Check the relevant serial port number of the computer and compare it with **Communication setting** window.
 - ▶ **If you have a correct connection via serial cable, Serial port connection info will show COM info automatically.**




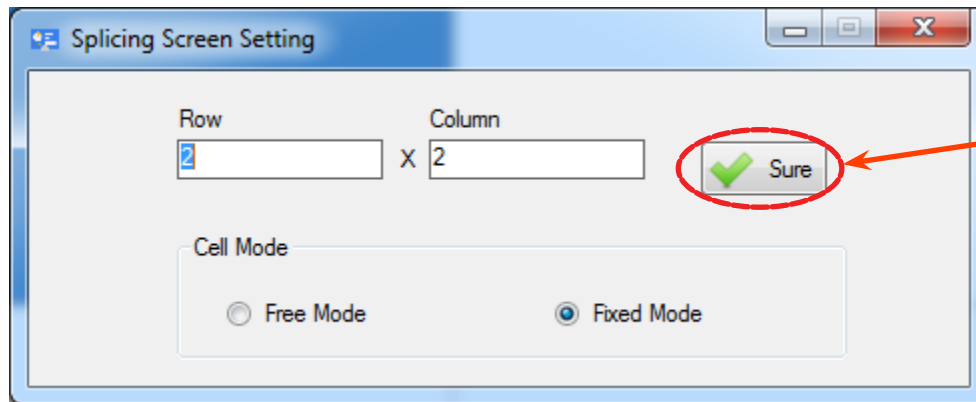
Communication Setting window

CONTROL AND FUNCTION

Menu Bar - Sets(S) / Splice Setting (P)

- Click **Set/Splice Setting** on menu bar
 - Row** (Vertical number of monitors) - manually type the number
 - Column** (Horizontal number of monitors) - manually type the number
 - Cell Mode / Fixed Mode** - If selected, the height/width of unit(monitor)s will be fixed (based on detection). We recommend to choose 'Fixed Mode' be changed
 - Cell Mode / Free Mode** - If selected, the height/width of unit(monitor)s can be changed

 **Note :** After selecting mode & updating row/column numbers, user need to click 'Sure' button to save current update. If not click, the updated value will not be applied.

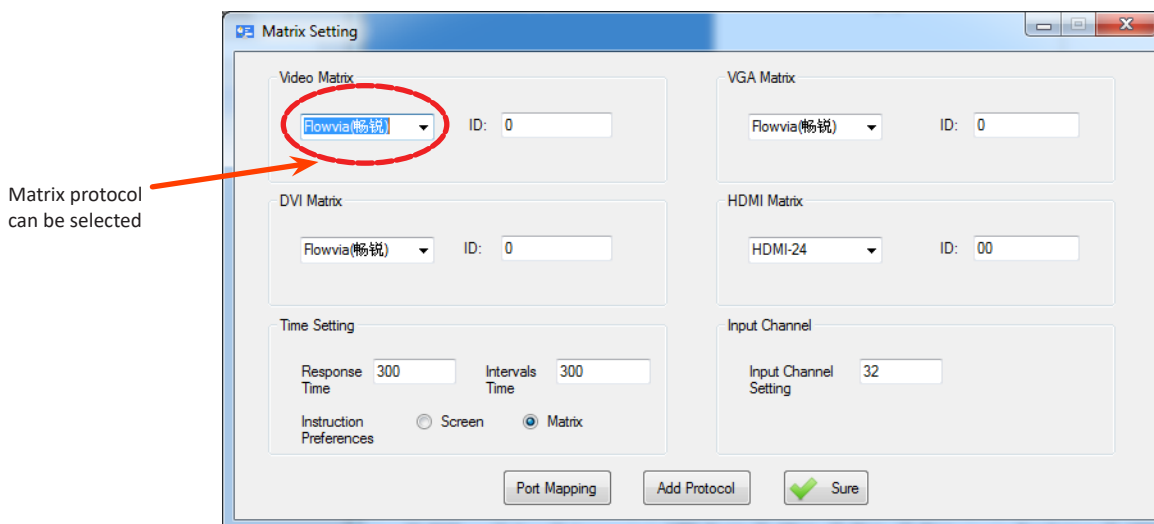


Splicing Screen Setting window

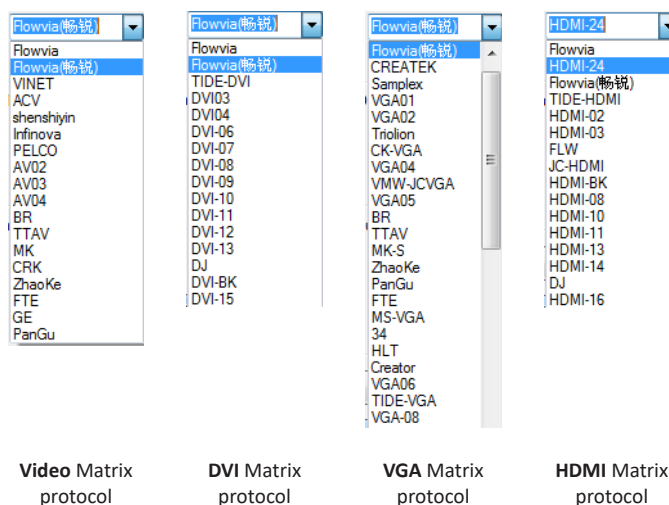
CONTROL AND FUNCTION

Menu Bar - Sets(S) / Matrix Setting (M)

- The **Matrix Setting** is to control optional matrix switch/splitter through the serial communication
- Click **Set/Matrix Setting** on menu bar
 - **Matrix protocol selection** - Under each matrix (VIDEO, DVI, VGA & HDMI), user can select the proper protocol
 - **ID (Matrix ID)** - Under each matrix (VIDEO, DVI, VGA & HDMI), user can input its own ID
 - **Time Setting** - Input the time (milliseconds) required in the response time and interval time
 - **Instruction Preferences (Command priority selection)** - If “Screen” is selected, the screen command will be sent first. If “Matrix” is selected, the matrix command will be sent first.
 - **Input channel setting** - Set the maximum value of the input channel according to the number of channels.
 - **Port Mapping** - Set port mapping
 - **Add Protocol** - Set the string or 16 type protocol



Matrix Setting window



CONTROL AND FUNCTION

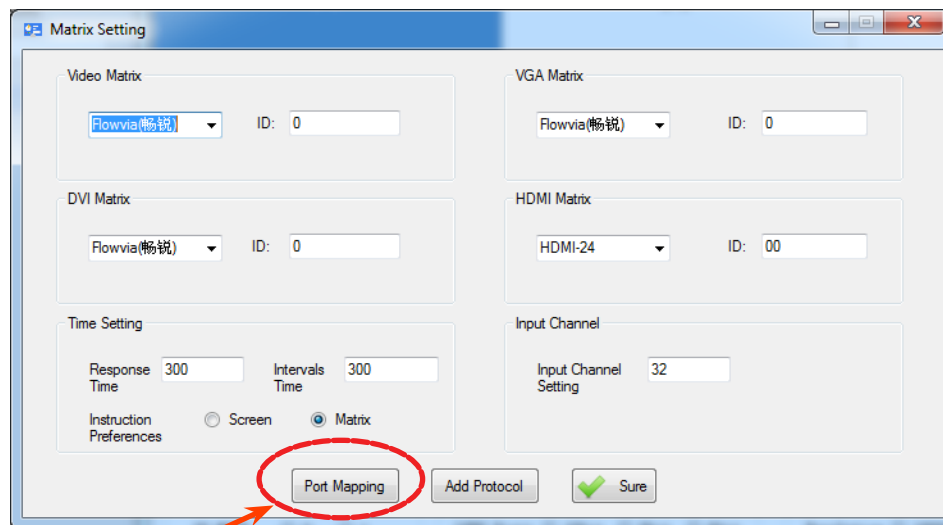
Menu Bar - Sets(S) / Matrix Setting (M) / Port Mapping

- **Set/Matrix Setting/Port Mapping**

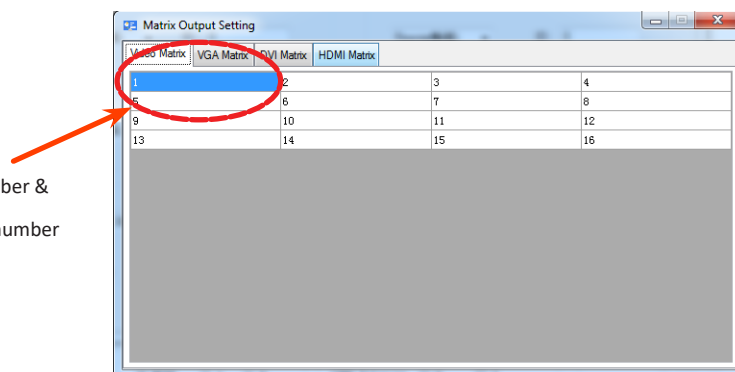
- **Matrix Output Setting** - Click the “**Port Mapping**” button on the **Matrix Setting** window.

When “**Matrix Output Setting**” window pop up, User can change the output via Video, VGA , DVI and HDMI matrix.

1. Select the desired unit
2. When select the unit, you can type the number to change it if needed.



Matrix Setting window



Click the desired unit number &
Input the desired channel number

Matrix Output Setting window

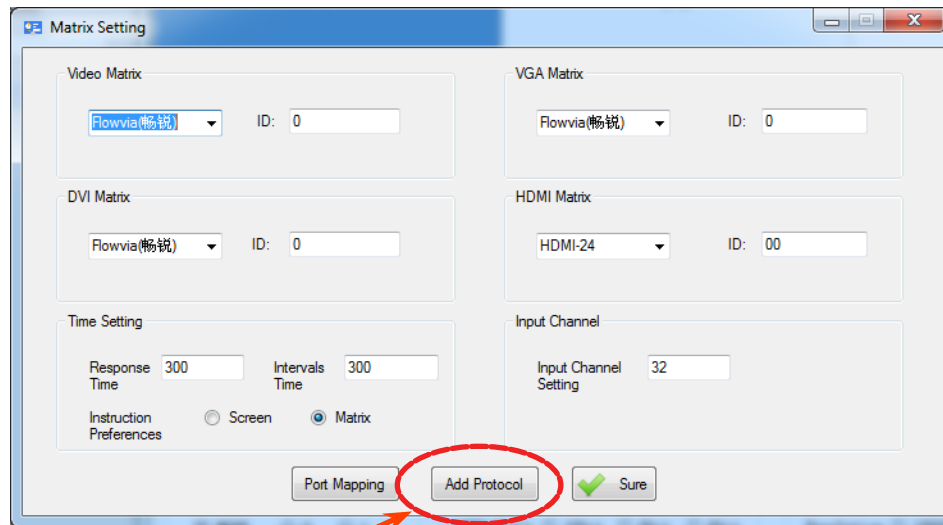
CONTROL AND FUNCTION

Menu Bar - Sets(S) / Matrix Setting (M) / Add Protocol

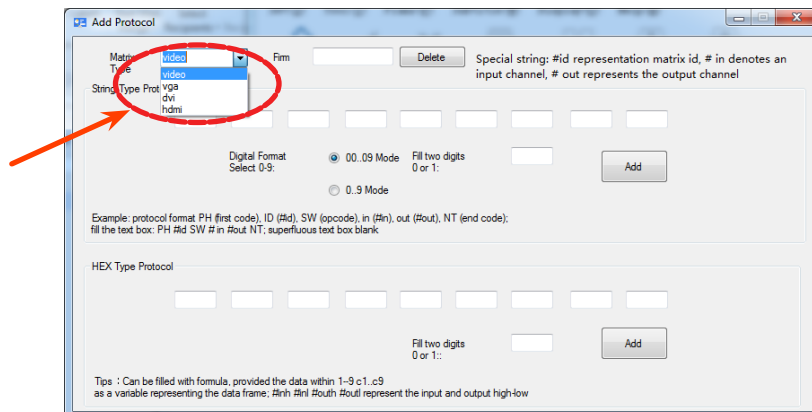
- **Set/Matrix Setting/Port Mapping**

- **Add Protocol** - Click the “Add Protocol” button on the **Matrix Setting** window.

When “Add Protocol” window pop up, User can add protocol by string or 16 digit (HEX) type.



Matrix Setting window



Matrix type select

Add Protocol window

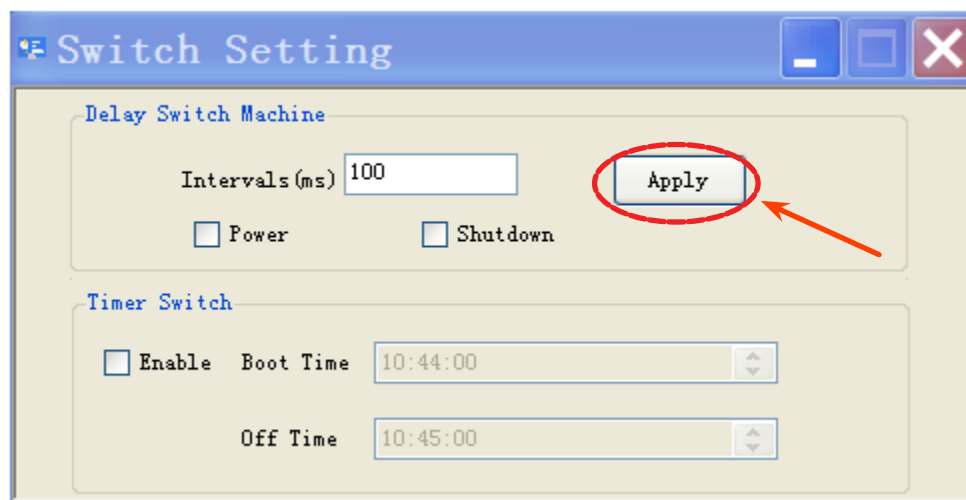
CONTROL AND FUNCTION

Menu Bar - Sets(S) / Switch Setting (D)

- **Set/Matrix Setting/Switch Setting**

- **Intervals (ms)** - The interval time of 'Power and Shutdown'
- **Power** - If user want to turn on the monitor and want to delay turn-on time, please check up this.
- **Shutdown** - If user want to turn off the monitor and want to delay turn-off time, please check up this.
- **Time Switch** - If user want to set up the automatic turn ON/OFF time, please check up this and set the time.

To apply this setup, please click the 'Apply' button



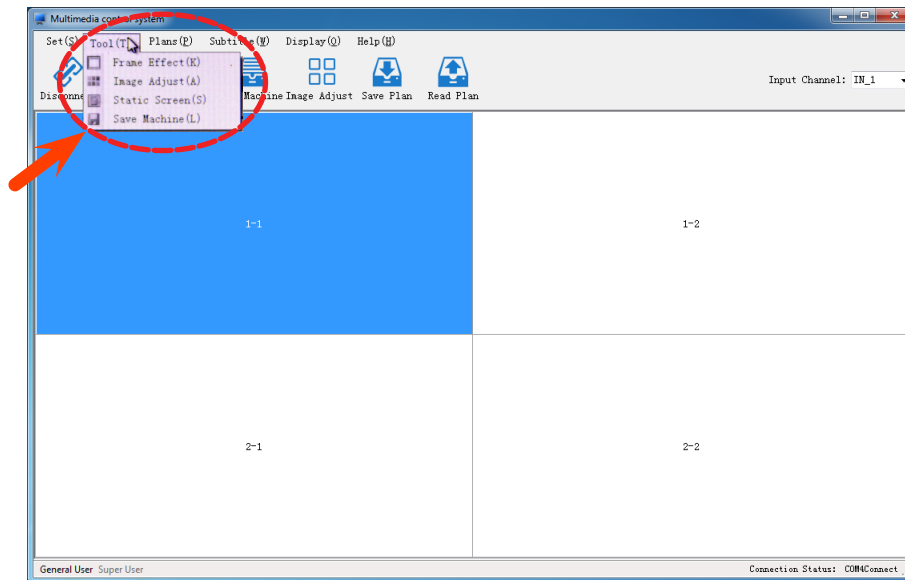
Switch Setting window

CONTROL AND FUNCTION

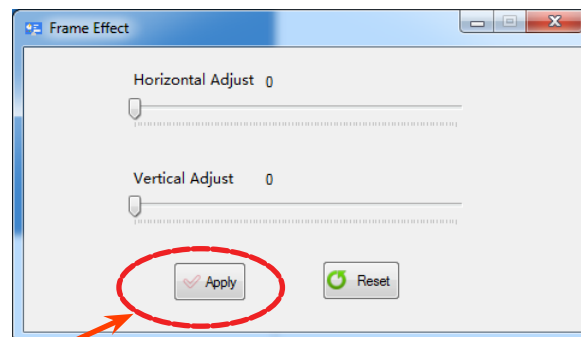
Menu Bar - Tool (T) / Frame Effect (K)

- The function of **Frame Effect** is to adjust the line and frame of the input source through the daisy chain signal
- **Tool/Frame Effect**
 - **Horizontal Adjust** - Drag the bar to adjust horizontal size of selected monitor
 - **Vertical Adjust** - Drag the bar to adjust vertical size of selected monitor

⚠ Caution : The Connection should be 'ON' before set up the **Frame Effect**. If the connection is offline, user cannot set up **Frame Effect**.



Tool/Frame Effect menu



Click to save the value

Frame Effect window

CONTROL AND FUNCTION

Menu Bar - Tool (T) / Image Adjustment (A) / Color Adjust (cont)

- Tool/Image Adjustment/Color Adjust

1) Image

- **Brightness** - Adjust the brightness of the screen image
- **Contrast** - Adjust the brightness of the screen image
- **Saturation** - Adjust the depth of the image color
- **Sharpness** - Adjust the clarity and focus of the screen image

2) Color Temperature

- **Gain-red** - Adjust the color temp. to brighten the red component, mainly affecting the white field & bright field
- **Gain-green** - Adjust the color temp. to brighten and balance the green component, mainly affecting the white field & bright field
- **Gain-blue** - Adjust the color temp. to brighten the blue component, mainly affecting the white field & bright field
- **Compensation-Red** - Adjust the color temp. and dark balance red component, mainly affecting dark & dark fields
- **Compensation-Green** - Adjust the color temp. and dark balance green component, mainly affecting dark & dark fields
- **Compensation-blue** - adjust the color balance dark balance blue component, mainly affecting dark & dark field

To apply this setup, please click the 'Save Adjust' button

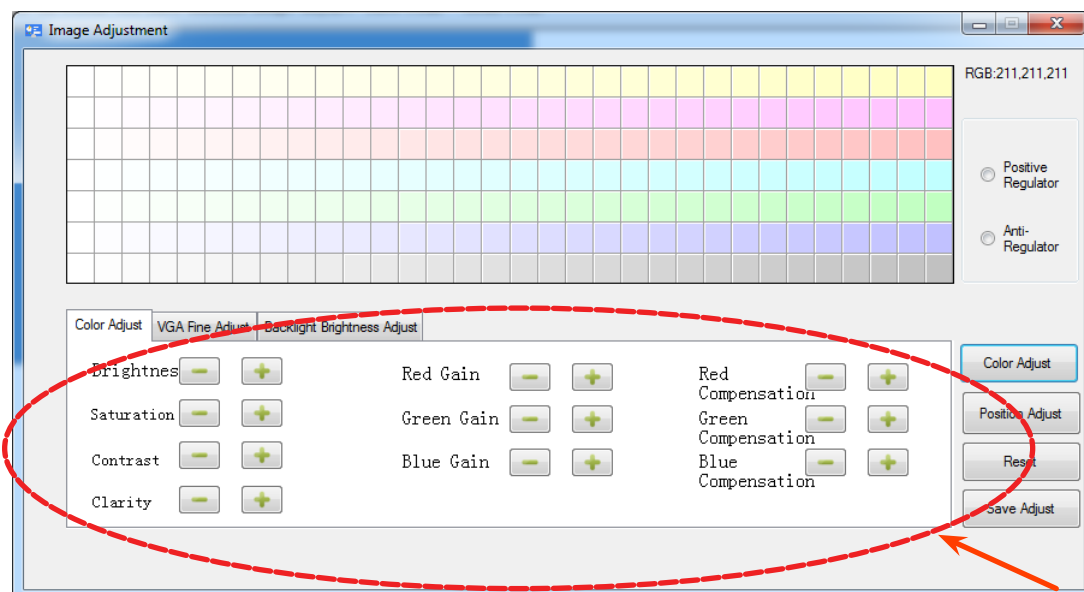


Image Adjustment window

CONTROL AND FUNCTION

Menu Bar - Tool (T) / Image Adjustment (A) / Color Adjust (cont)

- **Tool/Image Adjustment/Color Adjust**

3) Swatch


Administrator can enter this adjustment area from the image adjustment option of the control software. After switching all the screens to the unified channel, the signal picture is preferably a full white field signal.

- Principle Description

- A reference screen will be found on the splicing screen
- The color temperature of the remaining screens will be adjusted to be the same as the reference screen, so that the color temperature effect is consistent.

- Adjust instructions

- Determine whether the model of the non-reference screen is unified with the reference screen
- Determine whether the backlight brightness of the screen can be consistent with the reference screen.
If the brightness is not enough, the backlight brightness or the brightness and contrast parameters can be debugged. Make its brightness as close as possible to the reference screen.
- Prepare to adjust the color temperature of the non-reference screen
- Select the color similar to the color reference screen in the color table
- Manually adjust the color temperature gain/compensation of red, green and blue (the gain mainly affects the bright field, and adjusts the gain as much as possible under the white field)
- The RGB value - the compensation mainly affects the dark field and the fine-adjusted arrival color reference screen is basically consistent.

 **Note :** The positive and negative adjustments are the opposite of the color of the corresponding color table, that is to say, the color of the positive adjustment screen and the color of the color palette are the same. The color and the color palette of the reverse adjustment screen are opposite. The default is the reverse adjustment setting. . In addition, you can pay attention to the value of the mouse hovering to the corresponding color table block. This value shows the complementary principle of red, green, blue, yellow and purple.

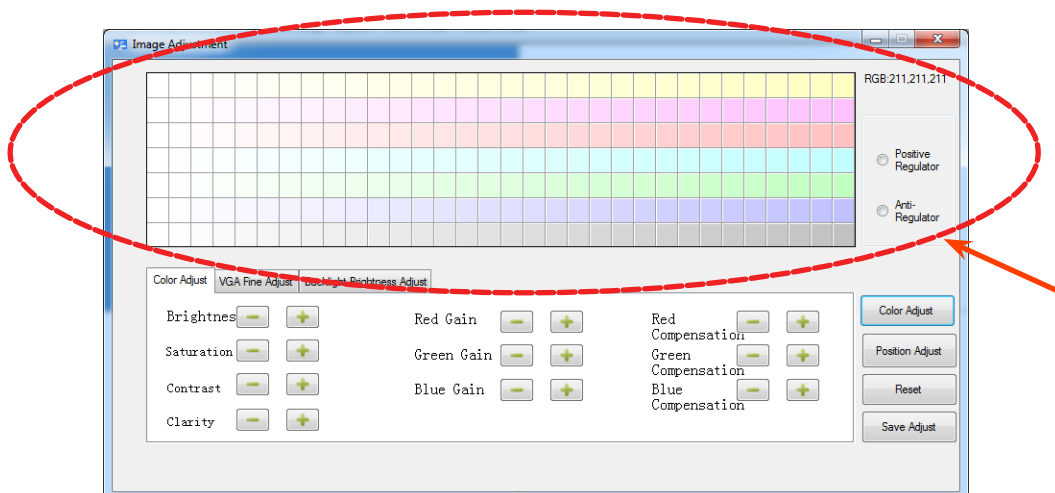


Image Adjustment window

CONTROL AND FUNCTION

Menu Bar - Tool (T) / Image Adjustment (A) / VGA Fine Adjust

- **Tool/Image Adjustment/VGA Fine Adjust**

- **Display Position**

- i) Horizontal Position - Adjust the horizontal picture position
- ii) Vertical Position - Adjust the vertical picture position
- iii) Clock - Adjust the number of horizontal picture elements
- iv) Phase - Adjust the vertical noise of screen image

These parameters are related to the "location automatic adjustment" parameter under the PC channel. If the automatic adjustment cannot see the user's demand, user can manually adjust such parameters.

In general, this manual setup is not recommended.

- **Image Color** - Gain-red/green/blue & Compensation-Red / Compensation-Green / Compensation-blue

The system automatically adjusts the image color and display position

- ⓘ **Note** : The "**Automatic Adjustment**" process will need about 3 ~ 6 seconds. Please do not perform other operations or turn off the power after clicking.
- ⓘ **Note** : The parameters of **VGA Fine Adjust** in the second page, (special adjustment) can be manually adjusted.

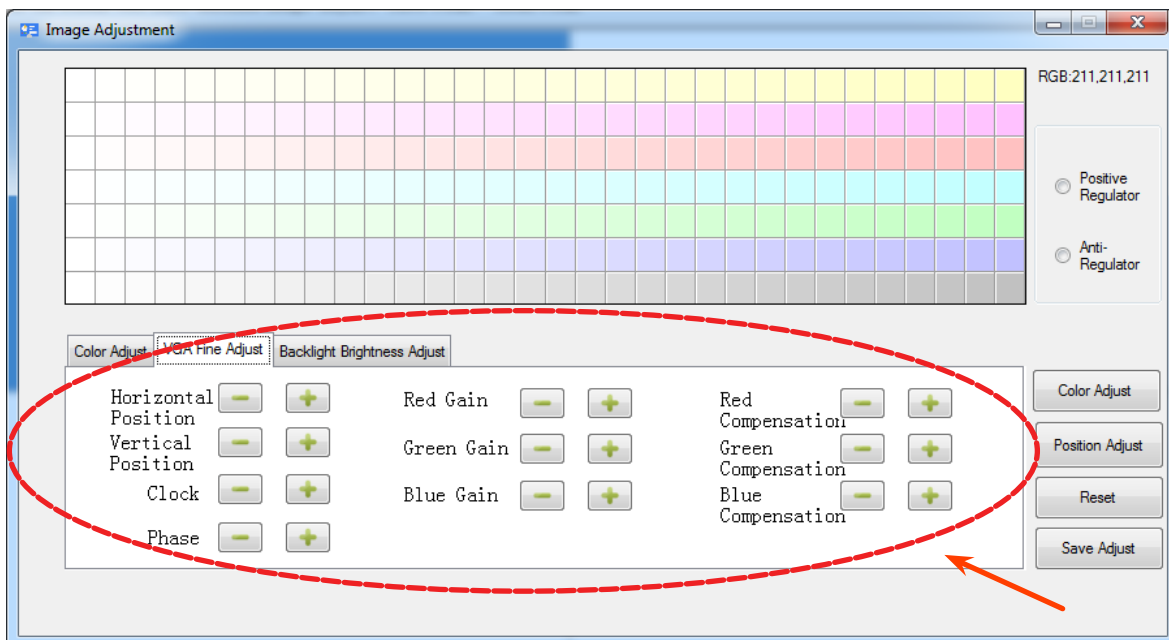


Image Adjustment/VGA Fine Adjust window


CONTROL AND FUNCTION

Menu Bar - Tool (T) / Image Adjustment (A) / Backlight Brightness Adjust

- **Tool/Image Adjustment/Backlight Brightness Adjust**
 - **Backlight Adjust** - Adjust the backlight of selected monitor
 - **PWM (Pulse Width Modulation) Adjust** - Adjust the light output of selected monitor

Tool/Image Adjustment/

- **Color Adjust** - Click this button to adjust color automatically.
- **Position Adjust** - Click this button to adjust position of selected monitor automatically.
- **Local Reset** - Click this button to restore all parameters of the selected monitor to the factory-default.
- **Save Adjust** - Click this button to save all adjusted parameters of the selected monitor.

 **Note** : The “**Local Reset**” process will need about 3~4 seconds. Please do not perform other operations or turn off the power during this process, after clicking.

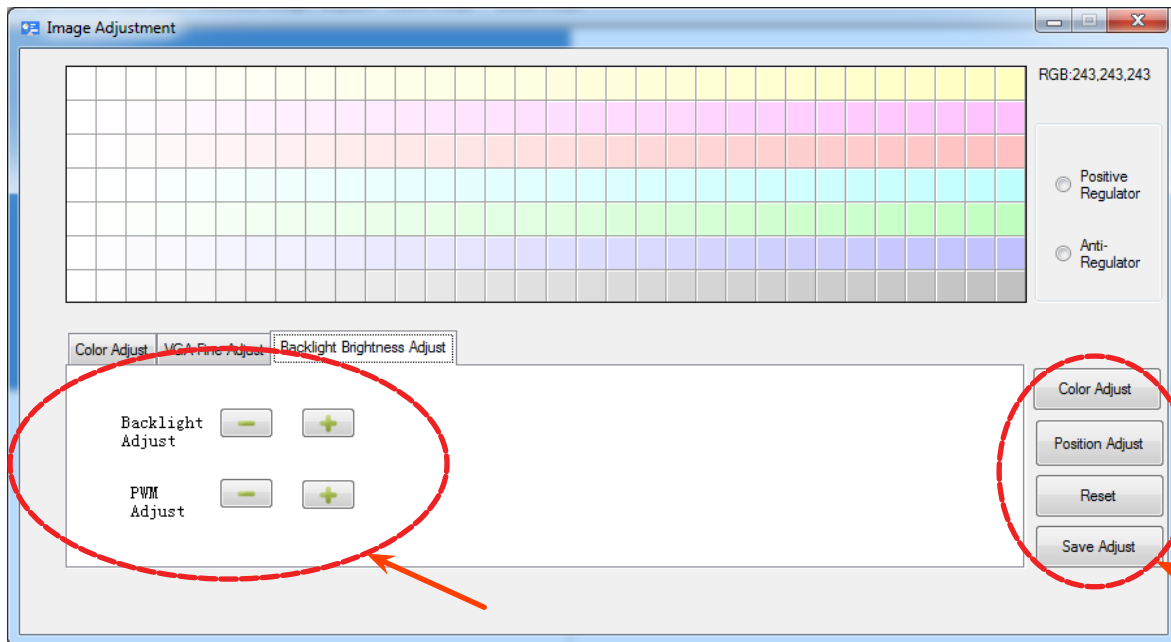


Image Adjustment/Backlight Brightness Adjust window

CONTROL AND FUNCTION

Menu Bar - Tool (T) / Image Adjustment (A) / Backlight Brightness Adjust

- **Tool/Image Adjustment/Backlight Brightness Adjust**

1) Front End Brightness Gain

- **Red** - Adjust the color temperature to brighten the red component
- **Green** - Adjust the color temperature to brighten the green component
- **Blue** - Adjust the color temperature to brighten the blue component

These parameters are related with the automatic color adjustment under the PC channel. If the automatic adjustment cannot see its needs, it can be manually adjusted. The gain represents the parameters of the bright field. The main performance is the improvement of the contrast. It is generally not recommended to be adjusted by manual.

2) Front End Brightness Compensation

- **Red** - Adjust the color temperature to compensate for the red component
- **Green** - Adjust the color temperature to compensate for the green component
- **Blue** - Adjust the color temperature to compensate for the blue component

These parameters are related with the automatic color adjustment under the PC channel. If the automatic adjustment cannot see its needs, it can be manually adjusted to compensate for the parameters representing the dark field. The main performance is the improvement of brightness. Generally, it is not recommended to be adjusted by manual.

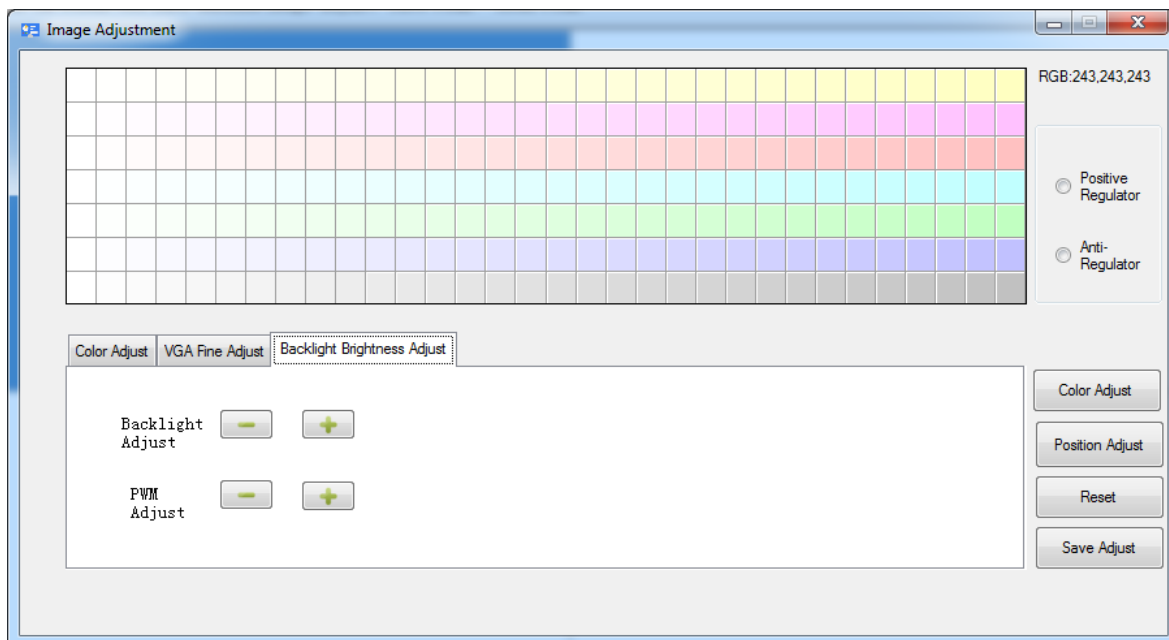


Image Adjustment/Backlight Brightness Adjust window

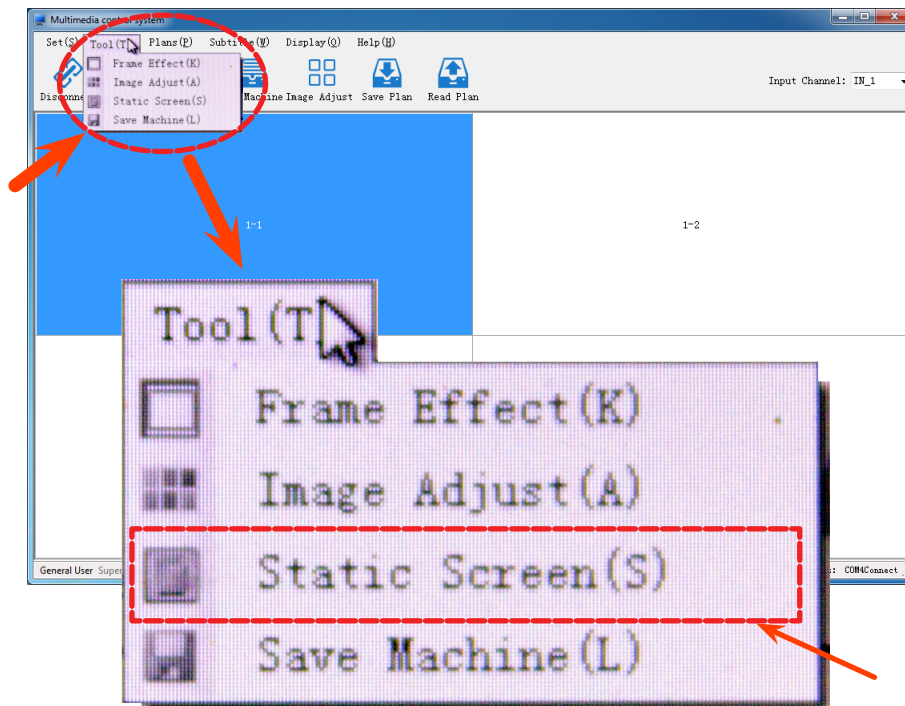
CONTROL AND FUNCTION

Menu Bar - Tool (T) / Static Screen (S)

- **Tool/Static Screen**

- This function is to keep a static image on monitor
- If click the '**Static Screen**' menu, the video wall display will be paused. To restore 'paused display', click again '**Static Screen**' menu.

⚠ Caution : The Connection should be 'ON' before using **Static Screen**. If the connection is offline, user cannot use **Static Screen** function.



Tool/Static Screen menu

CONTROL AND FUNCTION

Menu Bar - Tool (T) / Save Machine (L)

- **Tool/Save Machine**

- If click the 'Save Machine' on the menu, the current setup will be saved into the local area of computer.

⚠ Caution : The Connection should be 'ON' before using **Save Machine** function. If the connection is offline, user cannot **save** the current setup into local area.

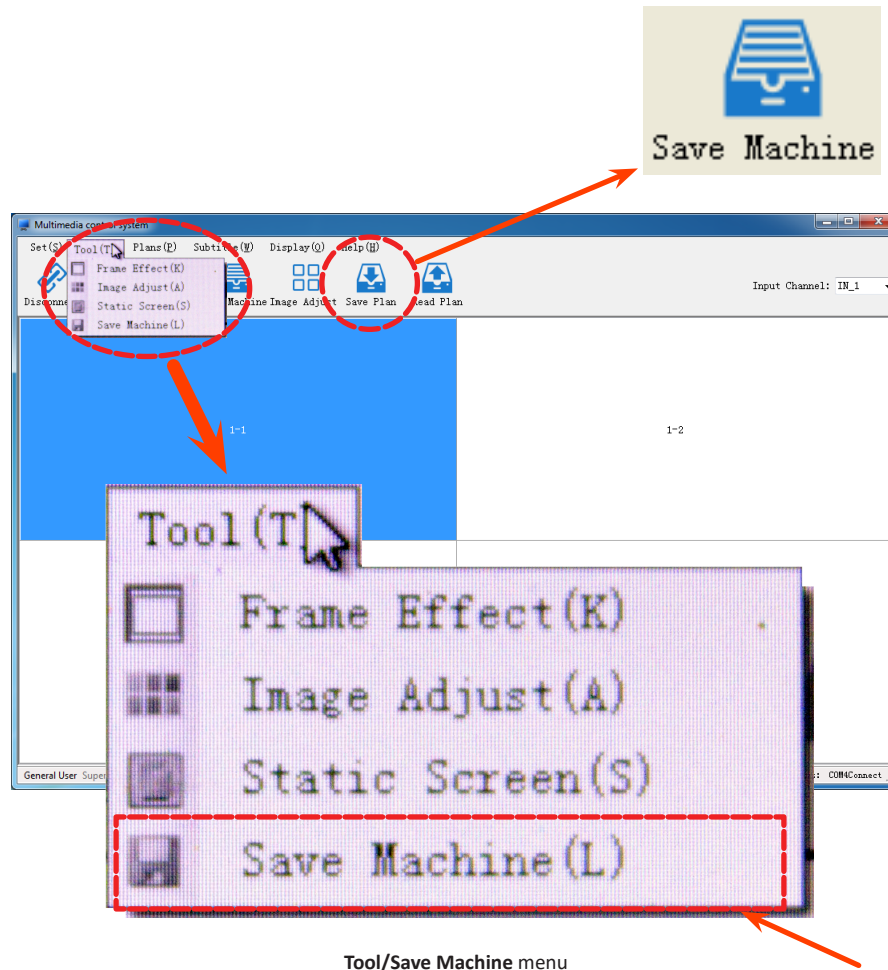


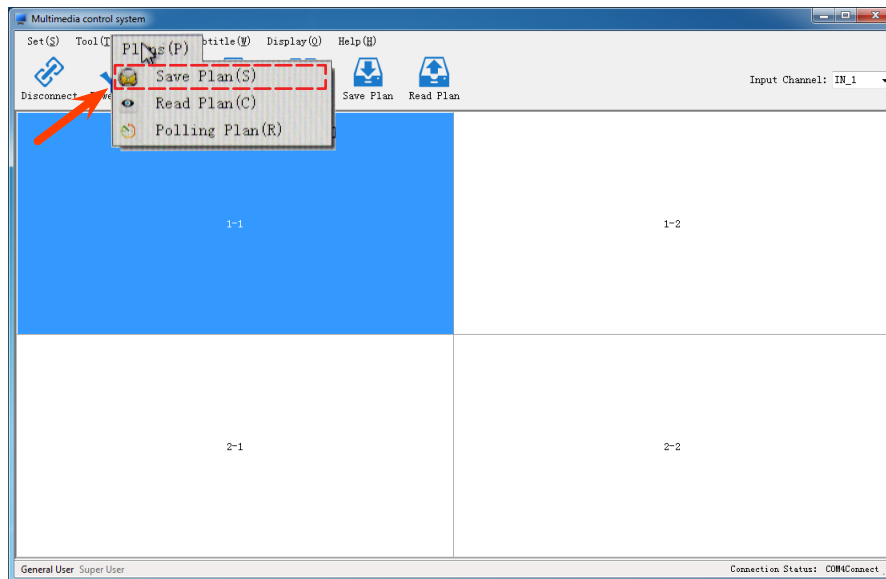
Image Adjustment/Backlight Brightness Adjust window

CONTROL AND FUNCTION

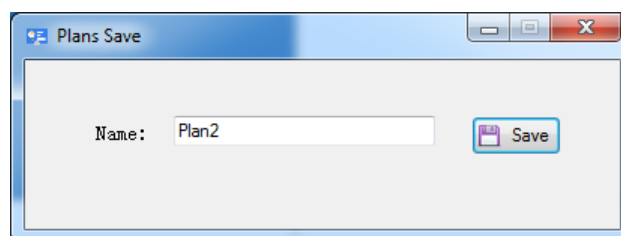
Menu Bar - Plans (P) / Save Plan (S)

- **Tool/Plans**
 - Plan has 3 functions - saving the plan, retrieving the plan, and pre-planning
- **Tool/Plans/Save Plan**
 - **Save Plan** - user can only save up to 16 pre-plan. If the saved plan is already full, the program will show “pre-full” message window when you try to save. If you want to save the current plan, you need to delete some of existing plans.
 - **Saved Plan** - user can check the saved plan. If the plan was saved correctly, user can see the saved plan on "Polling Plan" and "Read Plan" window after saving. Also, user can delete or rename saved plans in anytime.

⚠ Caution : The Connection should be 'ON' before using **Plan** function. If the connection is offline, user cannot use **Plan** function.



Plans menu



Plans/Save Plan window

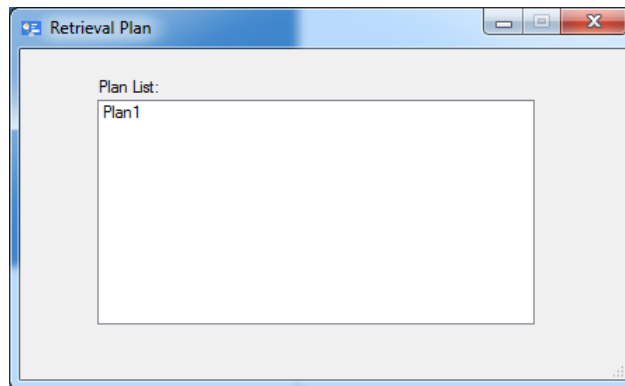
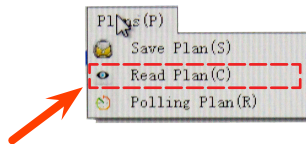
CONTROL AND FUNCTION

Menu Bar - Tool (T) / Read Plan (C)

- **Tool/Plans/Read Plan**

- **Read Plan** - user can retrieve/load the saved plan. If user click the '**Read Plan(C)**,' '**Retrieval Plan**' window popup and user can select one of saved plans (in the list). If user right-click one of saved plans, user can delete or rename the selected plan.

! Caution : The Connection should be 'ON' before using **Read Plan** function. If the connection is offline, user cannot use **Read Plan** function.



Plans/Read Plan window

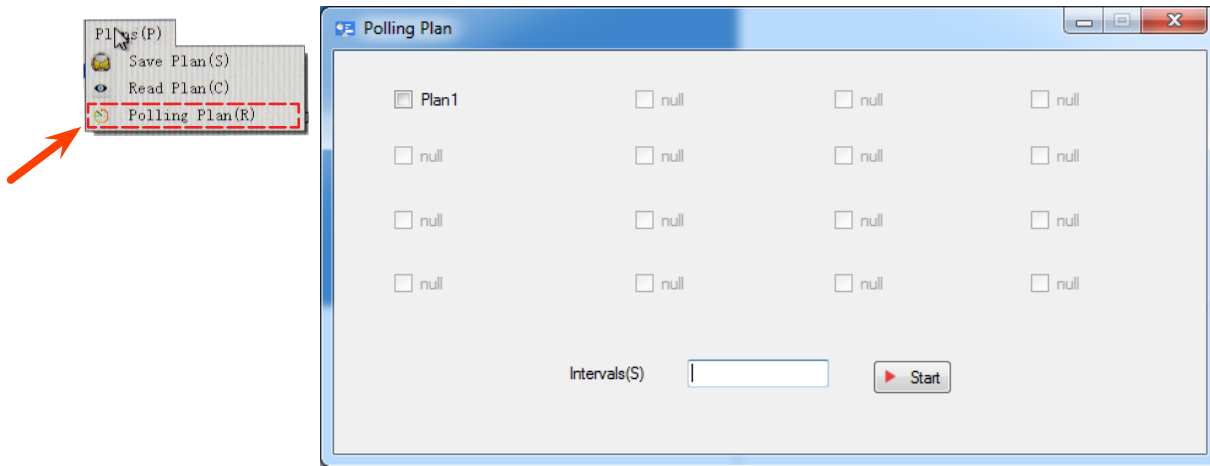
CONTROL AND FUNCTION

Menu Bar - Tool (T) / Polling Plan (R)

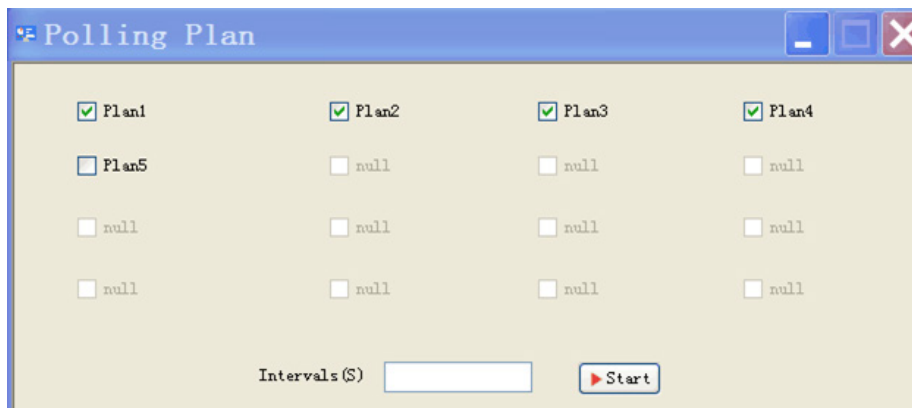
- **Tool/Plans/Polling Plan**

- **Polling Plan** - user can swatch saved plans periodically.

- 1) Click the '**Polling Plan(R)**,' '**Polling Plan**' window popup.
- 2) Check the desired plans (which will be displaying) and type the time intervals (seconds).
- 3) Click the 'Start' button to run periodical display of saved plans.



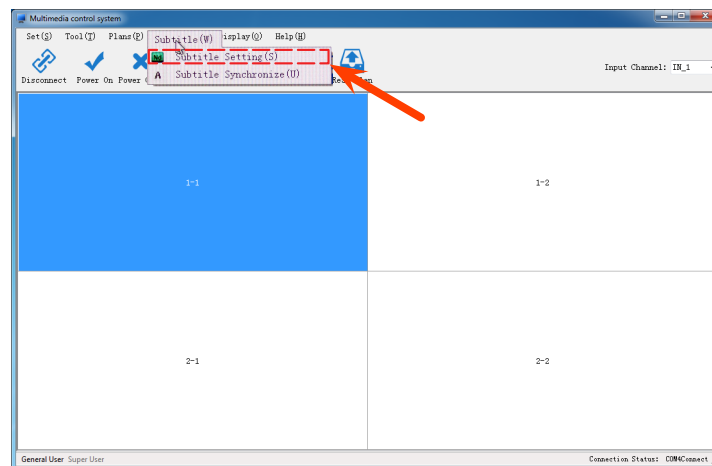
Plans/Polling Plan window



CONTROL AND FUNCTION

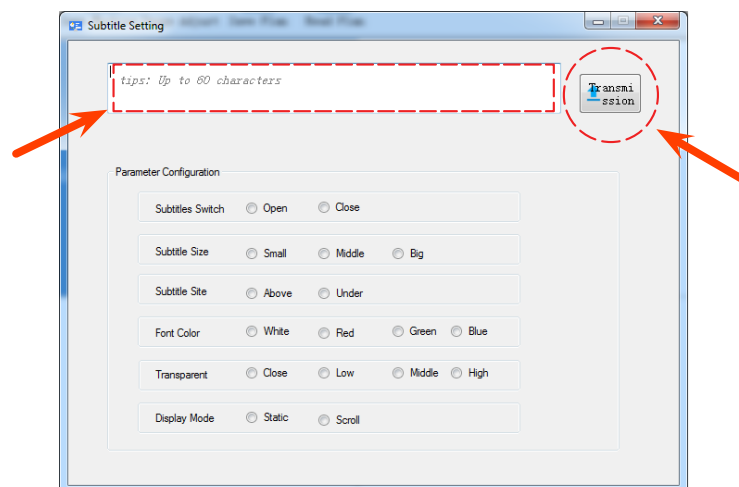
Menu Bar - Subtitle (W) / Subtitle Setting (S) & Subtitle Synchronize (U)

- **Tool/Subtitle/Subtitle Setting**
 - **Subtitle Setting** - user can setup custom subtitle.
 - **Subtitle Switch (Open/Close)** - switch the subtitle
 - **Subtitle Size (Small/Middle/Big)** - subtitle font size
 - **Subtitle Site (Above/Under)** - subtitle display location
 - **Font Color (White/Red/Green/Blue)** - subtitle font color
 - **Transparent (Close/Low/Middle/High)** - subtitle text transparency setup. 'Close' is solid color.
 - **Display Mode (Static/Scroll)** - select displaying type of subtitle. 'Scroll' is the scrolling subtitle
- **Tool/Subtitle/Subtitle Synchronize**
 - **Subtitle Synchronize** - If the subtitle run unperiodically at multiple screen, please click 'Subtitle Synchronize' in the menu, to synchronize the subtitle.



Subtitle menu

Type the subtitle in this area



To save and run Subtitle parameters, click this button

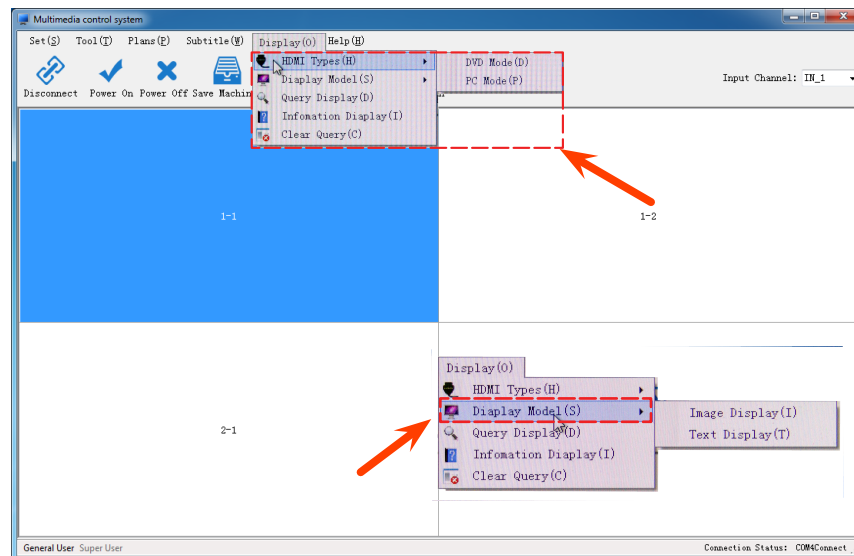
Subtitle/Subtitle Setting window

CONTROL AND FUNCTION

Menu Bar - Display (O) / HDMI Types (H) & Display Mode (S) & Information Display (I)

- **Tool/Display/HDMI Type**
- **HDMI Type** - user can select a HDMI display quality between **DVD** and **PC** modes
- **Tool/Display/Display Mode**
- **Display Mode** - user can select a display mode between **Image** and **Text** preferred type
- **Tool/Display/Information Display**
- **Information Display** - user can display the hardware information of selected monitor

! Caution : The Connection should be 'ON' before using **Display** function. If the connection is offline, user cannot use **Display** function.

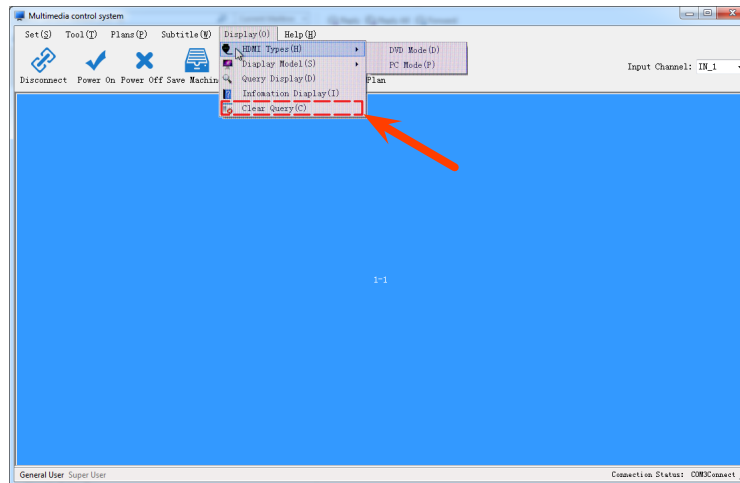


Display/HDMI Type & Display Mode menu

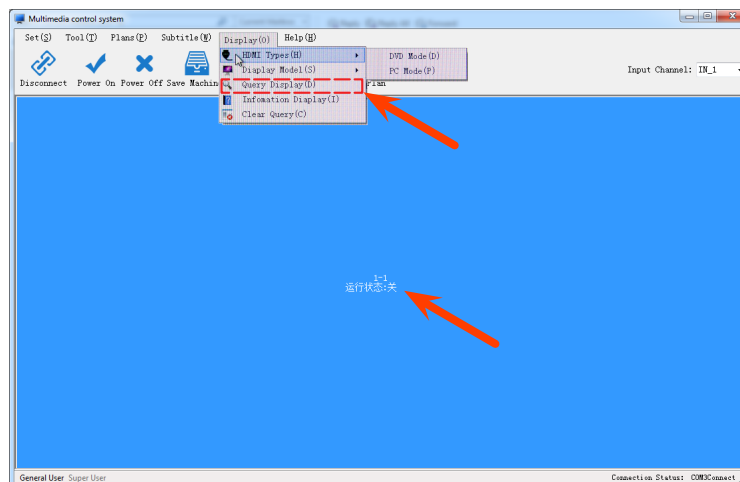
CONTROL AND FUNCTION

Menu Bar - Display (O) / Query Display (D) & Clear Query (C)

- **Tool/Display/Query Display**
 - **Query Display** - user can show status, temperature & running time of selected monitor. If this program cannot get the data from selected monitor, it means this program cannot communicate with monitor. In case, please check the cable connection or contact to ViewZ (some of model cannot use this function)
- **Tool/Display/Clear Display**
 - **Clear Display** - user can delete/clear the displayed query information.



Display/Clear Query window

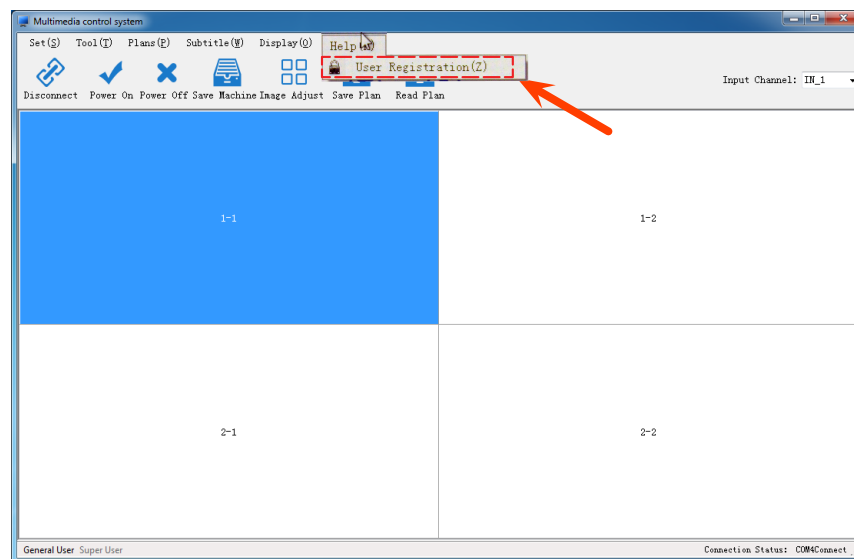


Display/Query Display window

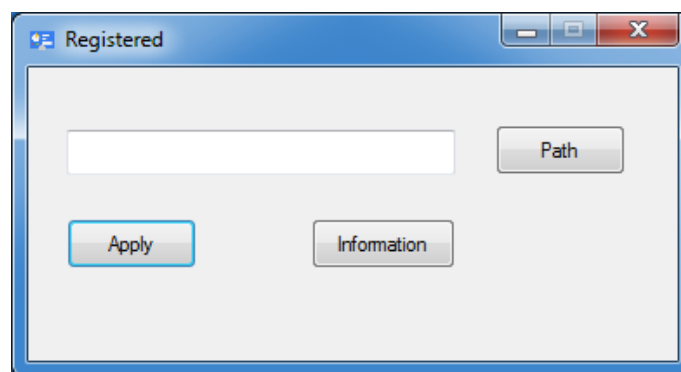
CONTROL AND FUNCTION

Menu Bar - Help (H) / User Registration (Z)

- **Tool/Help/User Registration**
 - **User Registration** - user(administrator) can create sub-user accounts



Help/User Registration menu



Help/User Registration window

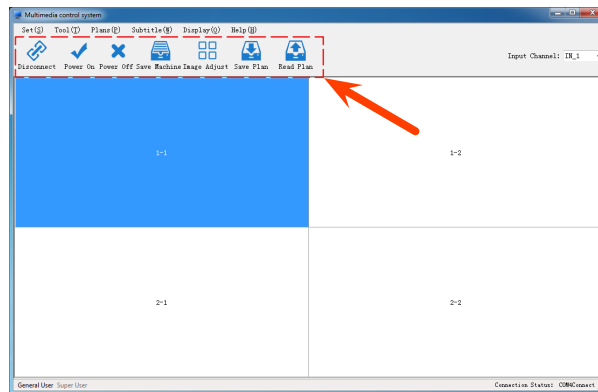
CONTROL AND FUNCTION

Tool Bar

- Tool Bar**

- The Tool Bar is a quick access toolbar that contains a set of commands that are independent of the function on the menu that is currently displayed.

Caution : The Connection should be 'ON' before using **Tool Bar** function. If the connection is offline, user cannot use **Tool Bar** function.



Tool Bar



Connect / Disconnect

To connect between monitor and computer, user need to connect the serial port, and the software can be communicated with the monitor. Set up the communication and matrix before opening the connection.



Power On

Turn on the selected monitor



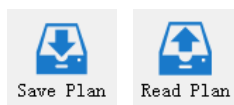
Power Off

Turn off the selected monitor



Image Adjust / Save Machine

About the function of these, please refer to page 13 for **Image Adjust** and page 19 for **Save Machine**



Save / Read Plan

About the function of these, please refer to page 20

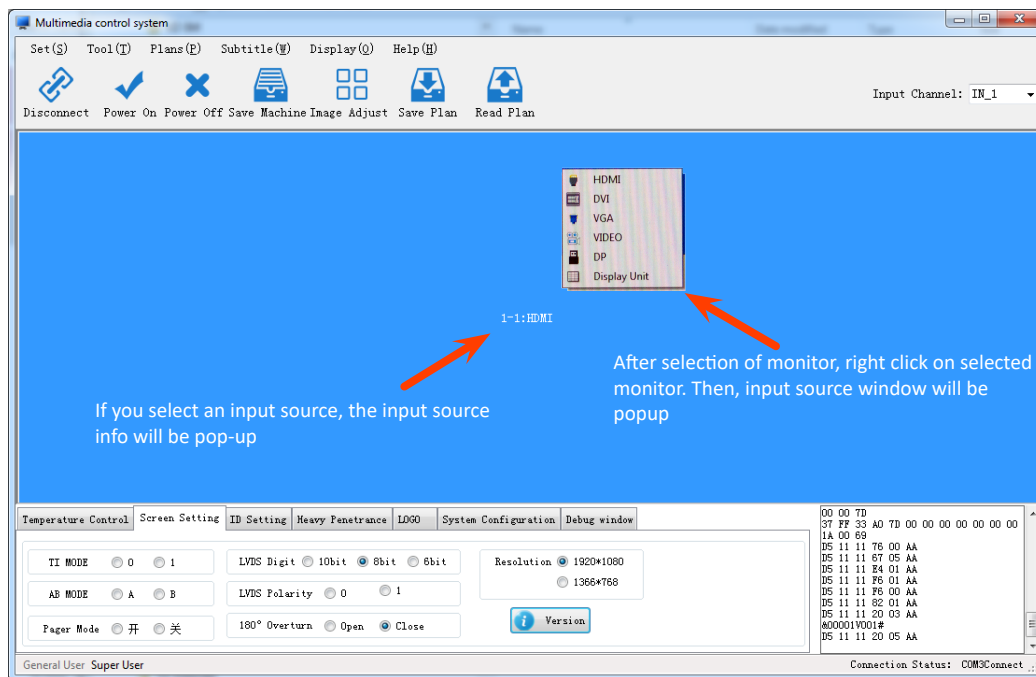
CONTROL AND FUNCTION

Operation Area

• Operation Area

- User can easily change the input source at the computer (which installed video wall system software)
 - 1) Click the monitor which you want to change the source
 - 2) Right-click the selected monitor, then input source window will popup
 - 3) Click one of input sources, then selected screen will show the input source info & will display chosen input source

⚠ Caution : The Connection should be 'ON' before using **Operation Area**. If the connection is offline, user cannot use **Operation Area**



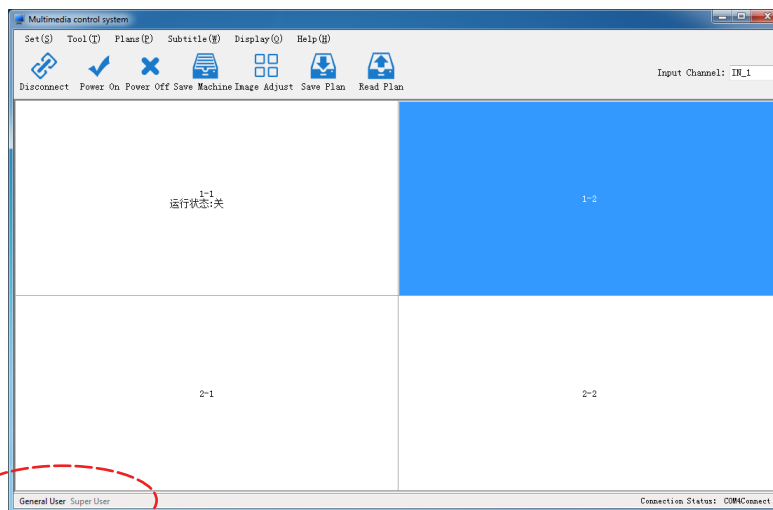
Operation Area - 1 x 1 window

CONTROL AND FUNCTION

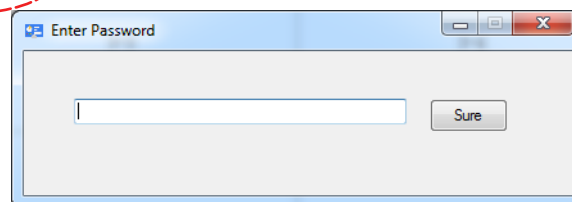
Administrator (Super User) Tool Bar

- Administrator Tool Bar**

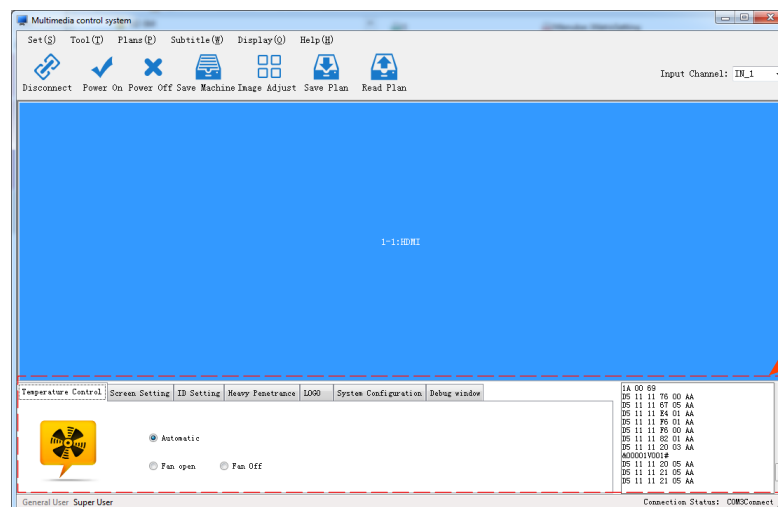
- The Administrator (Super User) Tool Bar is to manage more professional status of monitors. This administrator tool bar let user manage monitor temperature, monitor display, video wall system configuration, heavy penetrance, logo display, system configuration and debug mode.



Double Click this area to launch the super admin menu



After double click on that area, the above window will popup. The default password is '**123321**'.



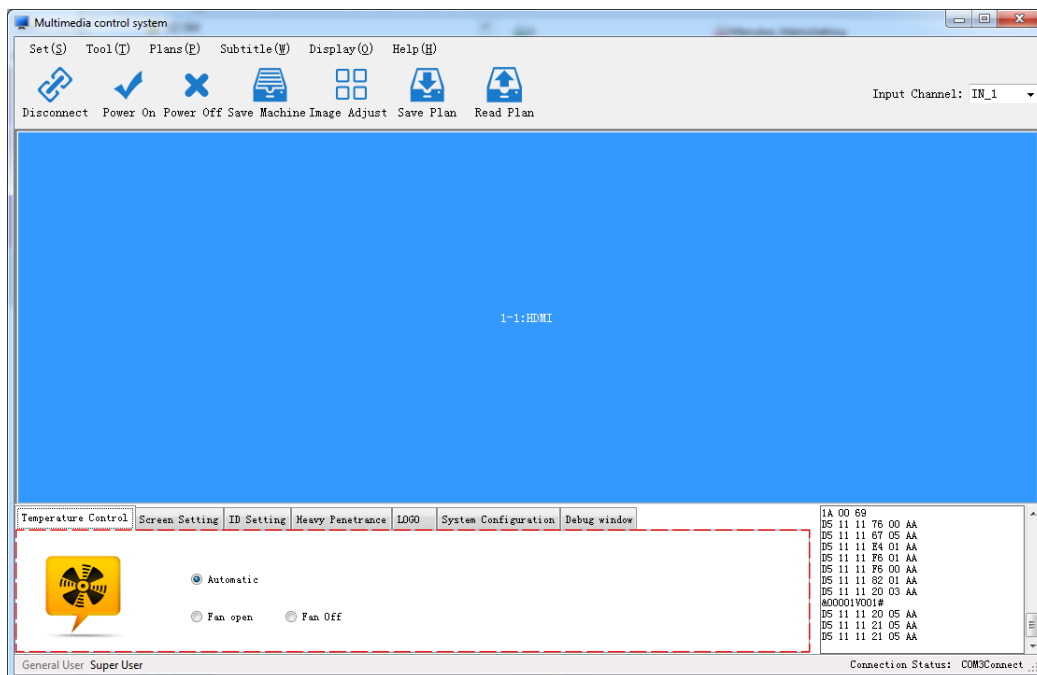
Another toolbar will be displayed at the bottom

Administrator (Super User) tool bar

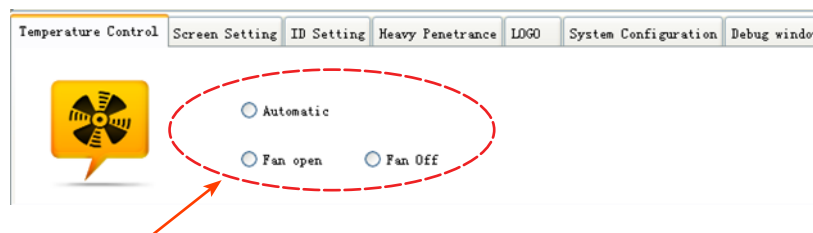
CONTROL AND FUNCTION

Administrator Tool Bar / Temperature Control

- **Administrator Tool Bar/Temperature Control**
 - This section let user control the cooling fan of selected monitor
 - **Automatic** - The system of monitor automatically turn on/off the fan of selected monitor based on the internal temperature of monitor. The system has the high/low temperature value and these values let the system turn on/off the fan.
 - **Fan Open** - Turn on the fan of selected monitor after turning on power.
 - **Fan Off** - Turn off the fan of selected monitor



Administrator Tool Bar / Temperature Control tool bar



Just click the radio button to process its function

CONTROL AND FUNCTION

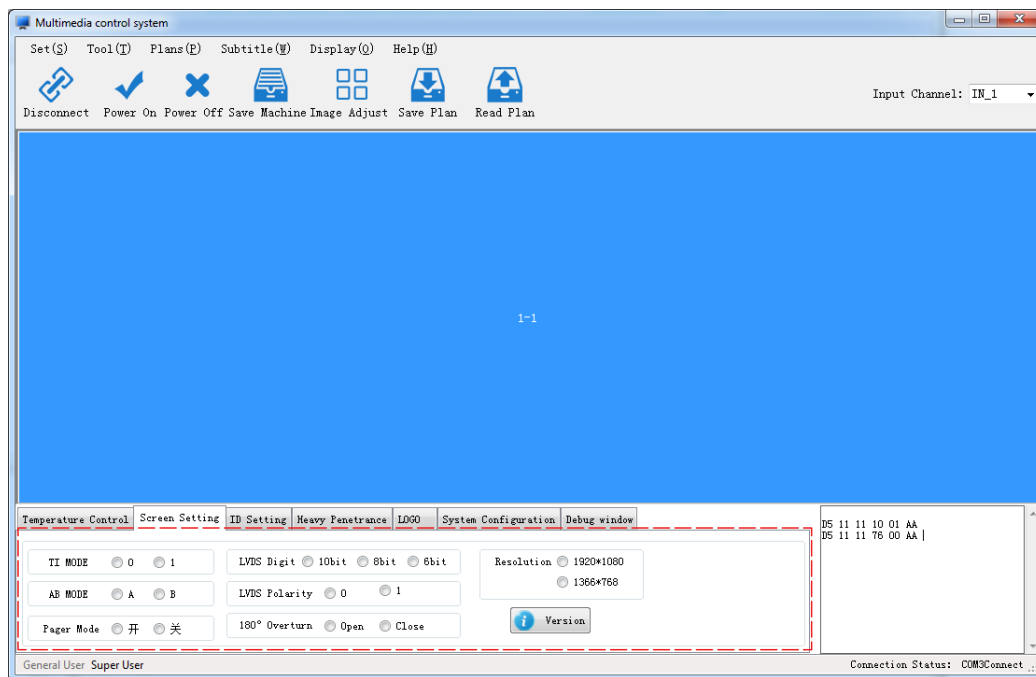
Administrator Tool Bar / Screen Setting

Administrator Tool Bar/Screen Setting

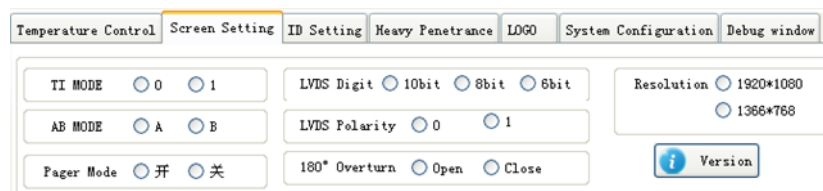
- This section let user handle LVDS (Low Voltage Different Singaling) video-signal output of selected monitor.
- This section let user do the aging mode (which must be working without input signal), it has a flashing of Red/ Green/Blue/White/Black/Other colors - this function does not need to shut down monitor.
- By configuring the screen parameters, you can increase the type of screen parameters and flip. The screen parameter switch will restart from black screen, please be aware. Switching flips can be used normally.

Caution : Under normal condition, please do not modify anything in **Screen Setting**. The Screen Setting can make abnormal display. If you need to edit this, please contact to ViewZ or authorized personel.

If user edit/modify this without authorization, user will lose warranty.



Administrator Tool Bar / Screen Setting tool bar



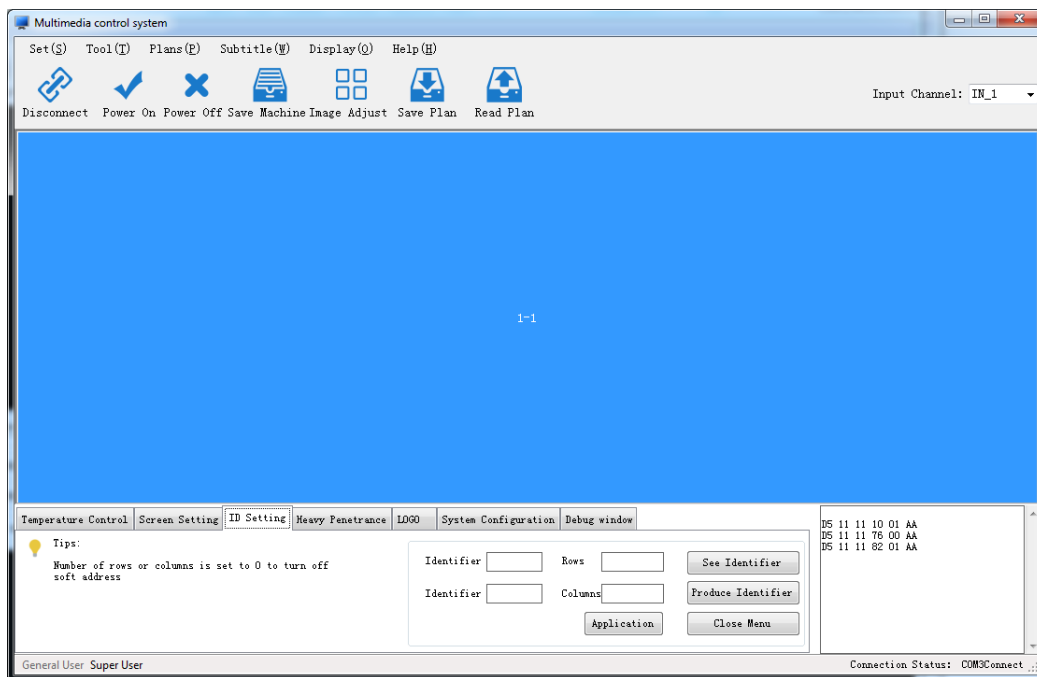
Please do not edit this without authorization.

CONTROL AND FUNCTION

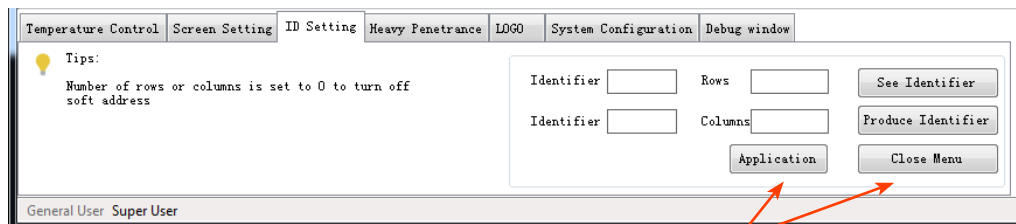
Administrator Tool Bar / ID Setting

- **Administrator Tool Bar/ID Setting**

- This section let user link between selected monitor and VideoScreen software
- **Identifier (Top)** - The monitor's own identification code. User can see this on selected monitor.
- **Identifier (Bottom)** - The monitor's own identification code. User can see this on selected monitor.
On the selected monitor, user can see 'xxx-xxx' identification code. The first 'xxx' digit need to be typed in the top-identifier and the second 'xxx' digit need to be typed in the bottom identifier.
- **Rows** - The number of row position in the video wall
- **Columns** - The number of column position in the video wall
- **Application** - After typing 2 identifiers, rows and columns, **user should click this button to apply it.**
- **See Identifier** - Click this button to display the identifier info of selected monitor setup by monitor side
- **Produce Identifier** - Click this button to create the new identifier info of selected monitor
- **Close Menu** - **Click this button to save all setting.** User should click this button before quitting **ID Setting**



Administrator Tool Bar / ID Setting tool bar

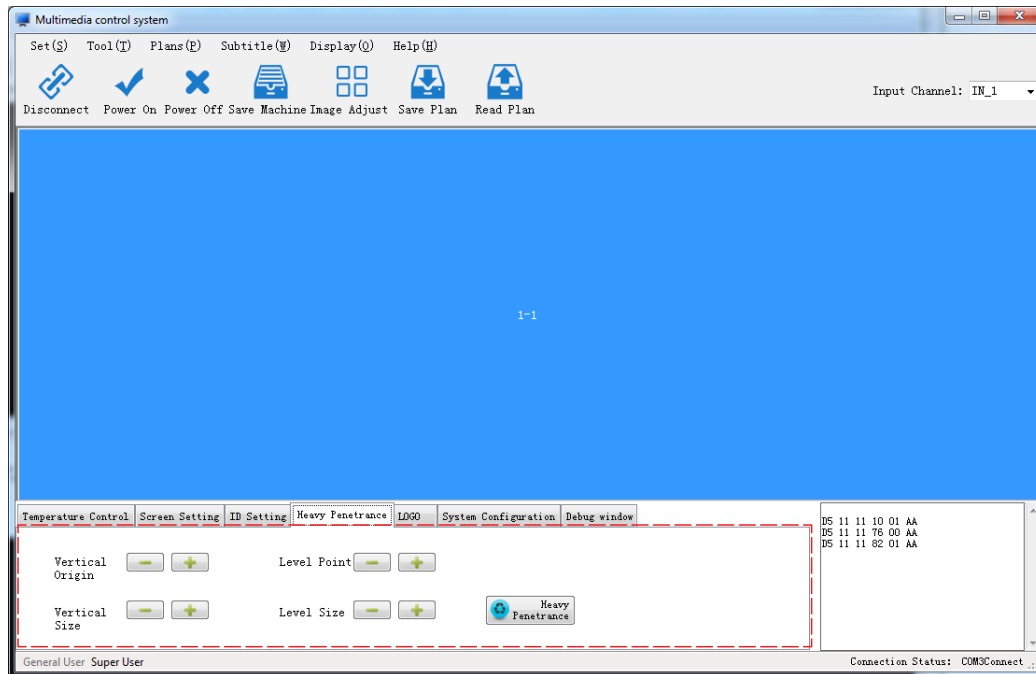


Application & Close Menu buttons should be clicked before quitting ID Setting.

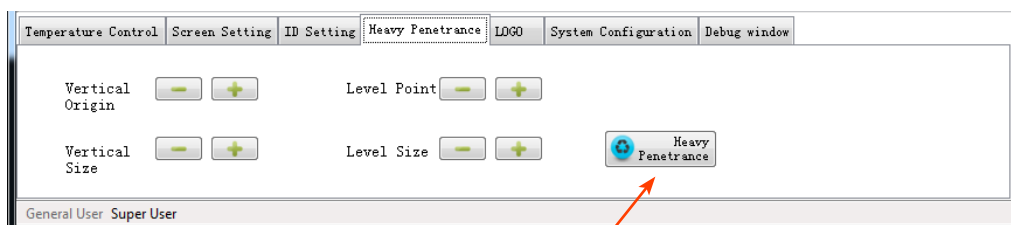
CONTROL AND FUNCTION

Administrator Tool Bar / Heavy Penetrance

- **Administrator Tool Bar/Heavy Penetrance**
 - This section let user adjust the size of the screen display that has been trimmed and processed like CVBS
 - **Vertical Origin (+, -)** - Adjust vetical starting point of display
 - **Vertical Size (+, -)** - Adjust vetical size of display
 - **Level Point (+, -)** - Adjust horizontal starting point of display
 - **Level Size (+, -)** - Adjust horizontal size of display
 - **Heavy Penetrance** button - Restore default setup value



Administrator Tool Bar / Heavy Penetrance tool bar



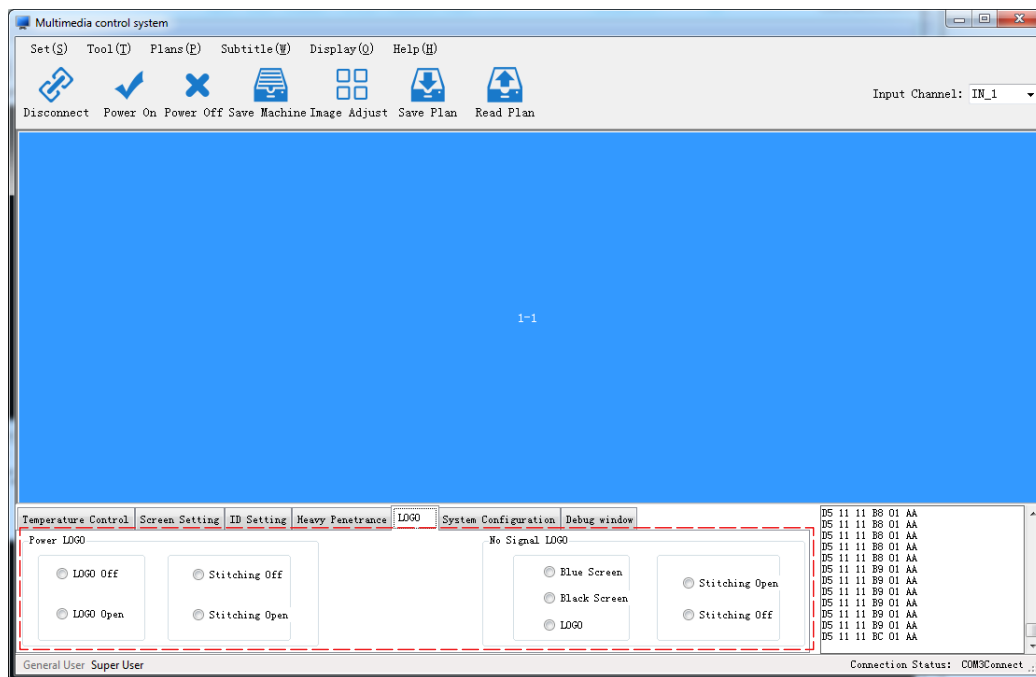
RESET button

CONTROL AND FUNCTION

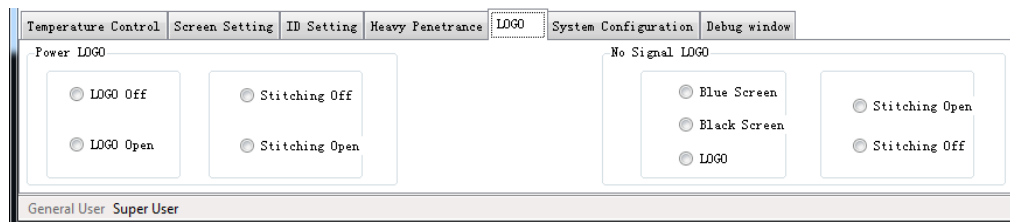
Administrator Tool Bar / Logo

- **Administrator Tool Bar/Logo**

- This section let user handle the power-on & no-signal message
- Power **Logo** (Off/Open) - Turn on/off the showing logo when power is on.
- Power **Logo / Stitching** (Off/Open) - Turn on/off the splicing logo on the video wall
- No Signal **Logo** (Blue Screen/Black Screen/Logo) - Select blue/black/logo screen when lost input signal
- No Signal **Logo / Stitching** (Blue Screen/Black Screen/Logo) - Turn on/off the splicing blue/black/logo screen when lost input signal



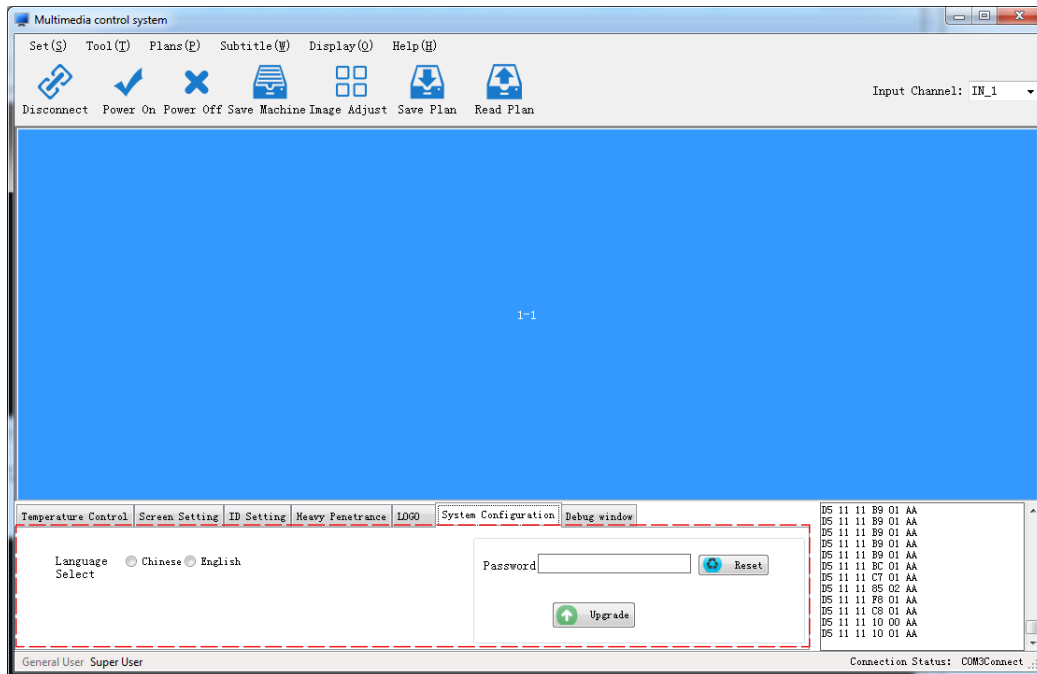
Administrator Tool Bar / Logo tool bar



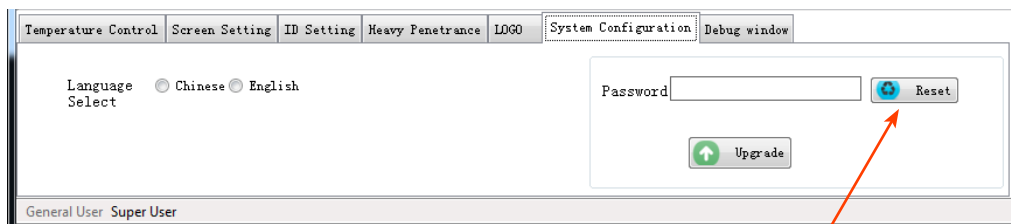
CONTROL AND FUNCTION

Administrator Tool Bar / System Configuration

- **Administrator Tool Bar/System Configuration**
 - This section let user handle Reset, Control system language and Firmware upgrade
 - **Language Select** - Select a OSD (monitor) language
 - **Reset** - Reset all setting except limit time and plans. Default password is '**cjfw**'
 - **Upgrade** - Upgrade firmware button. When user need to upgrade firmware, user need to put USB (which include firmware binary files) into the selected monitor. In this case, user just need to click this '**Upgrade**' button after USB connection.



Administrator Tool Bar / System Configuration tool bar



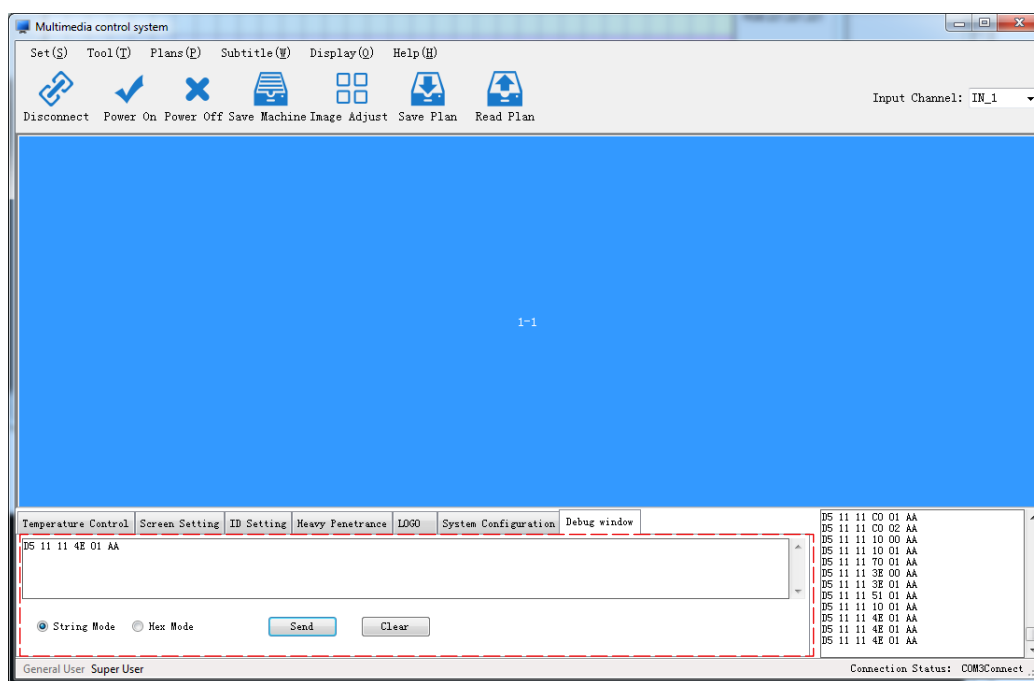
RESET button

CONTROL AND FUNCTION

Administrator Tool Bar / Debug Window

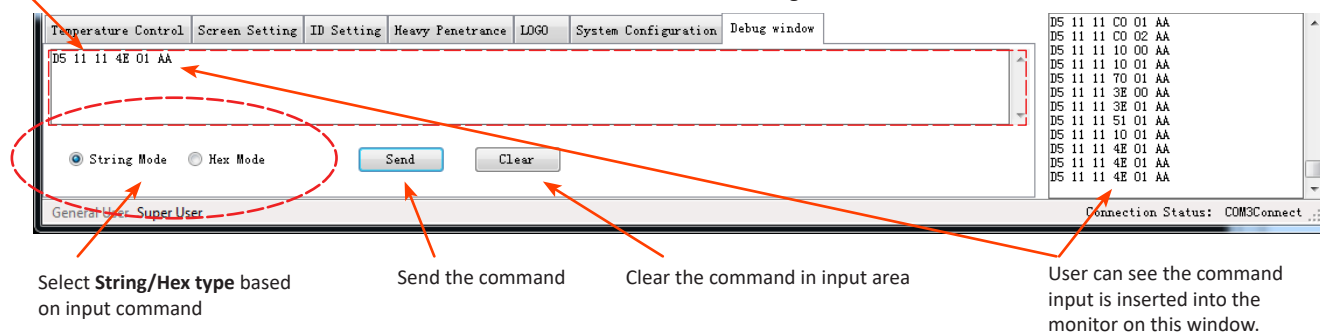
- Administrator Tool Bar/Debug Window**

- This section let user manually put the command to the monitor sent by String or Hex mode
- **Command Input Area** - Type the command based on String or Hex type
- Select **String/HEX** mode - User can select command type
 - Hex command** - It is a positional numeral system with a radix, or base, of 16. It uses sixteen distinct symbols, most often the symbols 0–9 to represent values zero to nine, and A–F (or alternatively a–f) to represent values ten to fifteen. (i.e., D5 11 11 4E 01 AA)
 - String command** - The strings command returns each string of printable characters in files. Its main uses are to determine the contents of and to extract text from binary files. (i.e., grep -iR Intel *)
- **Send** - Send the command to the selected monitor
- **Clear** - Clear the written command from command input area



Command input area

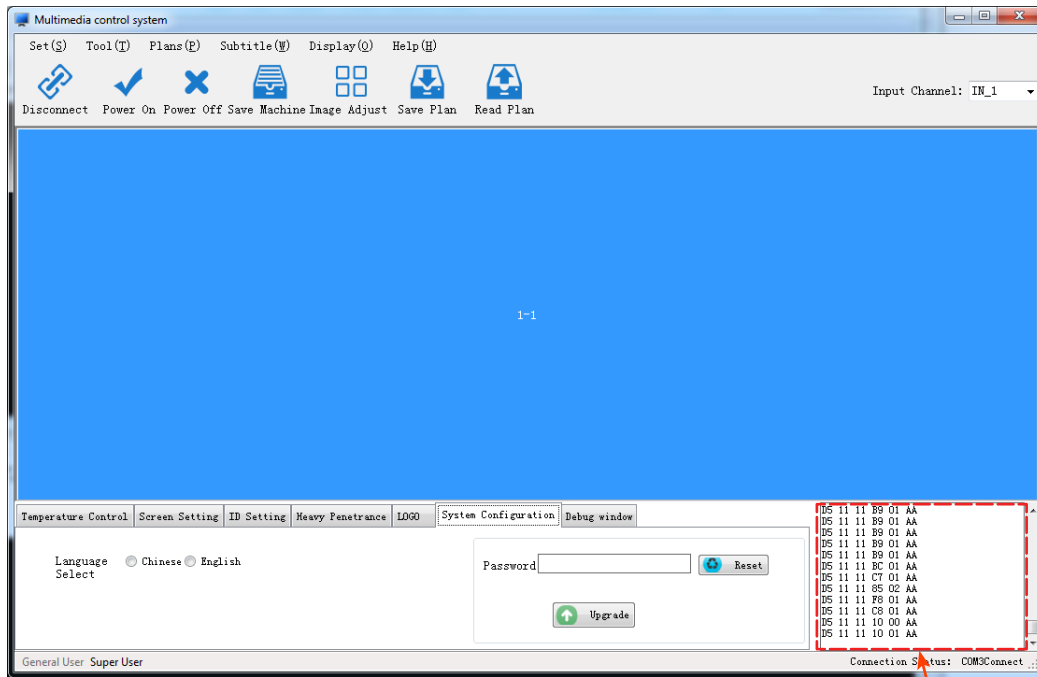
Administrator Tool Bar / ID Setting tool bar



CONTROL AND FUNCTION

Administrator Tool Bar / Command Display Window

- **Administrator Tool Bar/Command Display Window**
 - This section let user see the command line (which sent to the selected monitor) as HEX mode.



Administrator Tool Bar / Command Display Window tool bar

