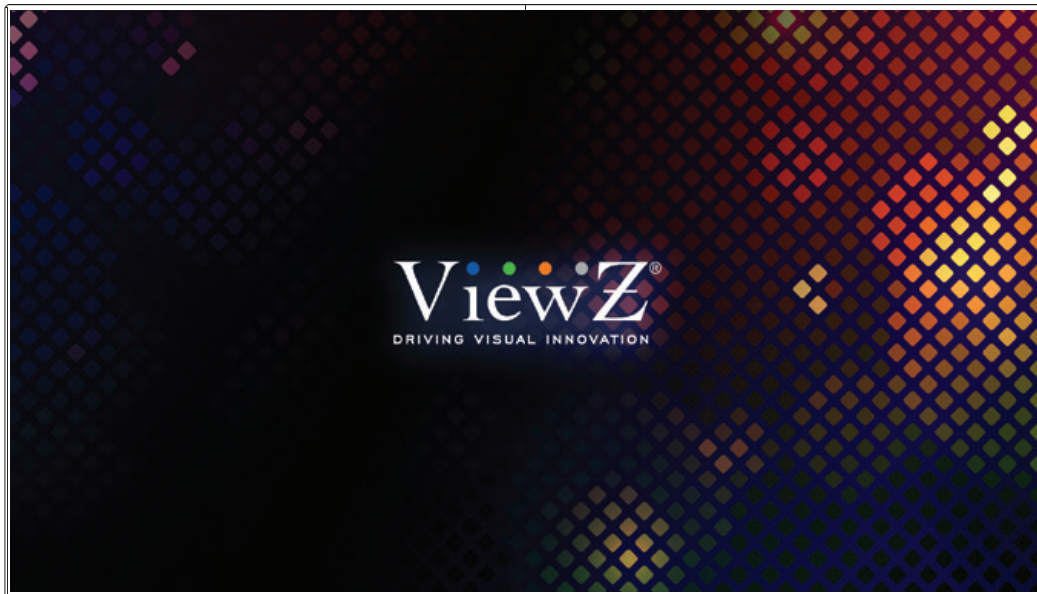


# VZ-UNBS SERIES

## Video Wall **M-Mix Control** Software

---

### USER MANUAL



**ViewZ**<sup>®</sup>  
[www.viewzusa.com](http://www.viewzusa.com)

Please read this manual thoroughly before use, and keep it handy for future reference.

# CONTENTS

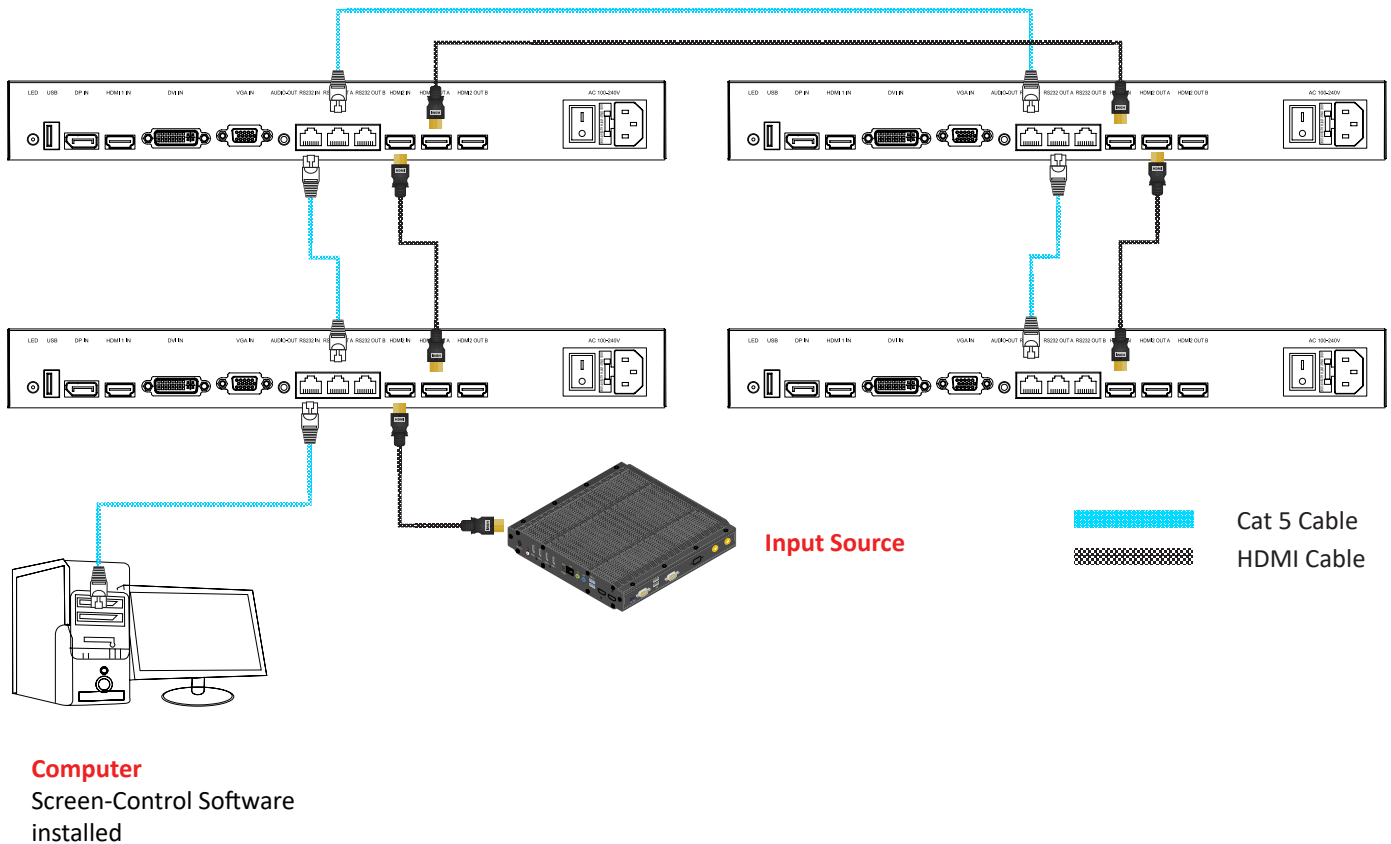
<b>Cable Configuration</b>	3
<b>Launch the Program</b>	4
1. Interface	5
2. Communication Setting	6
3. Video Wall Splicing Set up	8
4. Matrix Setting	9
<b>Menu Bar</b>	10
1. Turn On & Off Monitor	10
2. Advance Tool Bar	11
3. Timing Screen / Schedule Turn ON & OFF	12
4. ID Setting	13
5. Frame Effect	14
6. Image Adjust	15
7. Screen Advanced Control	16
8. Plan Control	17
9. Operation Area	18
10. Help	19

# SERIAL CABLE CONFIGURATION

## Video Wall Wiring Configurations - Screen Control SW

### ! Caution

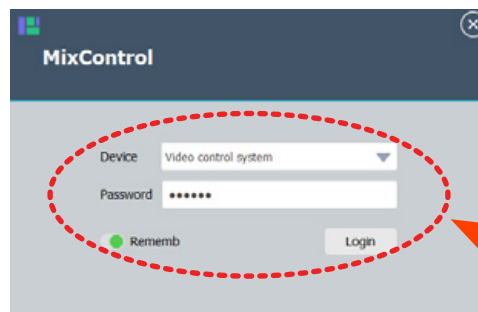
- Before the operation of this program, user need to confirm the connection between the computer (which has Screen-Control program) and monitors



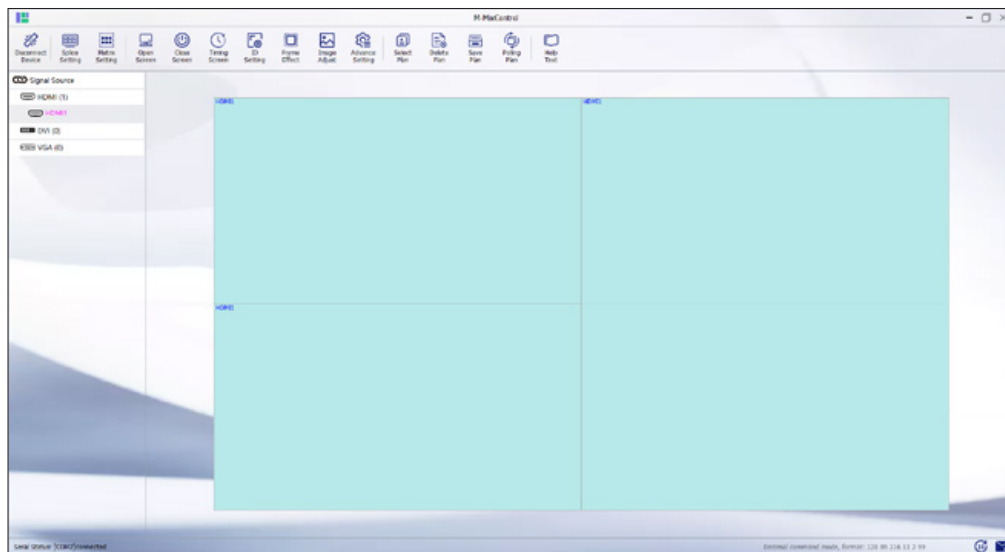
# CONTROL AND FUNCTION

## Launch the program

- Find the '**M-MixControl**' program and double click to launch it.
  - First of all, check the user account is the **video control system**. The other account (video processor terminal) is not working on this system.
- Default ID / Password: **Video control system** / **123321**



Set Device ID **Video control system**  
Set Password **123321**



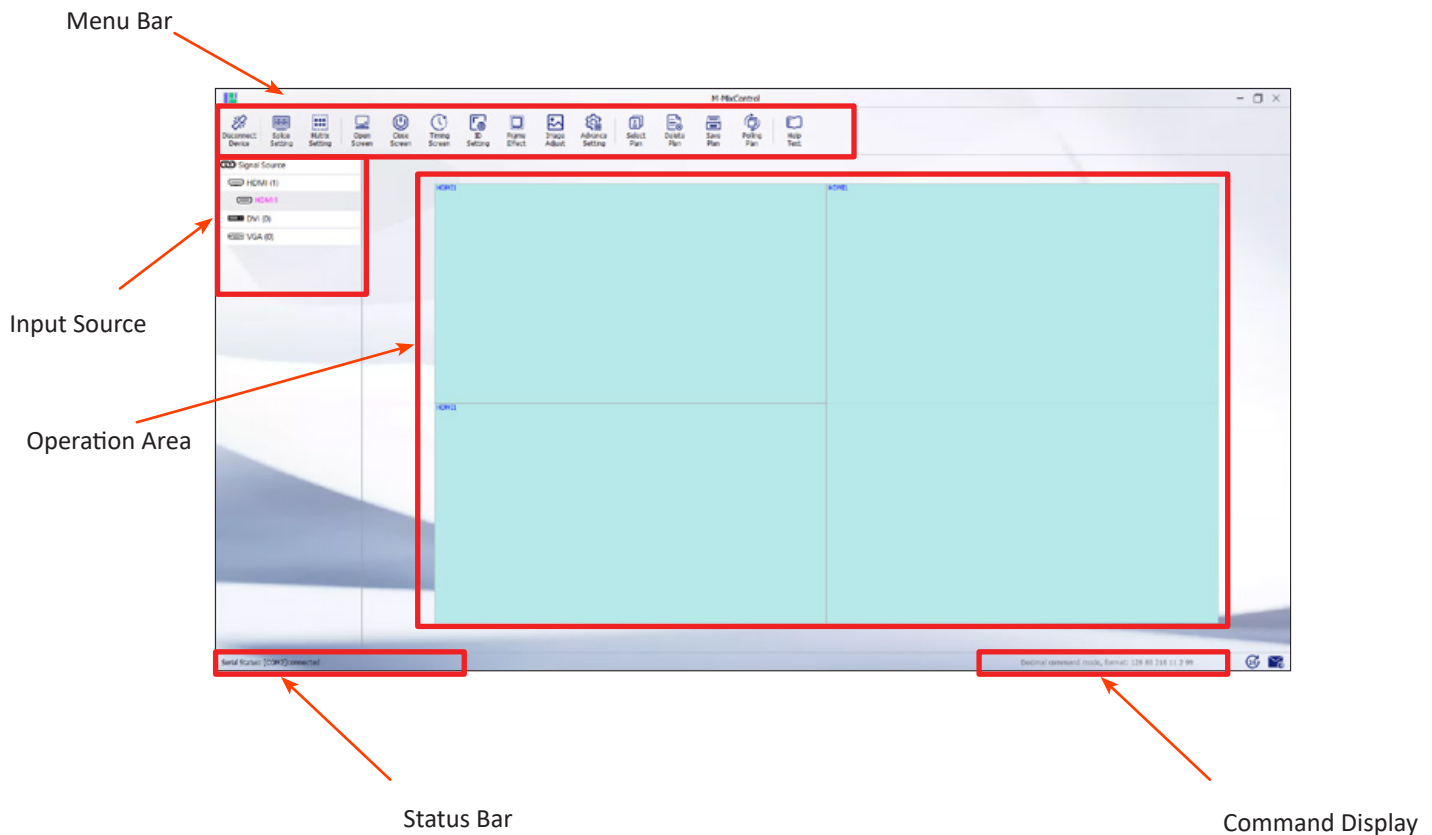
### Caution

- This program is portable and does not require to install onto PC.
- If you cannot run program, please check provided CD/USB to run '**M-MixControl**' program.
- If you can launch the program, first of all, you need to connect RS232 serial cable(RJ45) between monitor and computer (which run MixControl program).
- RJ-45 to DP9 converter & converter driver is included in CD/USB.

# CONTROL AND FUNCTION

## Launch the program - Interface

- General and Advance settings are different.
- Administrator interface consists of six parts: menu bar, input source, operation area, administrator tool bar (additional function bar), command display and status bar.
- General User can see 5 parts except administrator tool bar



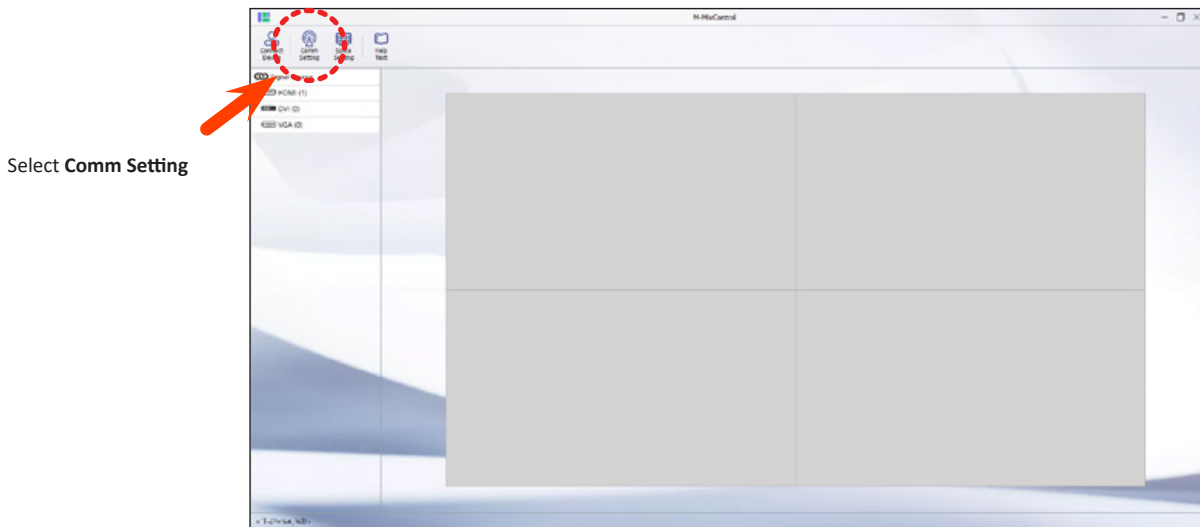
- Menu bar - Video wall system control
- Input Source - Display the current input source
- Operation area - Allow to control each monitor
- Status bar - Display the current status of program
- Command display - Display the ASCII code command for monitors

# CONTROL AND FUNCTION

## Menu Bar - Comm Setting

- Before starting program, user should check **Comm Setting (Communication Setting)**. Please check the connection between the computer and the monitor via RJ-45, RJ-45&RS-232 Converter and RS-232.

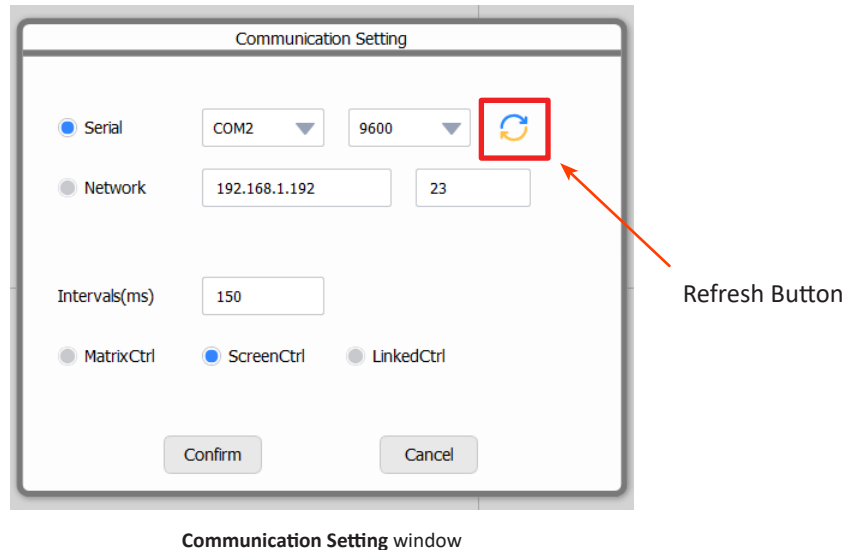
**⚠ Caution :** **Comm Setting** should be done before **Open Connect** (Tool bar) button click. The **Comm Setting** cannot be edited after **Open Connect - connected status**.



Main window

# CONTROL AND FUNCTION

## Menu Bar - Comm Setting



- **Serial port connection:** Select “**Serial (Serial port connection)**” to set the COM port and baud rate to be connected.
- **Network connection:** Select “**Net (Network Connection)**” and set the IP address and port number to be connected - Not support for VZ-UNBS
- **Intervals (ms):** Default number is '150ms' and this value is the waiting time after each command.
- **ScreenCtrl:** Control 'Splicing Screen System' for video wall monitors
- **MatrixCtrl:** Control 'Matrix' for video wall monitors - Not support for VZ-UNBS
- **LinkedCtrl:** Control both 'Matrix and Splicing Screen System' for video wall monitors - Not support for VZ-UNBS
- Click the **Refresh** button before set it up, and then input proper info or select it.
  - ▶ **The provided cable (RJ45 connector type) can use the serial communication. We recommend to use this cable for communication between computer and UNBS monitors.**
  - ▶ **How do I know which COM number to choose?**  
 Computer serial port info : you can check this at Computer Window (which run this program) and then Right-click "My Computer" → "Management" → "Device Manager" → "Port (COM and LPT)" → USB Serial Port (COM)  
 Check the relevant serial port number of the computer and compare it with **Communication setting** window.
  - ▶ **If you have a correct connection via serial cable, Serial port connection info will show COM info automatically.**

**⚠ Caution :** The (Communication) Connection should be connected by provided tools (RJ-45 & RJ-45 to RS232 converter). Or user can make own serial cable based on given info (please refer to **ViewZ UNBS User Manual**.)

To use converter, user need to install the converter driver on the computer (which Video wall program installed). The converter driver (Prolific USB-to-Serial) is included in the CD/USB.

# CONTROL AND FUNCTION

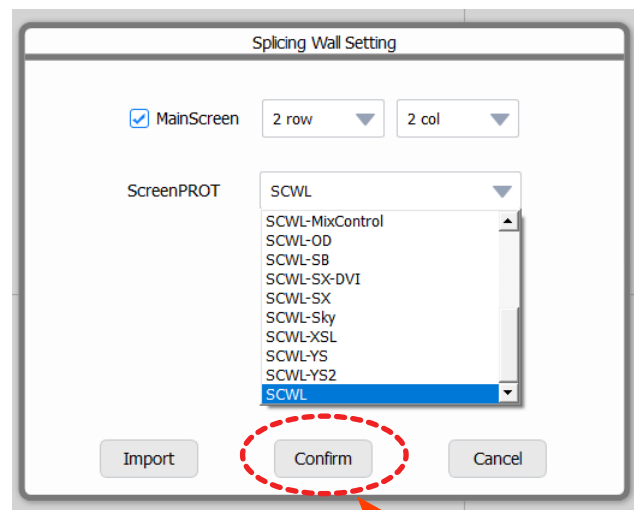
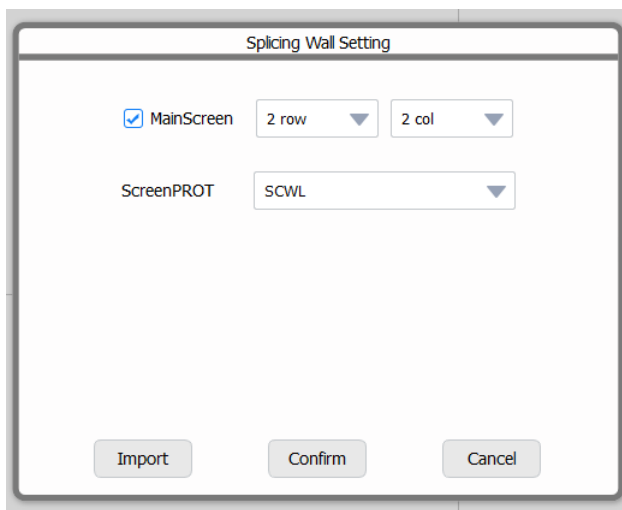
## Menu Bar - Splice Setting

- If you correctly setup on **Com Setting**, you should type the correct monitor number to '**Splice Setting**.'
- Click **Splice Setting** on menu bar
  - **Row** (Vertical number of monitors) - manually select the number ( Max 15 )
  - **Column** (Horizontal number of monitors) - manually select the number ( Max 15 )
  - **MainScreen** - Set the main splicing screen
  - **ScreenPROT** - Select screen protocol and the default is '**SCWL**'
  - **Import** - Import the new protocol into the program
  - **Confrim / Cancel** - Save or cancel the updated setup



**Note :** After selecting mode & updating row/column numbers, user need to click '**Confirm**' button to save current update. If not click, the u pdated value will not be applied.

**Note :** ScreenPROT only support '**SCWL**'.



Splicing Screen Setting window

To save the updating values,  
please click this button



# CONTROL AND FUNCTION

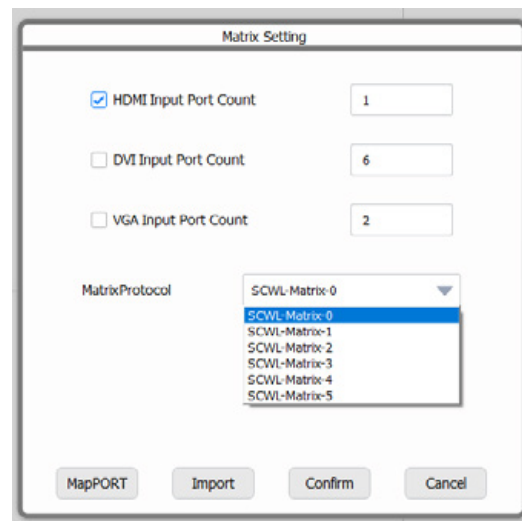
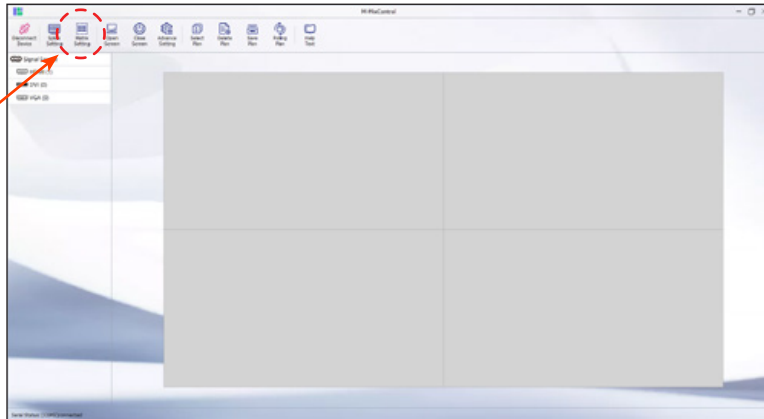
## Menu Bar - Matrix Setting

- Matrix Setting**

This setting is applied when the external matrix switcher is used

- Check the input source & type the input source number. The default of Matrix Protocol is '**SCWL-Matrix-0**'.
- HDMI, VGA & DVI input sources should be checked based on the input connection.
- MapPORT & Import - this button will import matrix data.

Click this text ('Matrix Setting') to launch the Matrix Setting window



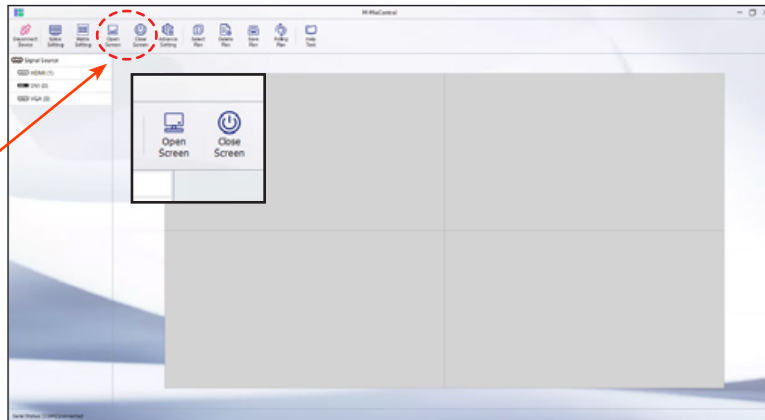
After click on Matrix Setting, the above window will popup.

# CONTROL AND FUNCTION

## Menu Bar - Open / Close Screen

- **Open / Close Screen**
  - You can turn on / off all video wall monitors

Click this text ('Open /  
Close Screen') to turn on /  
off all monitors

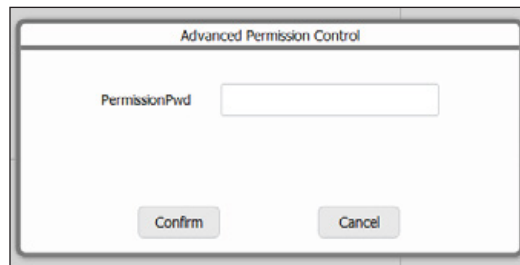
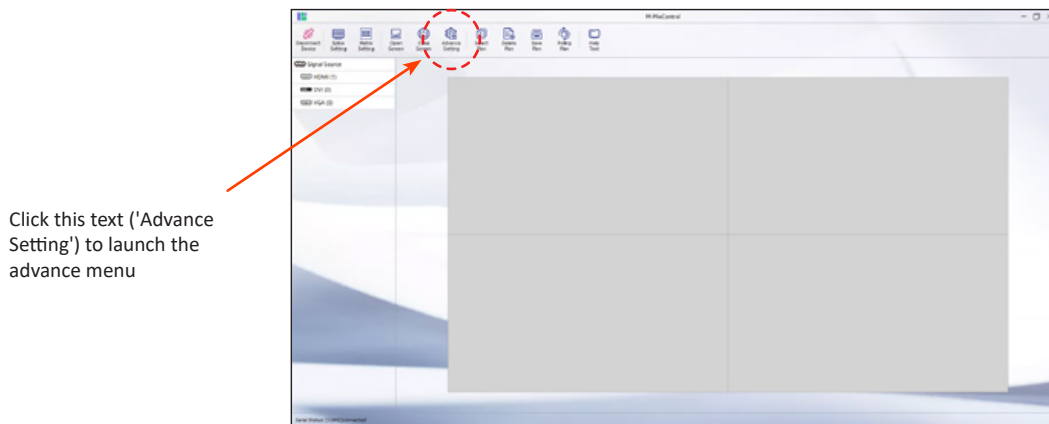


# CONTROL AND FUNCTION

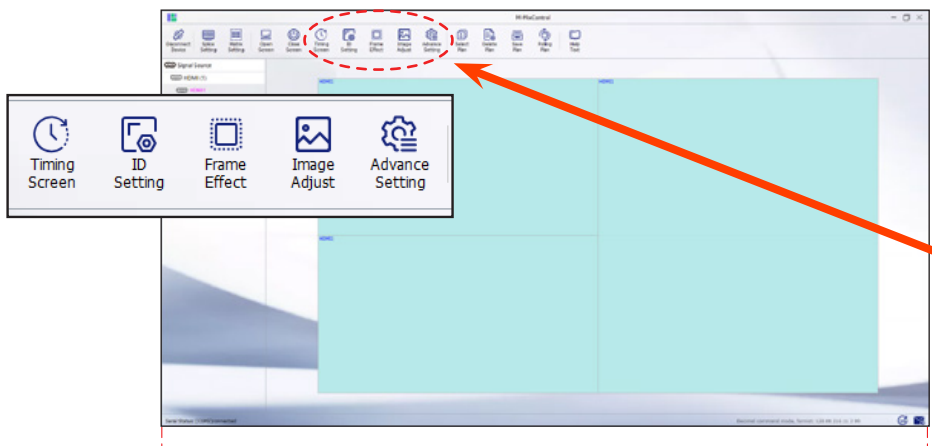
## Menu Bar - Advance Tool Bar

- Advance Tool Bar**

- The Advance Tool Bar is to manage more professional status of monitors. This advance tool bar let user manage monitor temperature, monitor display, video wall system configuration, timing screen, ID setting, frame effect, image adjust and advance setting.



After click on advance menu, the above window will popup. The default password is '**123321**'.



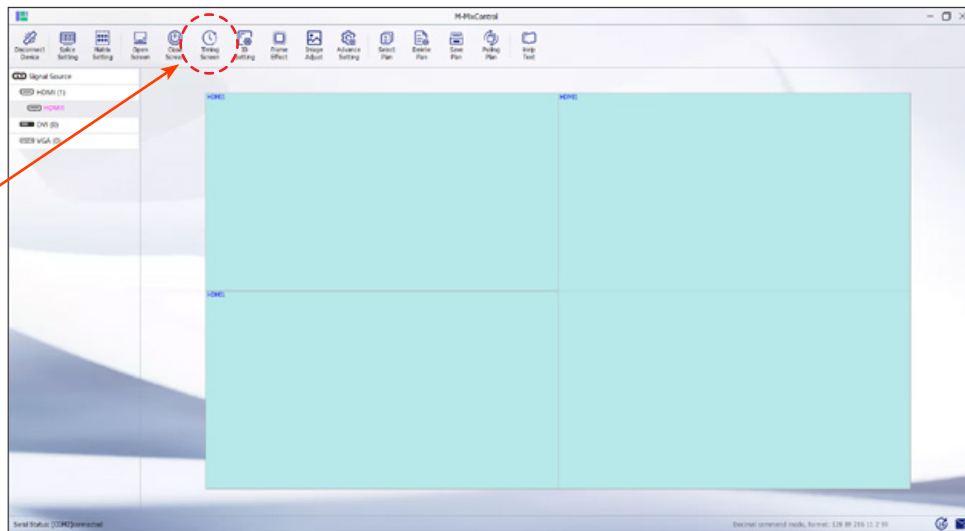
Advance tool bar

# CONTROL AND FUNCTION

## Menu Bar - Timing Screen

- **Timing Screen**
  - Set the automatic turn on/off time based on day & time.

Click this text ('Timing Screen') to set the screen on / off time



Timing screen (at least 1 minute interval)

	<input type="checkbox"/> Monday	<input type="checkbox"/> Tuesday	<input type="checkbox"/> Wednesday	<input type="checkbox"/> Thursday	<input type="checkbox"/> Friday	<input type="checkbox"/> Saturday	<input type="checkbox"/> Sunday
Screen on	8:00:00 AM	8:00:00 AM	8:00:00 AM	8:00:00 AM	8:00:00 AM	8:00:00 AM	8:00:00 AM
Screen off	6:00:00 PM	6:00:00 PM	6:00:00 PM	6:00:00 PM	6:00:00 PM	6:00:00 PM	6:00:00 PM

Confirm Cancel

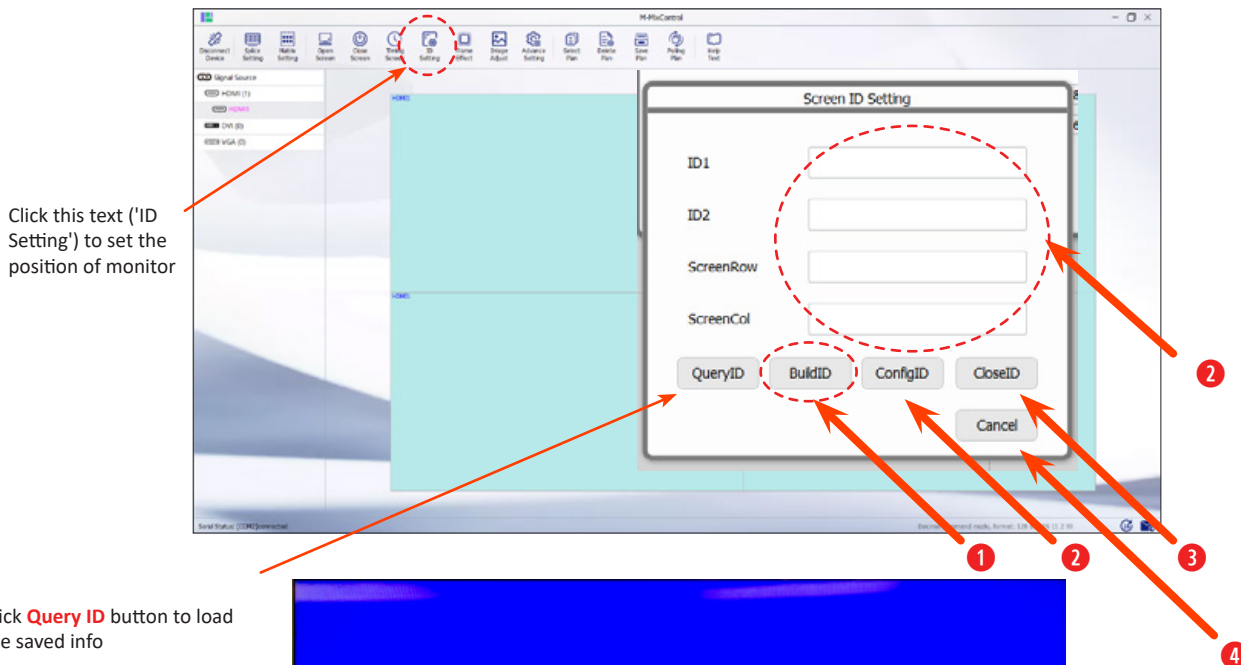
# CONTROL AND FUNCTION

## Menu Bar - ID Setting

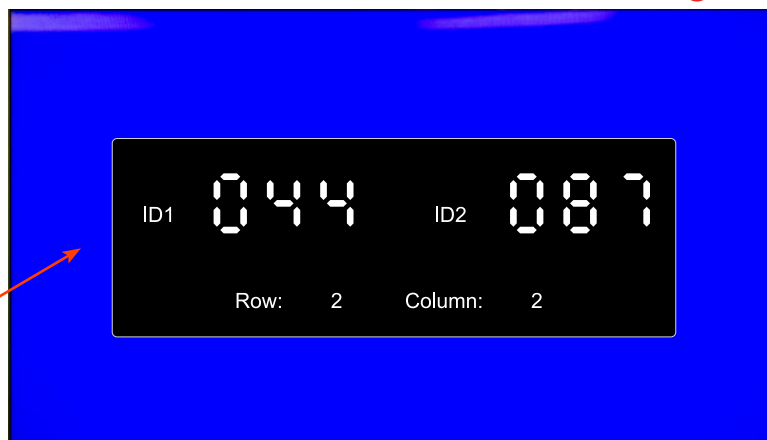
- ID Setting**

- To use all function of '**MixControl (Video Wall Program)**' and set the correct position of video wall monitor, user needs to configure the row & column number.

1. On the '**MixControl**', click **ID Setting** button. Then, user can see Screen ID Setting window. On the **Screen ID Setting** window, click **Build ID** to create ID numbers from each monitor - note !!  
When user click to **Build ID** button, each monitor will show the ID like below picture.
2. Type **ID 1** and **ID 2**. And type the desired **Screen Row** number and **Screen Col** number based on the monitor location. to set the position. Click '**Config ID**' button to apply the typed info
3. Click '**Close ID**' button to confirm and the pop-up screen of monitor will be disappeared
4. Click '**Cancel**' to close the **Screen ID Setting** window.



- 1 '044 & 087' is the ID of selected monitor

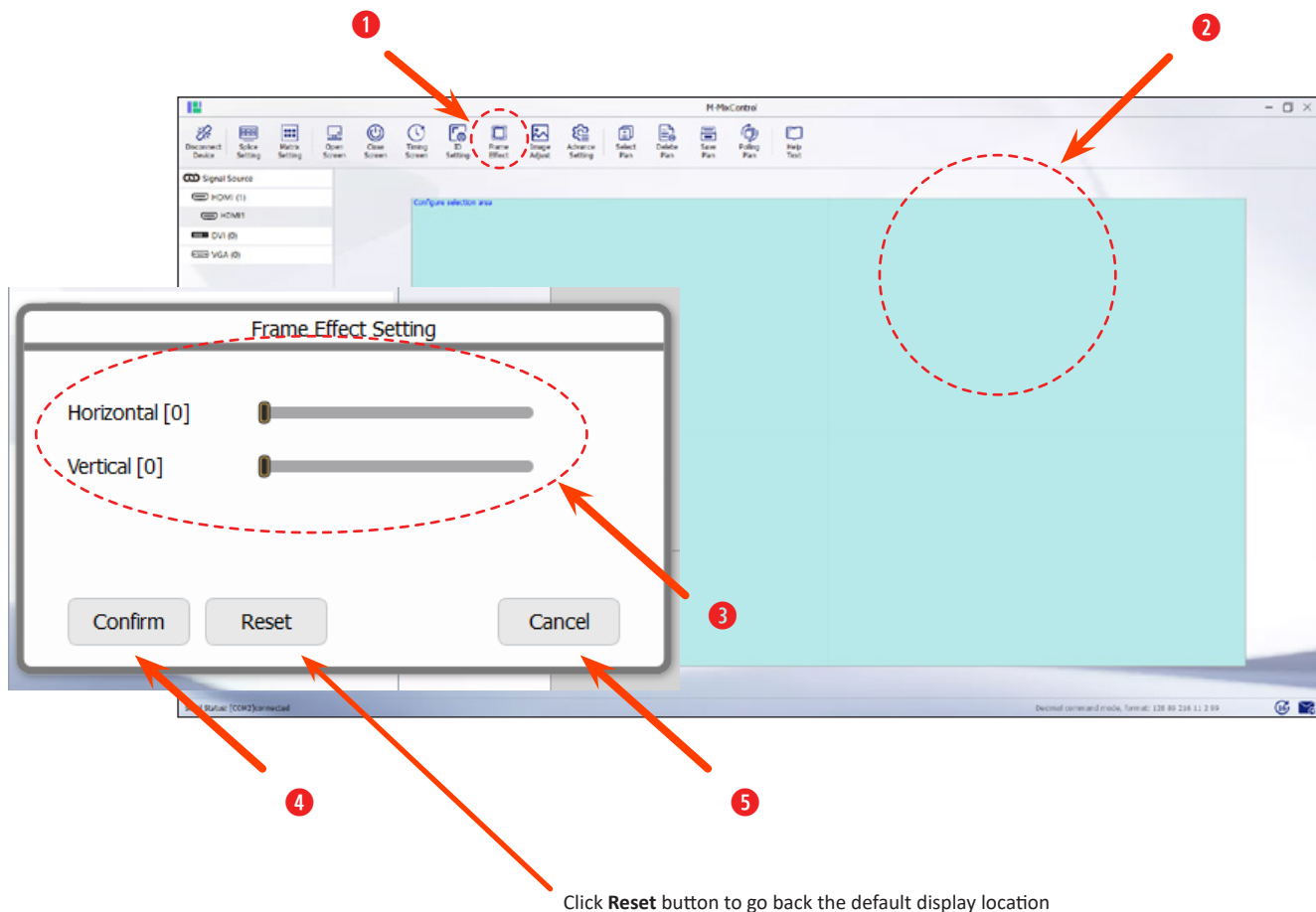


Sample Monitor ID information - you can see this, when click the 'Query ID' button

# CONTROL AND FUNCTION

## Menu Bar - Frame Effect

- Videowall display may need to adjust the image position. In this case, **Frame Effect Setting** can horizontally & vertically moves the image position on each monitor or entire monitor.
- Click '**Frame Effect**' button to launch '**Frame Effect Setting**' window.
  - Select one of the monitor area or entire area on the **Operating area**.
  - Move the cursor on Horizontal or Vertical bar - 0 to 100 value.
  - Click '**Confirm**' button to apply the value to the monitor.
  - Click '**Cancel**' button to close '**Frame Effect Setting**' window.

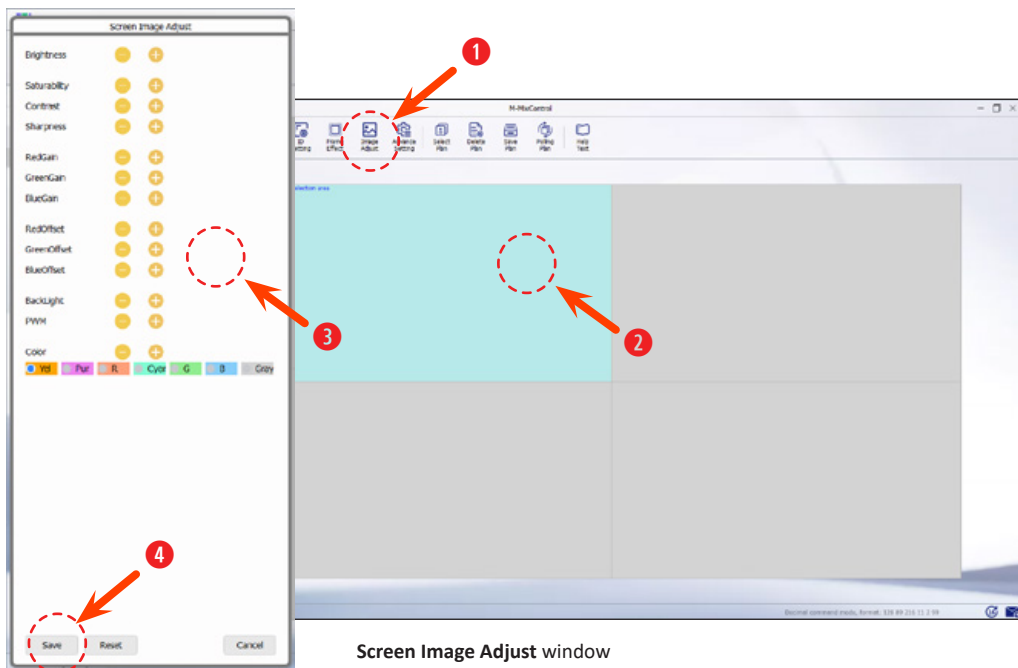


**⚠ Caution :** **Frame Effect Setting** can show the black/blank area on the screen. Ex. if you set 'Horizontal' bar as value 5, the display of selected monitor will move to the left or right and then the other side will show black/blank area.

# CONTROL AND FUNCTION

## Menu Bar - Image Adjust

- User can adjust image setting via **Image Adjust**.
- Click '**Image Adjust**' button to launch '**Screen Image Adjust**' window.
  - Select one of the monitor area or entire area on the **Operating area**.
  - Click '**+ or -**' button to adjust each feature's value to the monitor.
  - Click '**Save**' button to confirm the setup and click '**Cancel**' button to close window.



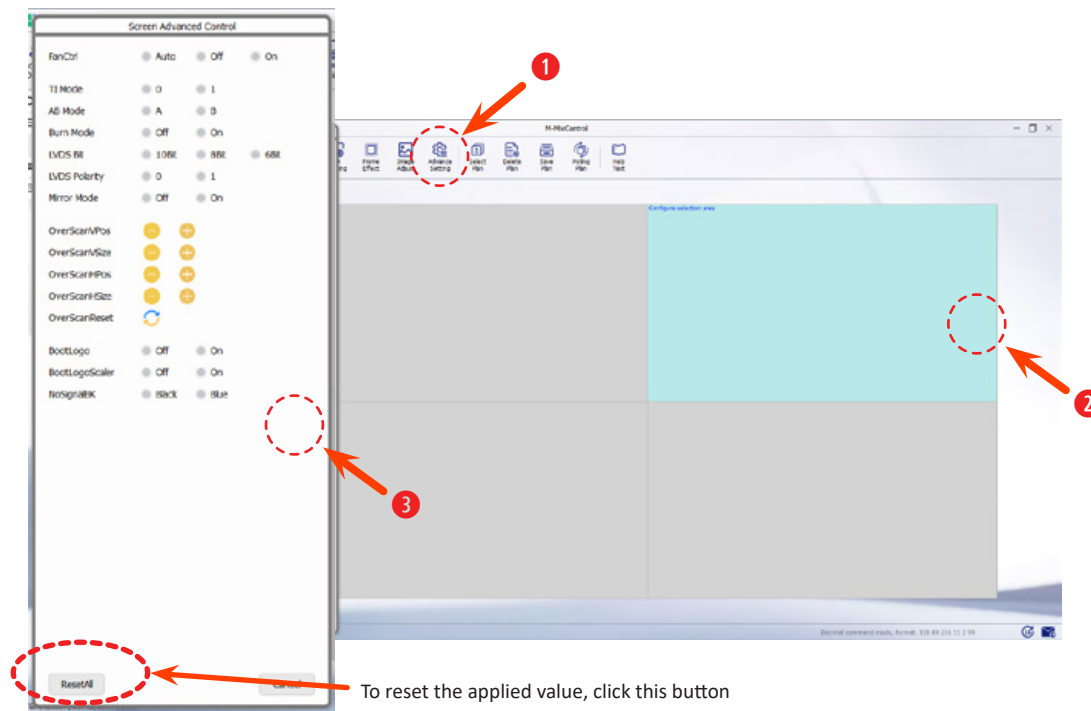
- **Brightness** - Adjust the brightness of the screen image
- **Saturability** - Adjust the depth of the image color
- **Contrast** - Adjust the brightness of the screen image
- **Sharpness** - Adjust the clarity and focus of the screen image
- **RedGain** - Adjust the color temp. to brighten the red component, mainly affecting the white field & bright field
- **GreenGain** - Adjust the color temp. to brighten and balance the green component, mainly affecting the white field & bright field
- **Blue Gain** - Adjust the color temp. to brighten the blue component, mainly affecting the white field & bright field
- **RedOffset** - Adjust the color temp. and dark balance red component, mainly affecting dark & dark fields
- **GreenOffset** - Adjust the color temp. and dark balance green component, mainly affecting dark & dark fields
- **BlueOffset** - Adjust the color balance dark balance blue component, mainly affecting dark & dark field
- **BackLight** - Adjust the backlight of selected monitor
- **PWM** (Pulse Width Modulation) - Adjust the light output of selected monitor
- **Color** - Select one of circles to adjust color automatically

To apply this setup, please click the '**Save**' button

# CONTROL AND FUNCTION

## Menu Bar - Screen Advanced Control

- User can adjust image setting via **Advance Setting**.
- Click '**Advance Setting**' button to launch '**Screen Advanced Control**' window.
  - Select one of the monitor area or entire area on the **Operating area**.
  - Click '**+ or -**' button or check the circle to adjust each feature's value to the monitor.
  - Click '**Cancel**' button to close window.



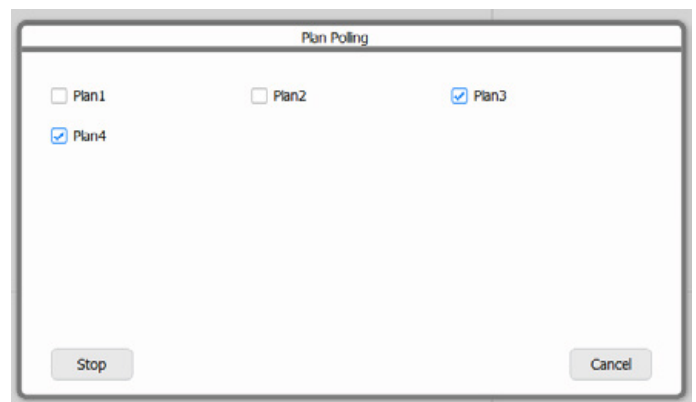
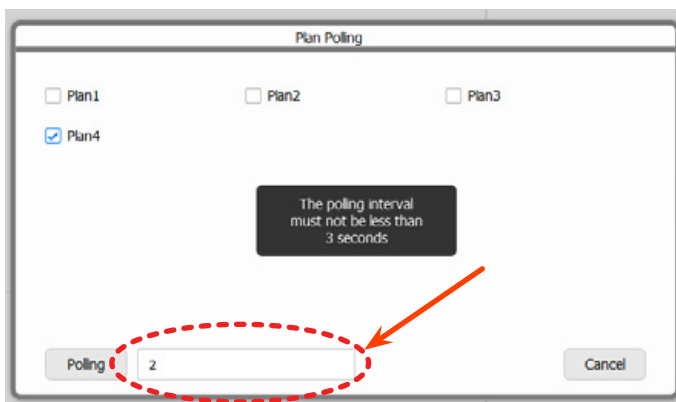
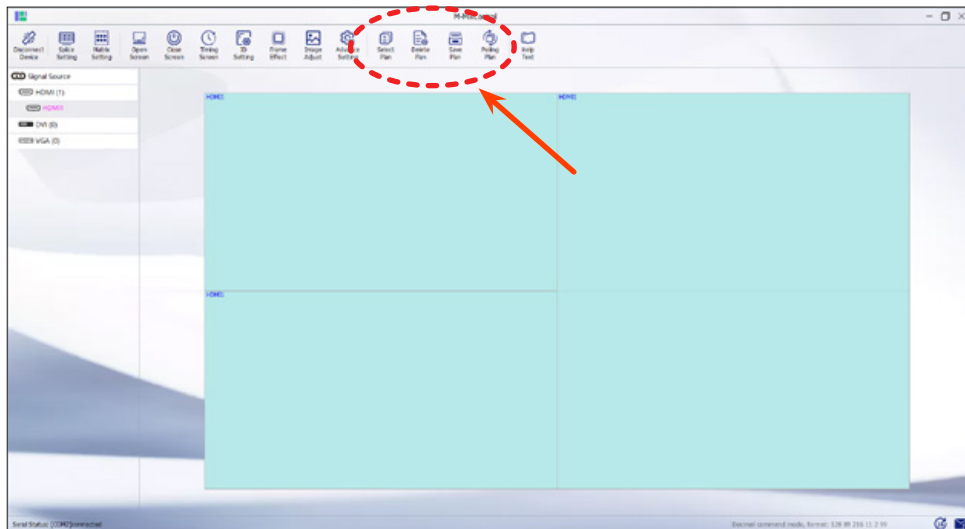
- **FanCtrl** - Control the cooling fan of selected monitor - Automatic/Off/On
- **T1 Mode** - Adjust the config of LVDS output which is divided into JIEDIA(0) and VESA(1)
- **AB Mode** - Adjust the dual LVDS output sequence
- **Burn Mode** - Set periodic image retention
- **LVDS Bit** - Adjust the value of LVDS output data
- **LVDS Polarity** - Adjust positive and negative order of LVDS
- **Mirror Mode** - Adjust the input source whether mirror or not
- **OverScanVPos** - Adjust the value of picture at the vertical start position
- **OverScanVSize** - Adjust the vertical size on the value of picture
- **OverScanHPos** - Adjust the value of picture at the horizontal start position
- **OverScanHSize** - Adjust the horizontal size on the value of picture
- **OverScanReset** - Reset the value of over scan
- **BootLogo / BootLogoScaler** - Not Support
- **NoSignBK** - Set the black screen when power is on



# CONTROL AND FUNCTION

## Menu Bar - Plan Control

- User can save all of settings in plans
  - Plan has 4 functions - save, delete, retrieve and rotate the plan
  - **Save Plan** - User can save the current display matrix.
  - **Delete Plan** - User can delete the saved plan.
  - **Select Plan** - User can retrieve/load saved plan.
  - **Polling Plan** - User can rotate plans on the videowall.



**⚠ Caution :** user should select more than 2 plans and polling(interval) should be set more than 3 seconds.

# CONTROL AND FUNCTION

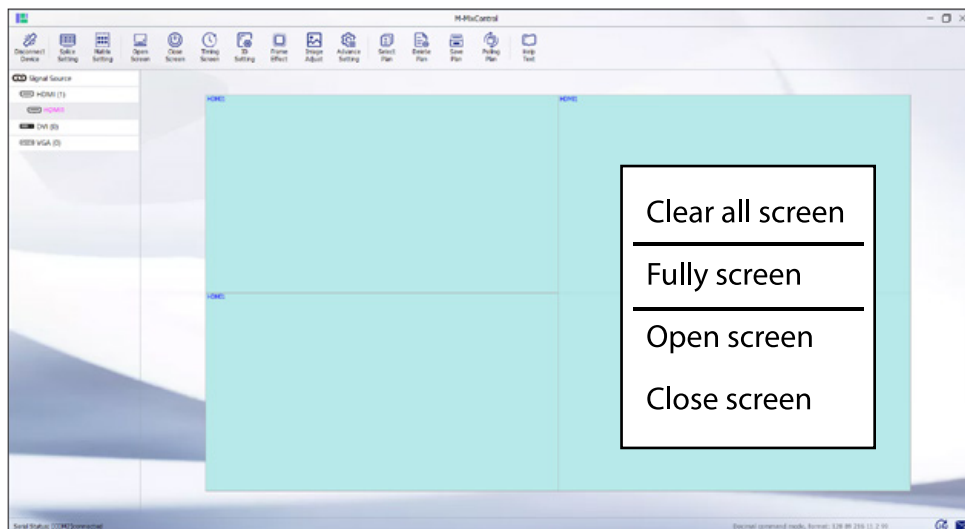
## Menu Bar - Operation Area

- **Setup**

Drag & drop the signal on the left (input source) to the Operation Area (on the right) to display on the video wall.

When right click on the Operation Area;

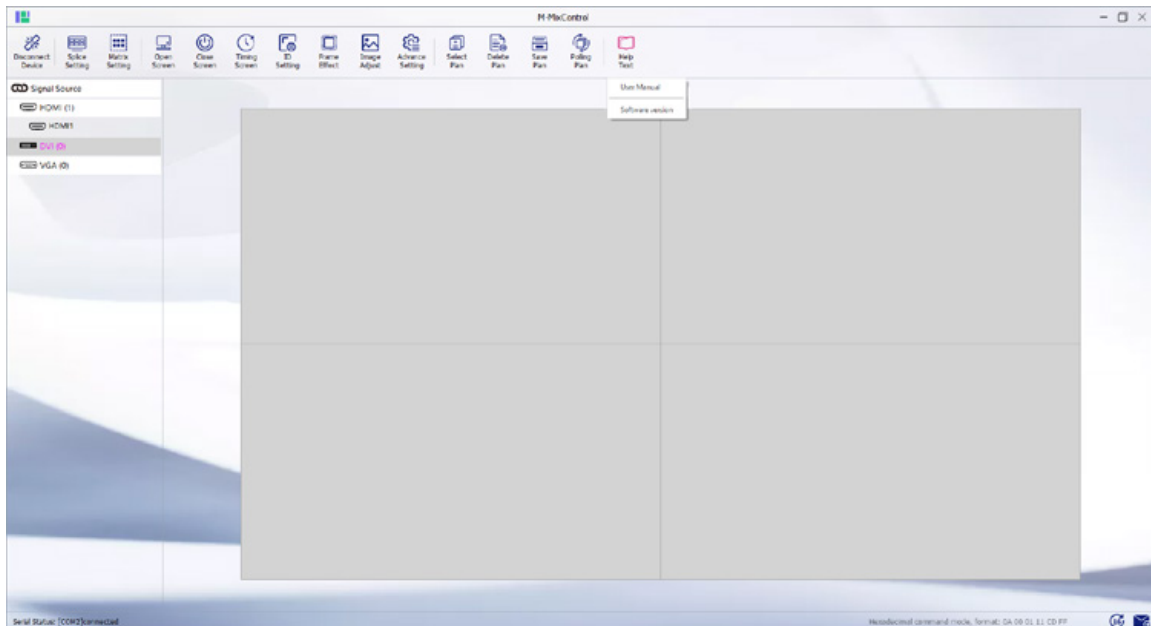
- **Clear all screen** - Clear the input source on every monitor
- **Fully screen** - Fill up the video wall by selected input source
- **Open screen** - Turn on the videowall
- **Close screen** - Turn off the videowall



# CONTROL AND FUNCTION

## Menu Bar - Help

- **Setup**
  - **User Manual** - Load the PDF software user manual
  - **Software Version** - Display the software version



## This image shows a single sheet of white paper with horizontal blue or grey ruling lines. The lines are evenly spaced and run across the width of the page. There are approximately 20 lines visible. The paper has a slight shadow on the right side, suggesting it's resting on a surface. There is no handwriting or other markings on the paper.