

VZ-IP-PVMN SERIES

23", 27" & 32" IP PUBLIC VIEW MONITOR

MEDIA CARD **INSTALLATION** USER MANUAL



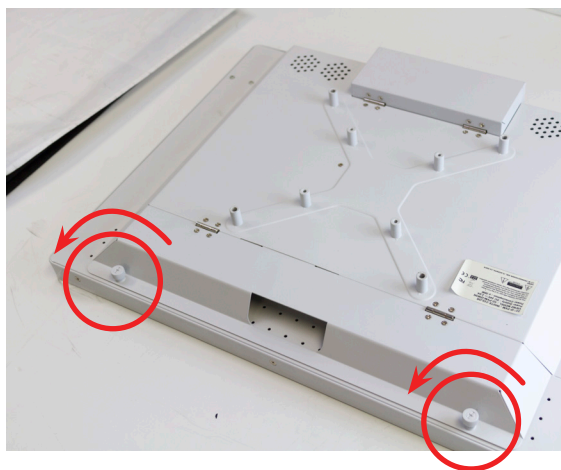
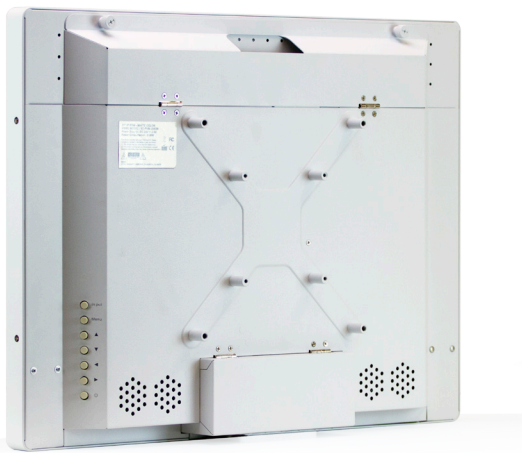
ViewZ[®]
www.viewzusa.com

Please read this manual thoroughly before use, and keep it handy for future reference.

MEDIA CARD INSTALLATION

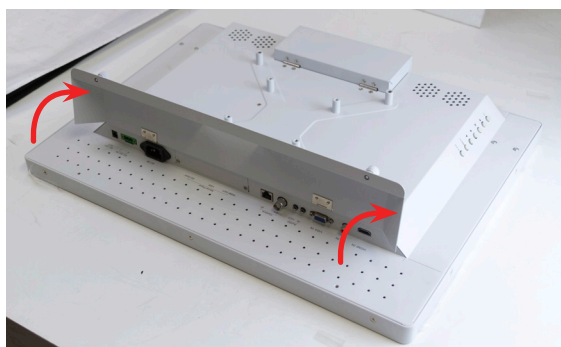
Installation 1

Prepare the IPPVM-N monitor and Media Card.



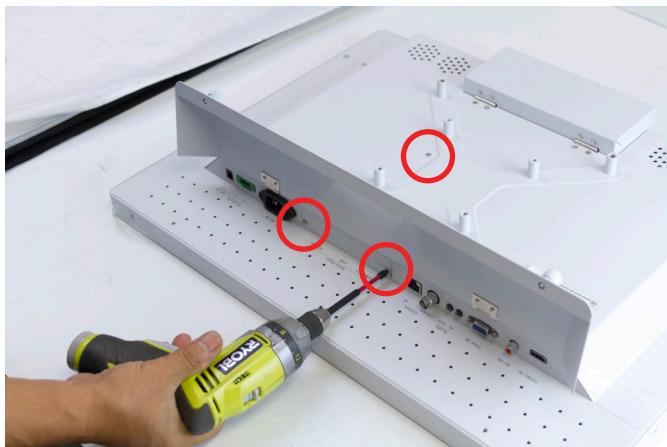
1

Open the back cover of IPPVM-N

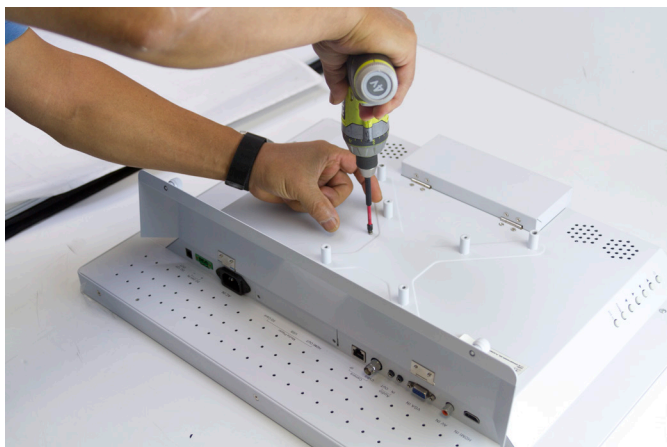


MEDIA CARD INSTALLATION

Installation 2

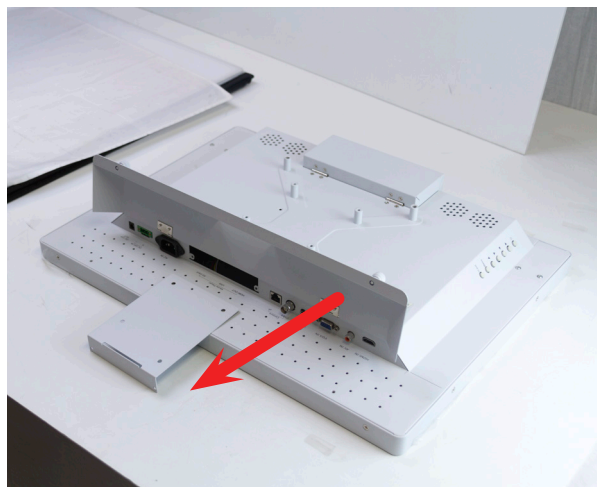
**2**

1. Unscrew **3 screws at 3 places**

**3****4**

MEDIA CARD INSTALLATION

File Manager

**5**

Take out the holder

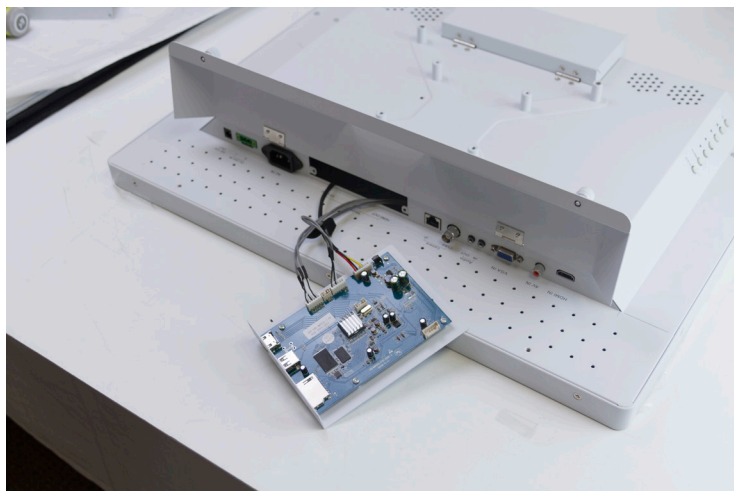
**6**

Take out 3 cables

**7**

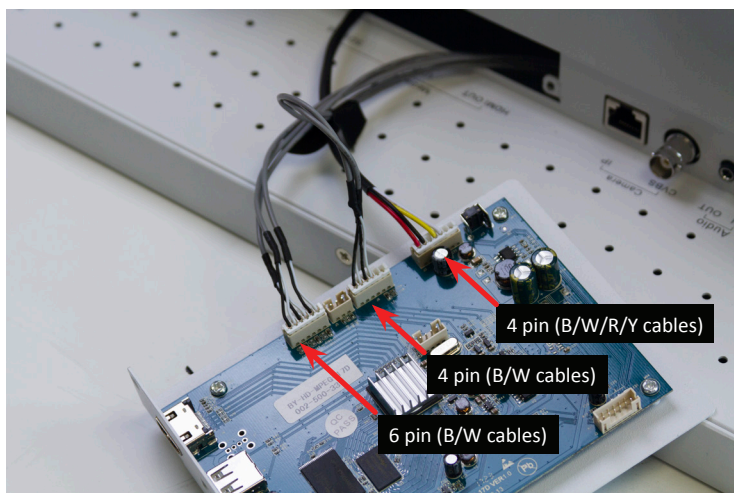
MEDIA CARD INSTALLATION

Setup - Audio



8

Connect the cable to Media Card



9

Please plug the cables like right picture.
If you do not follow right order, it cause the damage to the product.



10

Attach the media card to the IPPVM-N

SD Card



USB



HDMI

