

# VZ-IPPVM-N & VZ-IPPVM-P SERIES

## 10", 23", 27" & 32" IP PUBLIC VIEW MONITOR

---

### IP SEARCH & Firmware UPDATE **MANUAL**



**ViewZ**<sup>®</sup>  
[www.viewzusa.com](http://www.viewzusa.com)

Please read this manual thoroughly before use, and keep it handy for future reference.

# IP SEARCH

## Instructions



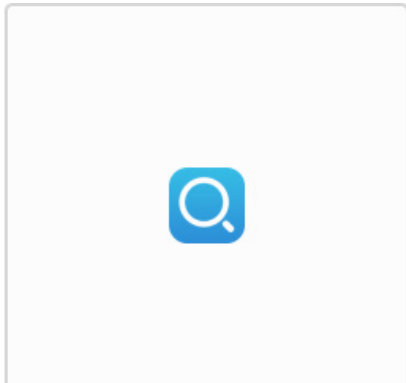
### Note

- IP Search tool finds IP devices on the network, change the IP address of devices and upgrade the firmware of devices. Here are the steps to use this program.

## 1. Connect



Connect the computer in LAN, and double click the icon (under "IPSearch Tools" folder) to execute the program.

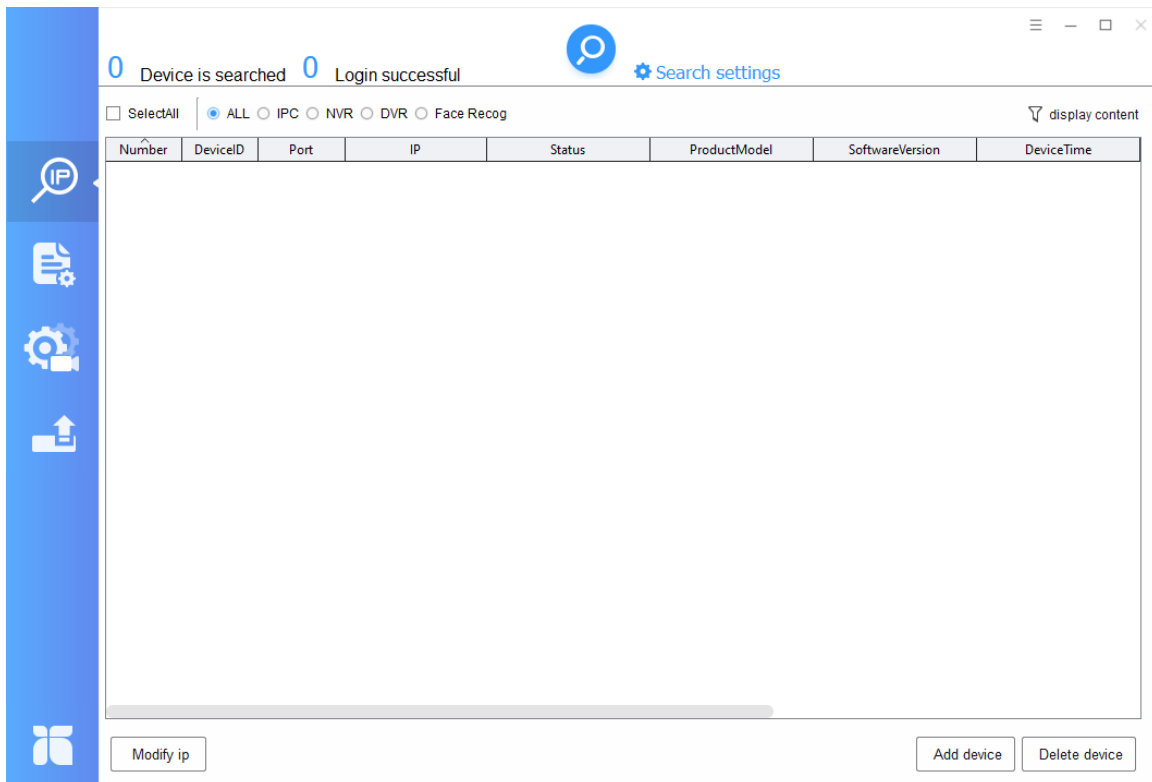


# IP SEARCH

## 2. Software Interface



Software interface shown below will appear.

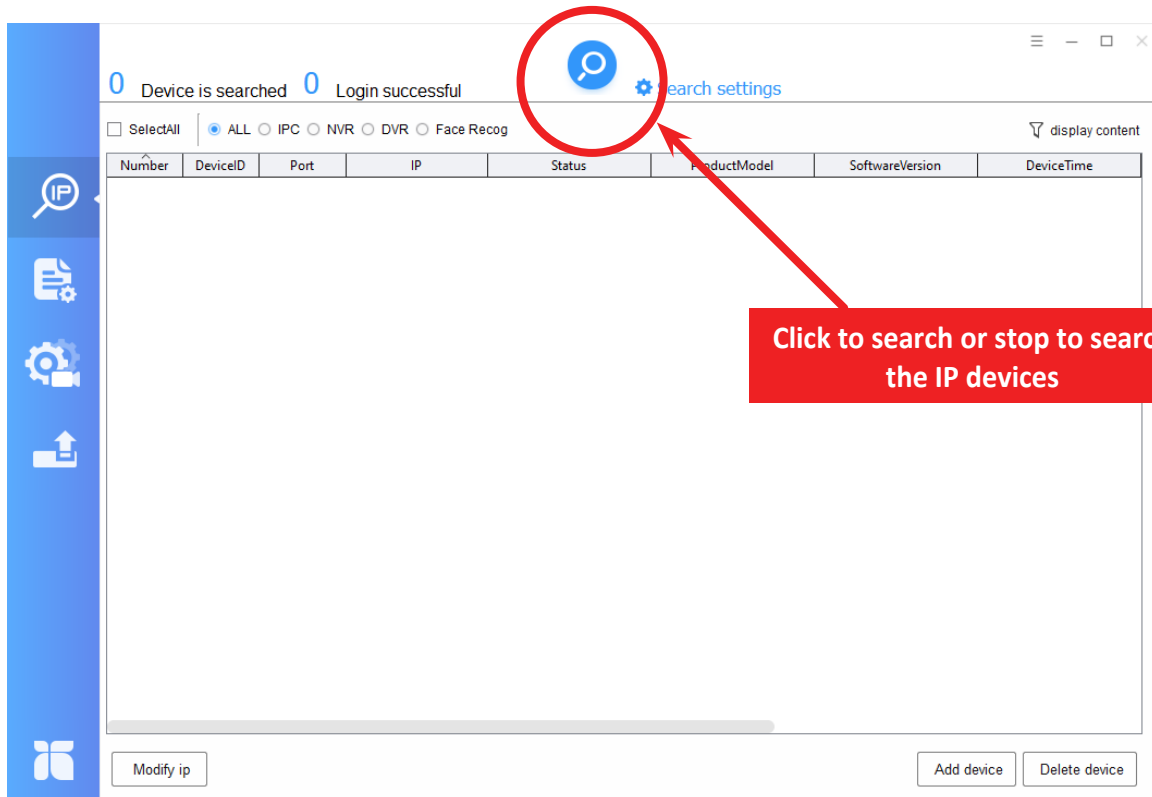


# IP SEARCH

## 3. Start



Click “Start” button to automatically search the IP devices on the network, as shown below.




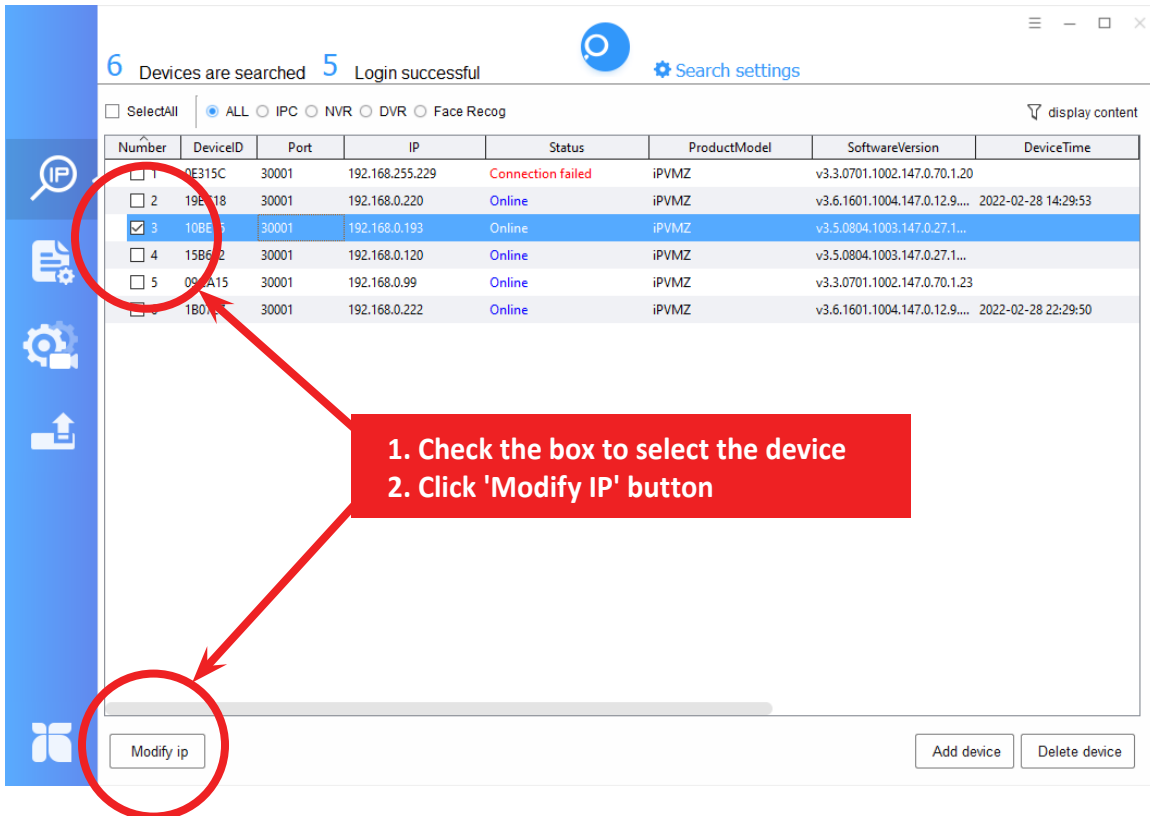
It will search for IP devices on the same network, and show the “Device ID”, “IP Address”, “Product Model” and “Software Version”

You can click “Search Icon” to stop the search when you find device/devices that you want.

# IP SEARCH

## 4. Change IP address of IP encoder

 To change the IP address of the desired IP device, select the device from the list and then click "Modify IP". You can also change the other network parameters by doing the same.



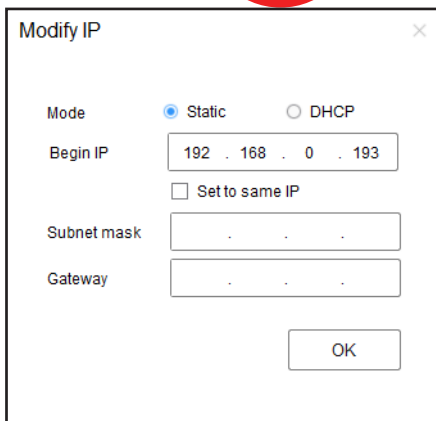
6 Devices are searched 5 Login successful

SelectAll ALL  IPC  NVR  DVR  Face Recog

Number	DeviceID	Port	IP	Status	ProductModel	SoftwareVersion	DeviceTime
<input type="checkbox"/>	0E315C	30001	192.168.255.229	Connection failed	iPVMZ	v3.3.0701.1002.147.0.70.1.20	
<input type="checkbox"/>	19E...18	30001	192.168.0.220	Online	iPVMZ	v3.6.1601.1004.147.0.12.9...	2022-02-28 14:29:53
<input checked="" type="checkbox"/>	10BE...	30001	192.168.0.193	Online	iPVMZ	v3.5.0804.1003.147.0.27.1...	
<input type="checkbox"/>	15B...	30001	192.168.0.120	Online	iPVMZ	v3.5.0804.1003.147.0.27.1...	
<input type="checkbox"/>	09...A15	30001	192.168.0.99	Online	iPVMZ	v3.3.0701.1002.147.0.70.1.23	
<input type="checkbox"/>	1B0...	30001	192.168.0.222	Online	iPVMZ	v3.6.1601.1004.147.0.12.9...	2022-02-28 22:29:50

1. Check the box to select the device  
2. Click 'Modify IP' button

Modify ip Add device Delete device



Modify IP

Mode  Static  DHCP

Begin IP

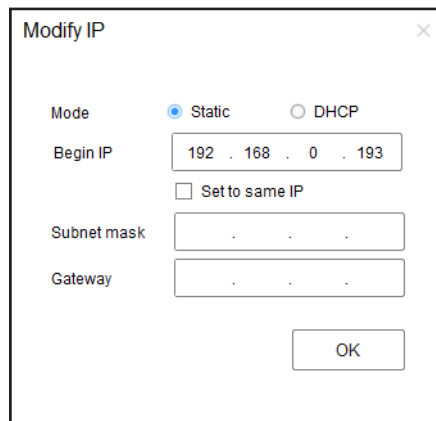
Set to same IP

Subnet mask

Gateway

OK

When click "Modify IP" button, this window will popup. You can choose 'Static' or 'DHCP' option.



Modify IP

Mode  Static  DHCP

Begin IP

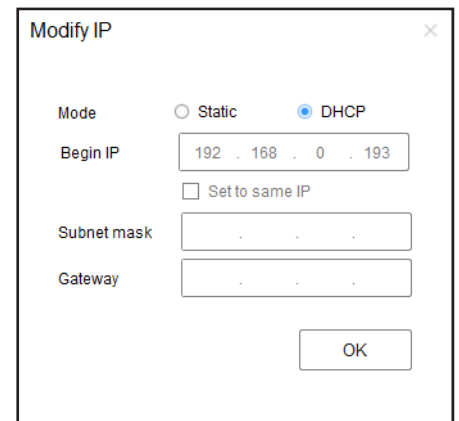
Set to same IP

Subnet mask

Gateway

OK

The 'Static' option let you type the IP address / subnet mask / gateway.



Modify IP

Mode  Static  DHCP

Begin IP

Set to same IP

Subnet mask

Gateway

OK

The 'DHCP' option will let you have a proper IP address automatically.

# IP SEARCH

## 5. Complete



Once the changes have take place, the message shown below will be prompted to confirm the change.

The screenshot displays the ViewZ IP Search interface. At the top, it shows the status "6 Devices are searched" and "5 Login successful". Below this, there are search filters: "ALL" (selected), "IPC", "NVR", "DVR", and "Face Recog". A "display content" button is visible on the right. The main area contains a table with the following data:

Number	DeviceID	Port	IP	Status	ProductModel	SoftwareVersion	DeviceTime
<input type="checkbox"/>	1	0E315C	30001	192.168.255.229	Connection failed	iPVMZ	v3.3.0701.1002.147.0.70.1.20
<input type="checkbox"/>	2	19EC18	30001	192.168.0.220			v3.6.1601.1004.147.0.12.9.... 2022-02-28 14:29:53
<input checked="" type="checkbox"/>	3	10BE15	30001	192.168.0.193			v3.5.0804.1003.147.0.27.1...
<input type="checkbox"/>	4	15B692	30001	192.168.0.120			v3.5.0804.1003.147.0.27.1...
<input type="checkbox"/>	5	09CA15	30001	192.168.0.99			v3.3.0701.1002.147.0.70.1.23
<input type="checkbox"/>	6	1B07E7	30001	192.168.0.222			v3.6.1601.1004.147.0.12.9.... 2022-02-28 22:29:50

A confirmation dialog box is overlaid on the table, titled "Tip", with a green checkmark icon and the text "set success!". An "OK" button is located at the bottom of the dialog.

# FIRMWARE UPGRADE

## 6. Firmware Upgrade

To update the firmware of the desired IP device, select the device from the list and then click "Upgrade".

The screenshot shows the IP Search Tool interface with the following elements:


- Header:** "6 Devices are searched 4 Login successful" and "Search settings" button.
- Filters:** SelectAll, ALL (selected), IPC, NVR, DVR, Face Recog.
- Table:**

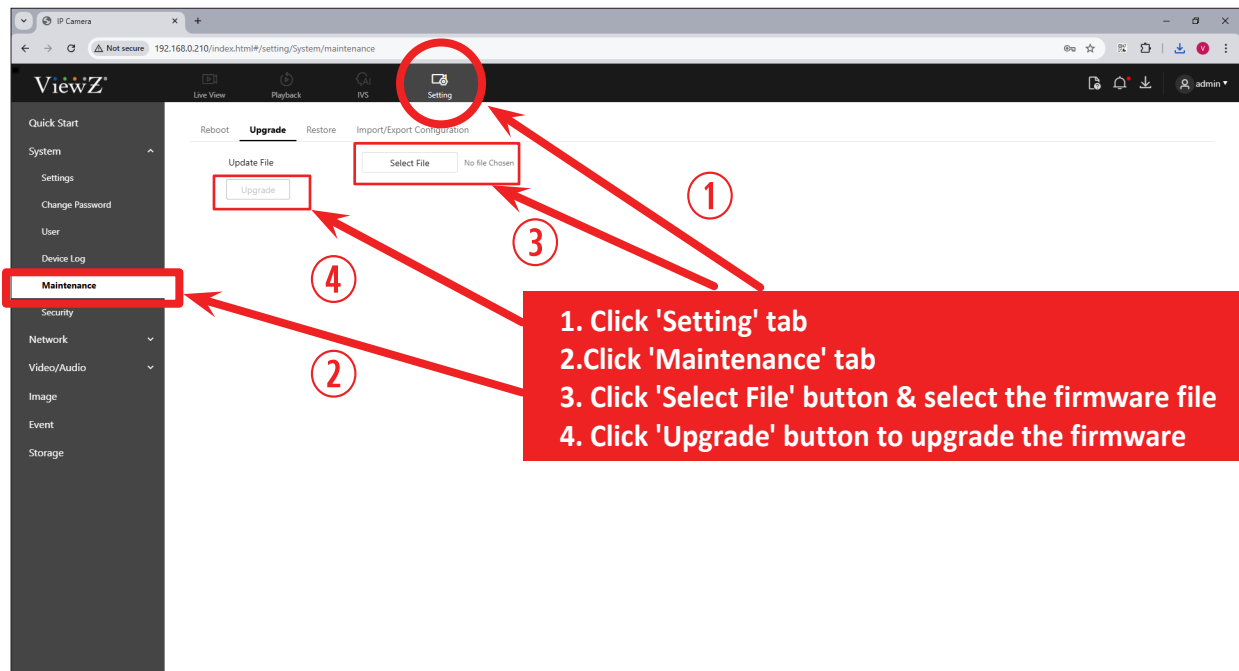
Number	DeviceID	IP	ProductModel	SoftwareVersion	UpgradePort	Upgrade status
<input type="checkbox"/>	1B07E7	192.168.0.222	iPVMZ	v3.6.1601.1004.147.0.12.9...	8083	
<input type="checkbox"/>	0E315C	192.168.255.229	iPVMZ	v3.3.0701.1002.147.0.70.1.20	8083	
<input type="checkbox"/>	19CA15	192.168.0.99	iPVMZ	v3.3.0701.1002.147.0.70.1.23	8083	
<input type="checkbox"/>	15B692	192.168.0.120	iPVMZ	v3.5.0804.1003.147.0.27.1...	8083	
<input checked="" type="checkbox"/>	19EC18	192.168.0.220	iPVMZ	v3.6.1601.1004.147.0.12.9...	8083	
<input type="checkbox"/>	10BE15	192.168.0.193	iPVMZ	v3.5.0804.1003.147.0.27.1...	8083	
- Annotations:**
  - ①: Points to the 'Firmware Update' button in the sidebar.
  - ②: Points to the checkbox for device 5.
  - ③: Points to the 'Choose File' button.
  - ④: Points to the 'Upgrade' button.
  - ⑤: Points to the 'Upgrade status' column header.
- Instructions:**
  1. Click 'Firmware Update' button
  2. Check the box to select the device
  3. Click 'Choose File' button & select the firmware file
  4. Click 'Upgrade' button to upgrade the firmware
- Bottom Section:**
  - File path: D:/ViewZ\_Brochure/Security/VZ-IPPVM-New/Softwa...
  - Buttons: Choose File, Reset, Forced to upgrade (checked), Upgrade.
  - Footnote: \* Do not power off during the upgrade process, the device will restart automatically after the upgrade is successful.


5. Do not turn off the 'IPSearchTool' program and selected device during the process of upgrade. When you click the 'Upgrade button', the message will be popup on the '⑤' area. The displaying message is 'uploading, upgrading and success'. When you see the 'success' message, the selected device will be automatically rebooting.

# FIRMWARE UPGRADE

## 6. Firmware Upgrade

-  To update the firmware of the desired IP device, login to the selected AI PVM's web management system via web browser (Chrome, Firefox or Edge).



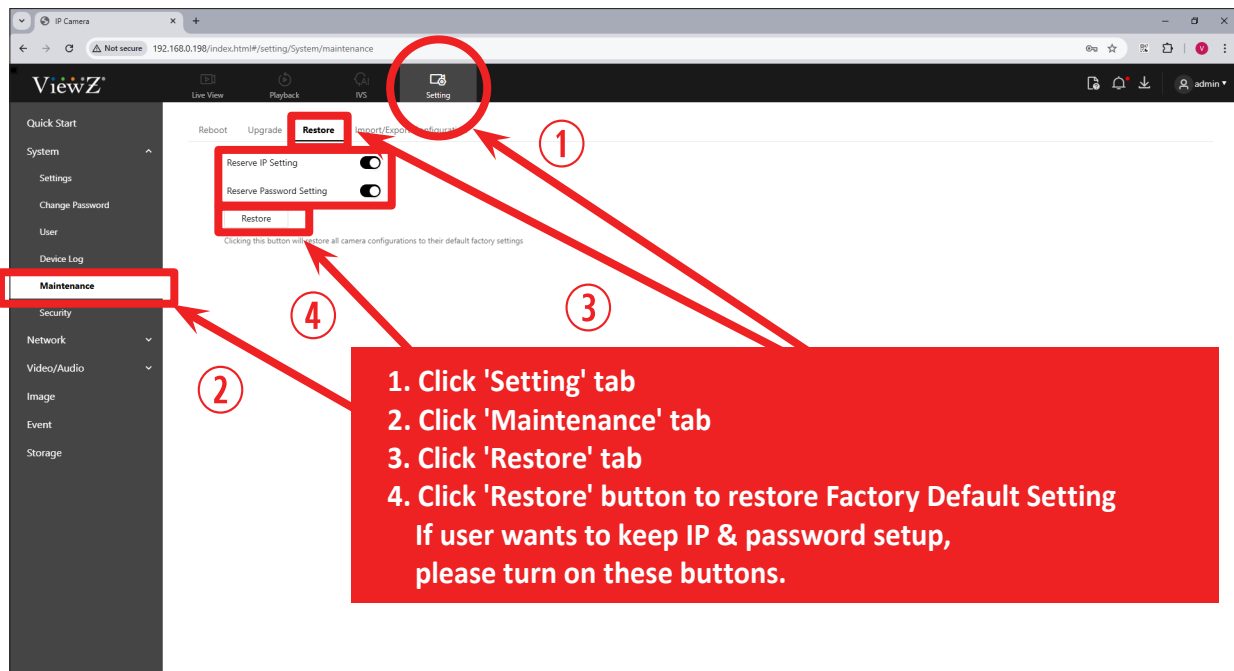
-  To upgrade firmware;
1. Access PVM's web management system via web browser (Chrome, Firefox or Edge).
  2. Go to **Setting > System > Maintenance > Upgrade**.
  3. Click **'Select File'** button to choose a firmware file from local computer.
  4. Click **'Upgrade'** button to upgrade the firmware.

To know about AI PVM's web management system, please refer **AIPVM's web user manual**.

# FIRMWARE UPGRADE

## 7. Reset the Sensor (IPC)

- After upgrading of firmware, you should reset the Image Setting (sensor(IPC)) and then restore to Factory Default to apply the upgrading.



- To reset the sensor;
1. Access PVM's web management system via web browser (Chrome, Firefox or Edge).
  2. Go to **'Setting > System > Maintenance > Restore'**.
  3. Click **'Restore'** button to reset the sensor (IPC).

To know about AI PVM's web management system, please refer **AIPVM's web user manual**.