

# VZ-D2IP-L SERIES

## 21.5" IP OUTPUT MONITOR

---

### IP SEARCH TOOL MANUAL



**ViewZ®**  
[www.viewzusa.com](http://www.viewzusa.com)

Please read this manual thoroughly before use, and keep it handy for future reference.

# IP SEARCH TOOL

## Instructions



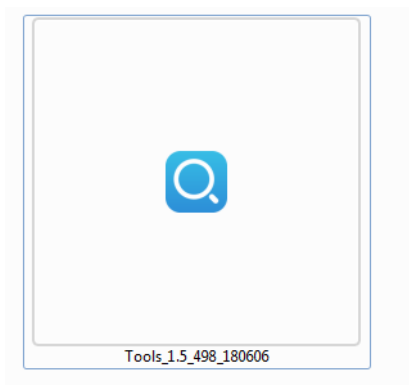
### Note

- IP Search tool finds IP devices on the network and change the IP address of devices. Here are the steps to use this program.

## 1. Connect



Connect the computer in LAN, and double click the icon (under "IPSearch Tools" folder) to execute the program.

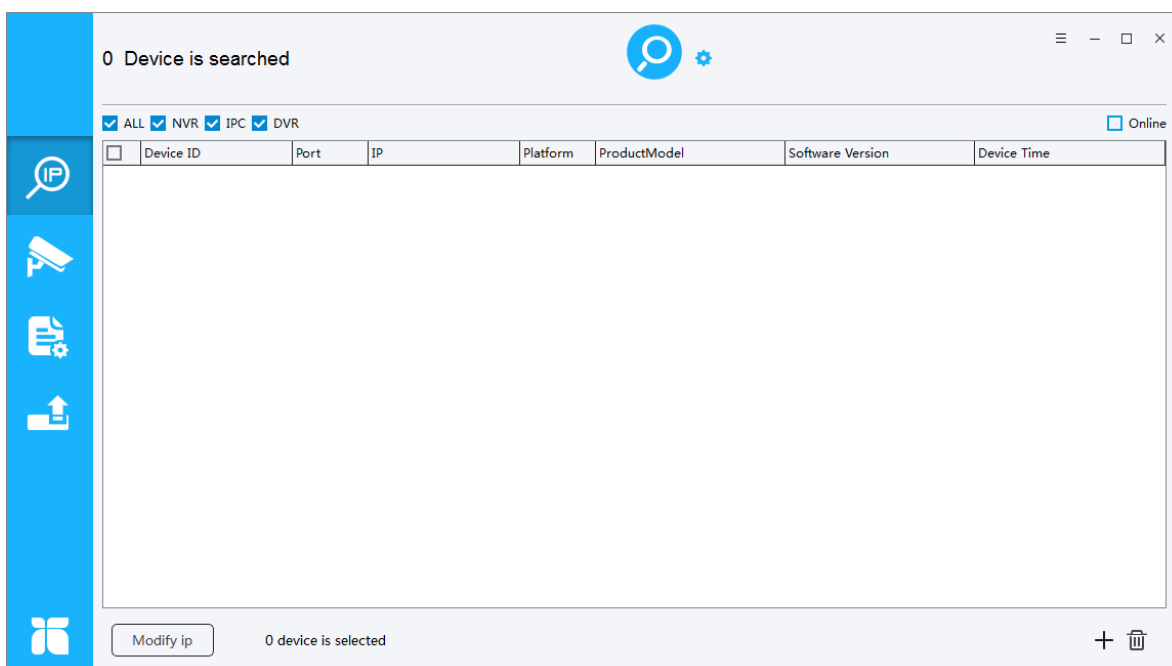


# QUICK START

## 2. Software Interface



Software interface shown below will appear.

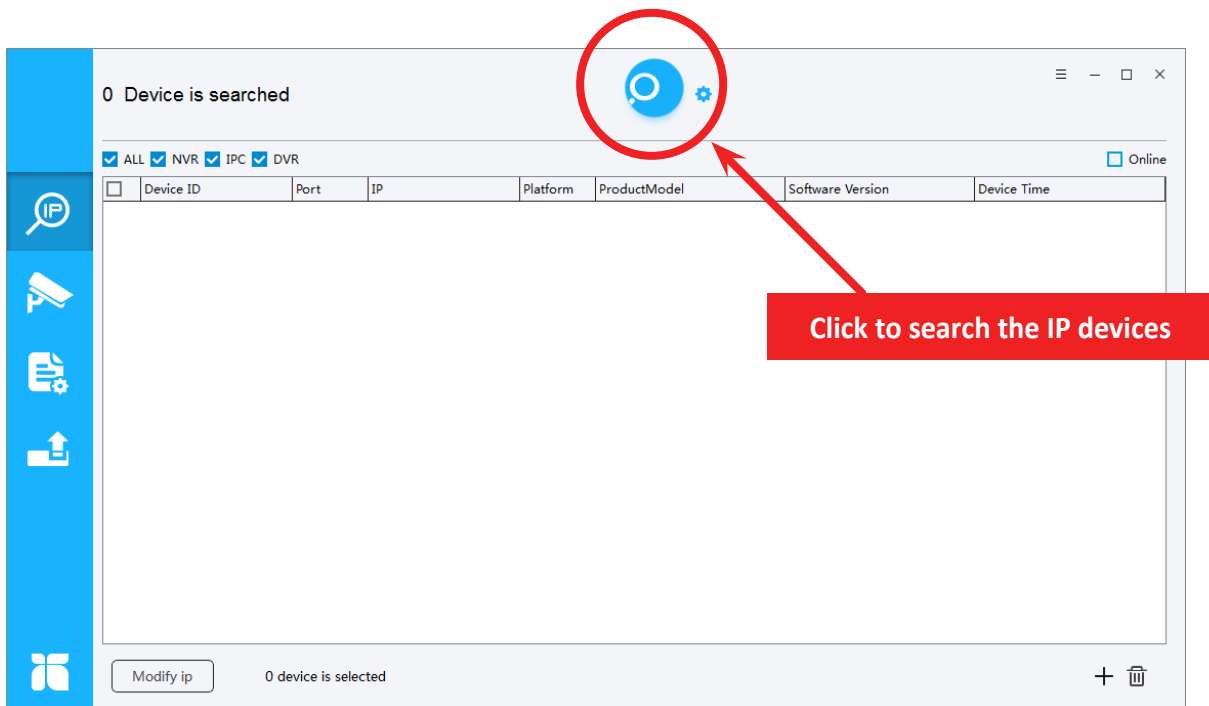


# IP SEARCH TOOL

## 3. Start



Click “Start” button to automatically search the IP devices on the network, as shown below.



It will search for IP devices on the same network, and show the “Device ID”, “IP Address” ,”Product Model” and “Software Version”

You can click “Stop” to stop the search when you find device/devices that you want.

Click “Clear All” to clear the search result.

# QUICK START

## 4. Change IP address of IP encoder

To change the IP address of the desired IP device, select the device from the list and then click "Modify IP". You can also change the other network parameters by doing the same.

5 Devices are searched

Device ID	Port	IP	Platform	ProductModel	Software Version	Device Time
09CA1	30001	192.168.0.99	0701	iPVMZ	v3.3.0701.1002.147.0.70.0.11	
10CA2	30001	192.168.0.223	0804	iPVMZ	v3.5.0804.1003.147.0.27.13.12	
10CA1	30001	192.168.0.224	0804	iPVMZ	v3.5.0804.1003.147.0.27.13.12	
113B4	30001	192.168.255.229	0701	iPVMZ	v3.3.0701.1002.147.0.70.1.20	
	30001	192.168.0.222	0804	IPR58/21BYDN/J/B6.0/23	t3.6.0804.4000.3.0.5.5.0	2019-10-02 13:49:46

1. Check the box to select the device  
2. Click 'Modify IP' button

Modify ip 1 device is selected

Modify IP

Mode: ☒ Static ☐ DHCP

Begin IP: . . .

☐ Set all the selected devices to this IP

Subnet mask: . . .

Gateway: . . .

select the number of devices: 1

Automatic Manual

OK

When click "Modify IP" button, this window will popup. You can choose 'Automatic' or 'Manual' option.

Modify IP

Network: Local Area Connection

IP: 192.168.0.37

Subnet mask: 255 . 255 . 255 . 0

Gateway: 192 . 168 . 0 . 1

select the number of devices: 1

Automatic Manual

OK

The 'Automatic' option will let you have a proper IP address automatically.

Modify IP

Mode: ☒ Static ☐ DHCP

Begin IP: 192 . 168 . 0 . 99

☐ Set all the selected devices to this IP

Subnet mask: 255 . 255 . 255 . 0

Gateway: 192 . 168 . 0 . 1

select the number of devices: 1

Automatic Manual

OK

The 'Manual' option let you type the IP address / subnet mask / gateway.

# IP SEARCH TOOL

## 5. Complete



Once the changes have take place, the message shown below will be prompted to confirm the change.

