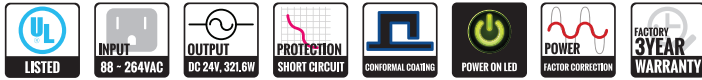




VZ-DC24-320 FEATURES & HIGHLIGHTS

- AC Input - 88 ~ 264V AC (124 ~ 370V DC), 47 ~ 63Hz
- DC Output - 24V DC / 320 W
- Built-in Active PFC function, Power Factor > 0.95
- A Low Profile Enclosed Power Supply with PFC Function
- Over Voltage / Overload / Over current / Short-Circuit Protection
- 30mm Low Profile Design for 1U Installation
- Conformal Coating and Green LED per Output
- UL/US listed

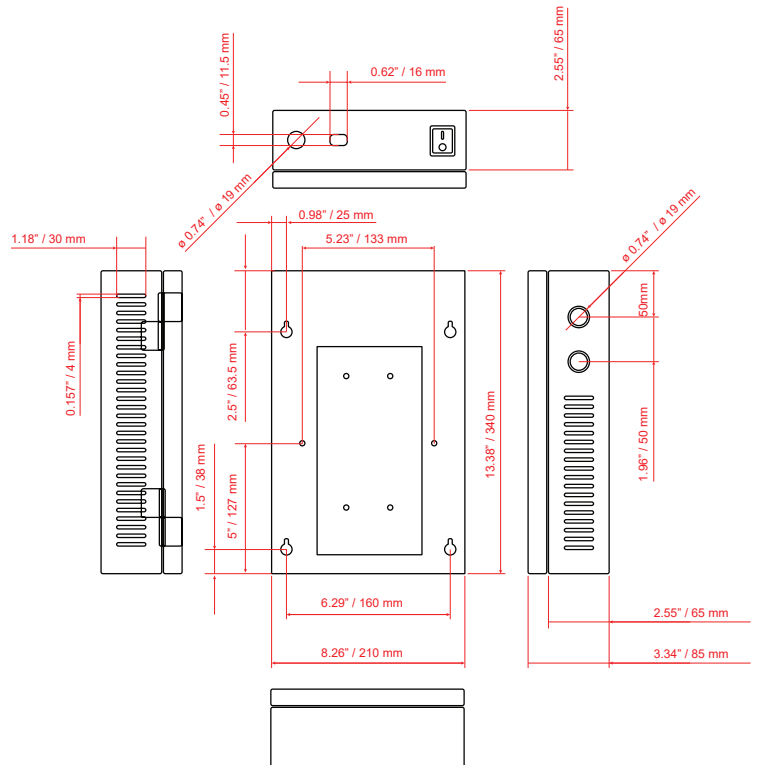


Designed specifically for ViewZ public view monitor model:



MODEL #	VZ-DC24-320
FEATURES	
Input Voltage	88 ~ 264V AC / 124 ~ 370V DC, 47 ~ 63 Hz
Output Voltage	DC 24V / 321.6 W
Output Voltage Adjustment Range	20 ~ 26.4V
Total Output Current / Range	13.4 A / 0 ~ 13.4A
PROTECTION	
Overload	105 ~ 135% rated output power
Type	Hiccup mode, recovers automatically after fault condition is removed
Over voltage	27.6 ~ 32.4V
Type	Shut down o/p voltage, Power Recovery
Over temperature	Shut down o/p voltage, Recovers automatically after temperature goes down
DIMENSIONS & WEIGHT	
Net Dimensions (Width x Height x Length)	8.26" x 13.38" x 3.34" / 210 x 340 x 85 mm
Gross Dimensions	11.75" x 17.5" x 7" / 298.45 x 444.5 x 177.8 mm
Net Weight / Gross Weight	8.2 lbs (3.7 kg) / 9.7 lbs (4.4 kg)
GENERAL	
Regulations	SAFETY STANDARDS: UL/CUL
Operating Humidity	20 ~ 90% RH. Non-condensing
Storage Humidity	10 ~ 95% RH. Non-condensing
Operating Temperature	-22°F ~ 158°F / -30°C ~ +70°C
Storage Temperature	-40°F ~ 185°F / -40°C ~ +85°C
Temperature Coefficient	±0.03%/°C (0°C ~ 50°C)
Vibration	10 ~ 500Hz, 2G 10min./1cycle, 60min. each along X, Y, Z axes
MTBF.	206.5K hrs min. MIL-HDBK-217F (25°C)

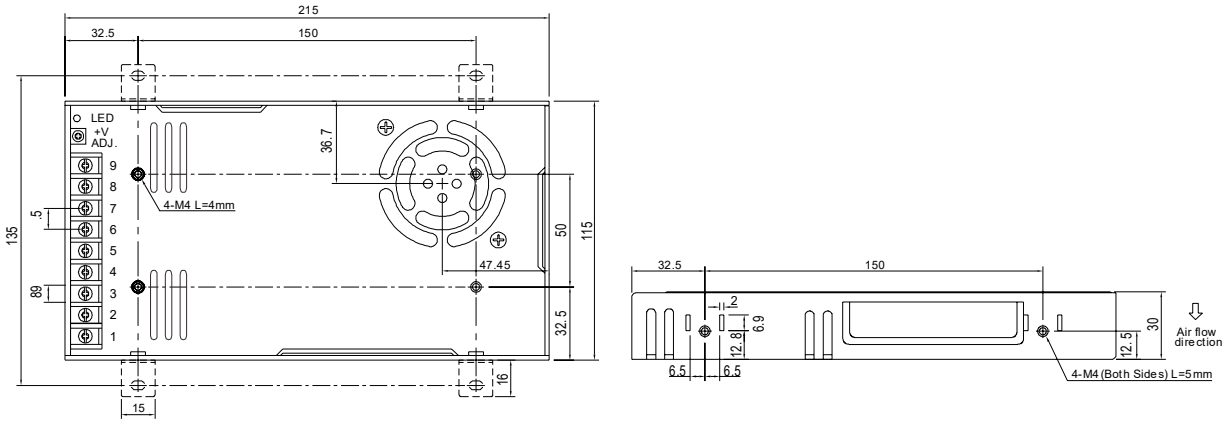
DIMENSIONS



Contact ViewZ

- Address : 177 W. Orangethorpe Ave., Placentia, CA 92870
- Phone : (714) 996-1177, Fax : (714) 996-1138
- Sales : sales@viewzusa.com
- Specification subject to change without notice.

MECHANICAL SPECIFICATION



RECOMMENDED OPERATION DISTANCE

**18AWG is highly recommended to ensure operation distance as shown in the charts*

23" HD-PVMN & IP-PVMN - 3 MONITORS - VZ-PVM-Z2B3N, Z2W3N, I2B3N & I2W3N									
Cable Type - 18AWG (Current : 12~19 A)	1 Set of HD-PVMN / IP-PVMN			2 Set of HD-PVMN / IP-PVMN			3 Set of HD-PVMN / IP-PVMN		
ft / meter	DC 24V	DC 27V	Max. V	DC 24V	DC 27V	Max. V	DC 24V	DC 27V	Max. V
100 ft / 30.48 m	tested	tested	tested	tested	tested	tested	tested	tested	tested
150 ft / 45.72 m	tested	tested	tested	tested	tested	tested	tested	tested	tested
200 ft / 60.96 m	tested	tested	tested	tested	tested	tested	tested	tested	tested
250 ft / 76.20 m	tested	tested	tested	tested	tested	tested	tested	tested	tested
300 ft / 91.44 m		tested	tested		tested	tested		tested	tested
350 ft / 106.68 m			tested			tested			tested

Input : Power Source output terminal
Output : Set input terminal

27" HD-PVMN & IP-PVMN - 3 MONITORS - VZ-PVM-Z3B3N, Z3W3N, I3B3N & I3W3N									
Cable Type - 18AWG (Current : 12~19 A)	1 Set of HD-PVMN / IP-PVMN			2 Set of HD-PVMN / IP-PVMN			3 Set of HD-PVMN / IP-PVMN		
ft / meter	DC 24V	DC 27V	Max. V	DC 24V	DC 27V	Max. V	DC 24V	DC 27V	Max. V
100 ft / 30.48 m	tested	tested	tested	tested	tested	tested	tested	tested	tested
150 ft / 45.72 m	tested	tested	tested	tested	tested	tested	tested	tested	tested
200 ft / 60.96 m	tested	tested	tested	tested	tested	tested	tested	tested	tested
250 ft / 76.20 m		tested	tested		tested	tested		tested	tested
300 ft / 91.44 m				Not Recommended					
350 ft / 106.68 m				Not Recommended					

32" HD-PVMN & IP-PVMN - 3 MONITORS - VZ-PVM-Z4B3N, Z4W3N, I4B3N & I4W3N									
Cable Type - 18AWG (Current : 12~19 A)	1 Set of HD-PVMN / IP-PVMN			2 Set of HD-PVMN / IP-PVMN			3 Set of HD-PVMN / IP-PVMN		
ft / meter	DC 24V	DC 27V	Max. V	DC 24V	DC 27V	Max. V	DC 24V	DC 27V	Max. V
100 ft / 30.48 m	tested	tested	tested	tested	tested	tested	tested	tested	tested
150 ft / 45.72 m	tested	tested	tested	tested	tested	tested	tested	tested	tested
200 ft / 60.96 m		tested	tested		tested	tested		tested	tested
250 ft / 76.20 m				Not Recommended					
300 ft / 91.44 m				Not Recommended					
350 ft / 106.68 m				Not Recommended					

PRECAUTIONS

- Installation and service should be performed only by qualified service personnel and should conform to all local codes.
- To reduce the risk of electric shock or fire, do not expose this equipment to rain or moisture.
- Always connect ground first and remove last
- This equipment shall be installed in a manner which prevents unintentional operation by employees, cleaning crew, or others working in the premises.
- To prevent faulty operation, ensure that all wiring is routed and secured to prevent accidental open or short-circuit conditions.
- This equipment is not intended for use within the patient care areas of a health care facility.

Contact ViewZ

- Address : 177 W. Orangethorpe Ave., Placentia, CA 92870
- Phone : (714) 996-1177, Fax : (714) 996-1138
- Sales : sales@viewzusa.com
- Specification subject to change without notice.