

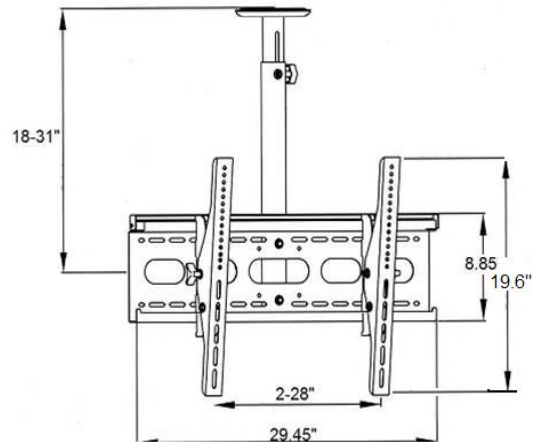


1220 N. Kraemer Blvd
Anaheim CA 92806
TEL: 714 630-3380

MODEL CMK-10

CEILING MOUNT FOR ViewZ

32RTC/32PVM/42RTH and 40/46/52 NL SERIES DISPLAYS SPECIFICATIONS



PRODUCT FEATURES

- FOR VESA AND NON-VESA DISPLAYS FOR MAXIMUM FLEXIBILITY
- FOR LARGE DISPLAYS 42-55" TO 165lbs-VESA TO 600x400mm
- ADJUSTABLE LENGTH COLUMN FROM 20-40" INCLUDED
- TILT ADJUSTMENT TO 15 degrees
- STRUCTURAL CEILING MOUNT PLATE INCLUDED
- HARDWARE FOR WOOD/MASONRY CEILINGS INCLUDED
- RUGGED BLACK POWDER COAT FINISH

CTN WGT 20Lb
CTN DIM 30.5"x10"x7"

INCLUDED WITHIN KIT

- UNIVERSAL FLAT PANEL ADAPTOR PLATE
- STRUCTURAL CEILING MOUNT PLATE
- ADJUSTABLE LENGTH COLUMN
- HARDWARE BAG FOR WOOD/MASONRY INSTALL
- INSTALLATION GUIDE

ARCHITECTURAL SPECIFICATIONS

The Flat Panel Ceiling Mount shall be ViewZ Model CMK-10 with adjustable pole. It shall be UL listed and include the ceiling plate. It shall be installed at all locations as listed per plans. Assembly and install shall be done according to the Manufacturer's install guide by a professional installer with proper assistance.

Specifications subject to change without notice.